

HUMPHREY BUTLER

Agents & Dealers in Fine Jewellery



2020 - 2021

2020 - 2021

HUMPHREY BUTLER

Agents & Dealers in Fine Jewellery



HUMPHREY BUTLER LTD

40/41 PALL MALL, LONDON SW1Y 5JG
TELEPHONE +44 (0)20 7839 3193 FAX +44 (0)20 7930 5943

HUMPHREY@HUMPHREYBUTLER.COM
WWW.HUMPHREYBUTLER.COM



F

AR BE IT FROM US TO INVOKE SUPERTRAMP'S "CRISIS, WHAT CRISIS?" when Covid has cast a long shadow over 2020 but we hope you won't think it frivolous of us in producing our twentieth annual brochure in order to raise morale and lift the pall of gloom that our leaders seem keen to perpetuate.

With London devoid of traffic both human and motorised, global travel a thing of the past and trade fairs being cancelled on a monthly basis, trading conditions have not been ideal but we have endeavoured as always to put together a collection to pander to all tastes and pockets. As we have been confined to barracks for so much of the past few months our brochure has a distinct domestic theme with our jewellery being photographed on some gorgeous fabrics, as recommended by Davina Butler, devoted wife, decorating supremo and style guru.



Leading the charge this year is a fabulous 11.53ct old European diamond that we managed to buy privately in September. It's not often that our monthly budget is blown in one easy move but this particular beauty had Humphrey smitten at first sight. The Chancellor's dismal forecasts were cast aside and a handsome cheque was written. Now all we need is a buyer – and we promise the impact this stone will make on a finger will be enough to make anyone's trousers fall down.

As formidable back-up on the diamond front we have two different tiaras, three other fabulous necklaces and two pairs of knockout chandelier earrings, not to mention an alluring 4.18ct yellow diamond in an understated gold mount that will rival any good sunrise. In similar style we hope your eye will be drawn to the gorgeous 3.01ct old emerald, also remounted in yellow

gold, which just jumps off page 43. Both go to prove that old stones really can be brought back to life when given a contemporary makeover. Elsewhere on the coloured stone front the ruby in the centre of the diamond cluster ring on p11 is a little gem, the sapphires in the Holbeinesque pendant are lovely and it is rare to find a matching pair of drop-shaped emeralds of the size and liveliness of those seen in the earrings on p15.

Clients are always asking after pieces by known makers, particularly those French workshops that made Paris the Mecca of the jewellery world throughout the first half of the 20th century. This year Cartier are responsible for two of our highlights. Dating from 1931, the black onyx and diamond festoon necklace on p25, is stunningly simple in design, but exudes the Art Deco spirit of Thoroughly Modern Millie, while the ruby and diamond pendant on p35, suspended from its delicate seed pearl sautoir, represents the very best of their Belle Epoque period. However, if you prefer your jewellery to shout rather than whisper, the 1950s carved ruby bib necklace by Marchak on p32 is a proper scene stealer, a glorious piece of work from a maker who embodies over 100 years of Franco-Russian collaboration.

Big tickets aside, there is plenty to consider for a smaller budget, from the Georgian, Victorian and Edwardian periods to the more contemporary. There are game birds and lizards, sailing boats and snake rings, cigarette cases and pill boxes, hearts and wings, not to mention the usual range of cufflinks and stickpins for husbands, brothers and godsons. We hope you enjoy it as jewellery is meant to be fun – and we need all the fun we can get in these difficult times.



COVER

1. Victorian pearl and diamond wing, heart and bow brooch, mounted in silver and gold

PREVIOUS PAGE

2. Victorian ruby and diamond acorn stickpin, mounted in silver and gold

THIS PAGE

3. Sapphire, green garnet and diamond pavé-set butterfly brooch with ruby eye, mounted in gold



“ In order
to be irreplaceable,
one must always
be different. ”

— COCO CHANEL

THIS PAGE

4. Antique diamond
ogee and Greek key
pattern tiara, mounted
in silver and gold





OPPOSITE PAGE

5. Pair of fine antique diamond ear-pendants, the pear-shaped diamonds weighing 1.78ct and 1.42ct, D and E colour respectively, type IIa



THIS PAGE

6. Diamond cluster ring, the central brilliant-cut diamond weighing 3.14cts, F colour, SI1 clarity

7. Art Deco diamond and sapphire tapering bracelet, set with old mine and single-cut diamonds and French-cut sapphires

8. Sapphire and diamond boat-shaped ring, the oval sapphire weighing approx. 2.00cts, mounted in platinum





THIS PAGE

9. Pair of Art Deco calibré ruby and diamond earclips forming a double clip brooch

10. Art Deco diamond openwork panel bracelet, mounted in platinum, French

11. Edwardian Burmese ruby and diamond cluster ring, the ruby weighing approx. 1.00ct, mounted in platinum

OPPOSITE PAGE

12. Burmese ruby and diamond cluster ring, the ruby weighing 2.18cts, mounted in gold





OPPOSITE PAGE

13. Pair of Art Deco pavé-set diamond geometric disc earclips, mounted in platinum

THIS PAGE

14. Art Deco aquamarine and diamond ring, the rectangular aquamarine weighing approx. 7.5Octs, mounted in platinum

15. Belle Epoque old mine-cut diamond three-row line bracelet, mounted in platinum

16. Georgian diamond heart pendant, mounted in silver and gold



THIS PAGE

17. Edwardian emerald and diamond openwork octafoil pendant, mounted in silver and gold

18. Art Deco emerald and diamond rectangular panel ring, mounted in platinum

19. Emerald and diamond three-stone ring, the cushion-shaped emerald weighing 1.45ct, mounted in 18ct gold



OPPOSITE PAGE

20. Pair of Colombian emerald and diamond drop ear-pendants, the emeralds weighing approx. 17.00cts in total, mounted in platinum



OPPOSITE PAGE

21. Late 19th century diamond floral garland necklace, mounted in silver and gold

THIS PAGE

22. Art Deco emerald and diamond panel ring, the octagonal emerald weighing approx. 1.60ct, mounted in platinum

23. Victorian emerald and diamond heart brooch/pendant with memorial locket to the reverse, mounted in silver and gold

24. Pair of antique peridot and diamond quatrefoil cluster earrings, mounted in silver and gold



THIS PAGE

25. Pair of antique diamond graduated chain ear-pendants, mounted in silver and gold

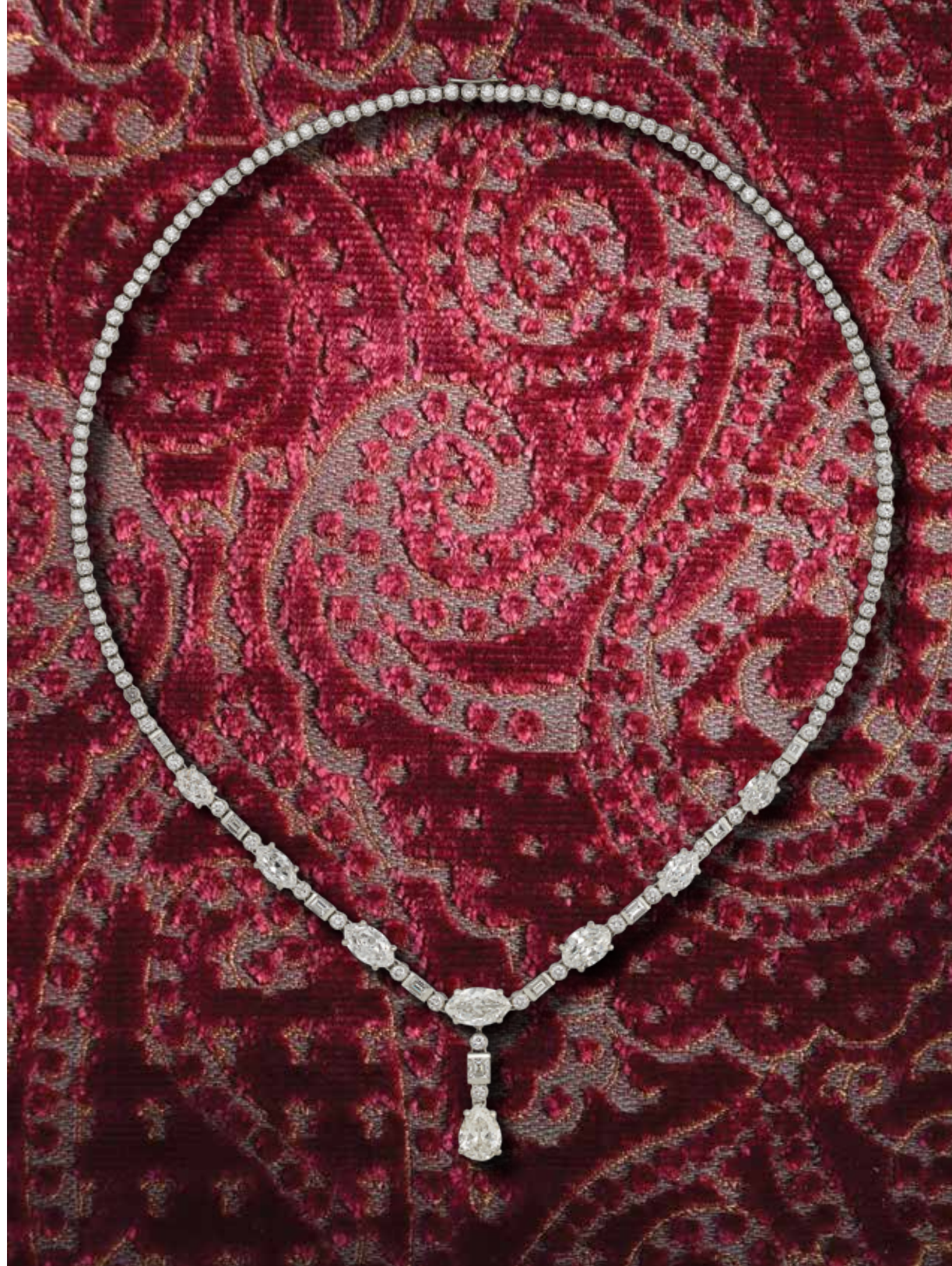
26. Diamond single-stone ring, the Asscher-cut diamond weighing 2.12cts, E colour, VS2 clarity, mounted in platinum

27. Pair of diamond single-stone earstuds, the brilliant-cut diamonds weighing approx. 0.60ct each, mounted in 18ct white gold

28. Art Deco diamond four leaf clover pendant by Cartier, mounted in platinum

OPPOSITE PAGE

29. Navette, brilliant and baguette-cut diamond line necklace, with pear-shaped diamond drop





OPPOSITE PAGE
& TOP PAGE
30. *Antique diamond
fringe necklace
forming tiara, mounted
in silver and gold,
in fitted case
by Garrard & Co.*

THIS PAGE
31. *Pair of cushion-
shaped diamond
ear-pendants, the larger
diamonds weighing
approx. 2.00cts each*



THIS PAGE

32. Pair of brilliant and baguette-cut diamond chandelier ear-pendants with florette terminals

33. Edwardian enamel and diamond snowflake brooch/pendant, mounted in gold

34. Pair of brilliant and baguette-cut diamond circular cluster earclips, mounted in platinum

OPPOSITE PAGE

35. Victorian diamond cluster and swag necklace, mounted in silver and gold, in fitted case by Harvey & Gore





OPPOSITE PAGE

36. Antique old mine-cut diamond foliate chandelier earrings, mounted in silver and gold

THIS PAGE

37. Fine Art Deco black onyx bead and diamond necklace by Cartier London, 1931



THIS PAGE

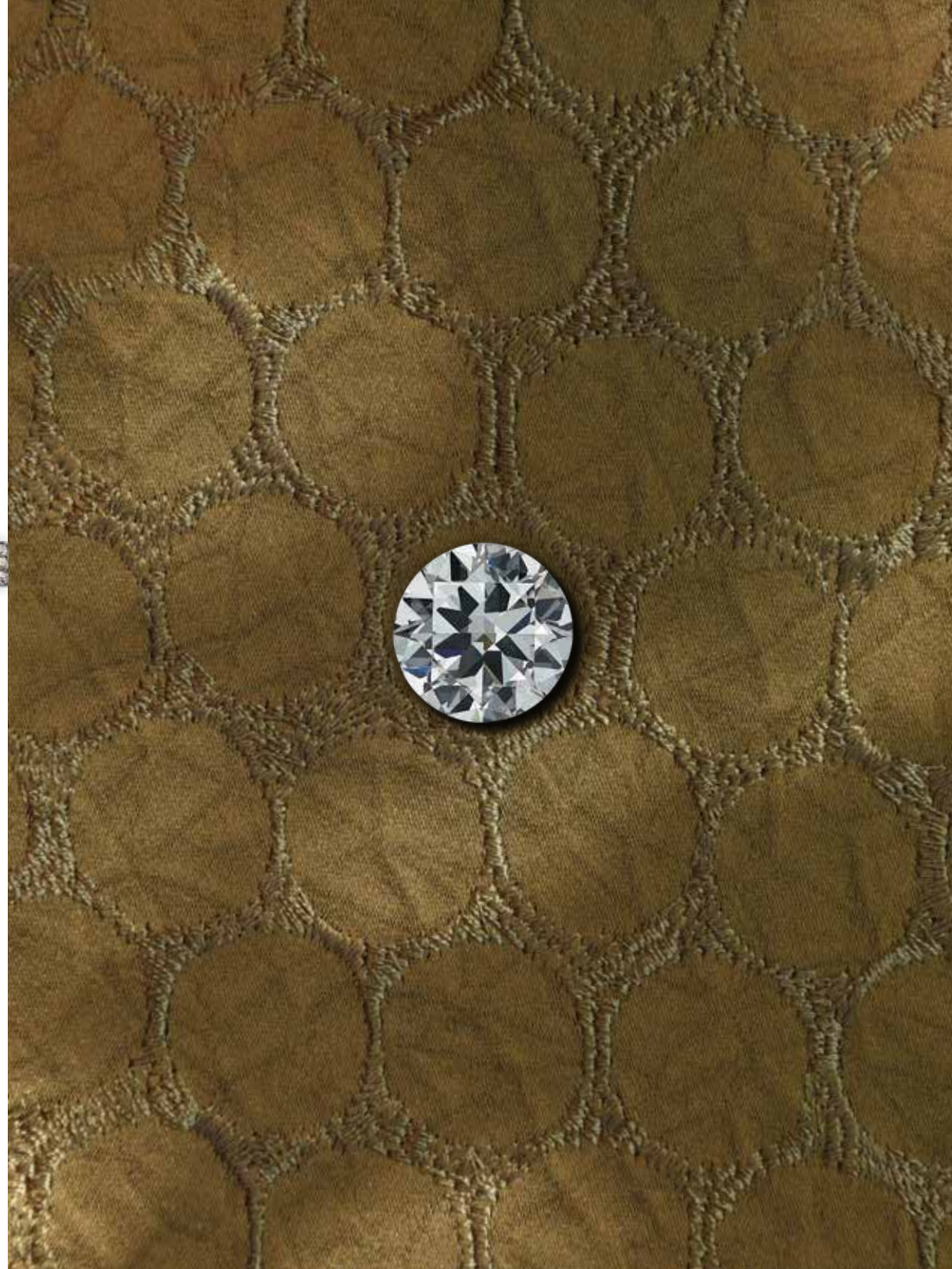
38. Art Deco diamond boutonniere brooch by Cartier, with spring fitting for flowers, mounted in platinum

39. Antique flower-head and open rectangular link diamond bracelet, mounted in silver and gold

40. Pair of antique diamond openwork circular cluster earrings, mounted in silver and gold

OPPOSITE PAGE

41. Diamond single-stone ring, the old European-cut diamond weighing 11.53cts, I colour, SI1 clarity





OPPOSITE PAGE

42. Late 19th Century pearl and diamond festoon necklace, mounted in silver and gold, in fitted case by Carrington & Co

THIS PAGE

43. Belle Epoque diamond and natural pearl bracelet, mounted in platinum

44. Victorian diamond and enamel yacht brooch, mounted in silver and gold

45. Pair of antique pearl and diamond circular cluster earrings, mounted in silver and gold



THIS PAGE

46. Pair of calibre sapphire and diamond target cluster ear-pendants

47. Antique sapphire and seed-pearl lizard brooch with ruby eyes, mounted in silver and gold

48. Cabochon sapphire and diamond cluster ring, the sapphire weighing approx. 2.75cts, mounted in platinum



OPPOSITE PAGE

49. Antique sapphire and diamond Holbeinesque pendant, decorated with red and green enamel, single pearl drop terminal





OPPOSITE PAGE

50. 1950s carved ruby and diamond necklace by Marchak with ruby bead detail, mounted in gold

THIS PAGE

51. Diamond and calibre ruby Royal Yacht Squadron burgee brooch

52. Thai ruby and diamond three-stone ring, the circular-cut ruby weighing 2.41cts

53. Calibre ruby and diamond hunting whip brooch



OPPOSITE PAGE

54. Antique pavé-set diamond ribbon bow brooch with hairpin fitting, mounted in silver and gold

THIS PAGE

55. Fine Belle Epoque ruby, diamond and seed pearl mesh necklace by Cartier Paris, mounted in platinum





OPPOSITE PAGE

56. Amethyst, citrine and diamond abstract bracelet, mounted in yellow gold

THIS PAGE

57. Antique 9ct gold and red and white enamel memorial pendant with crystal locket centre

58. Ruby and diamond flowerhead dress set by Chaumet London, mounted in 18ct gold

59. Rectangular amethyst and diamond cocktail ring, mounted in gold



THIS PAGE

60. French-cut sapphire and diamond articulated bow brooch, mounted in gold and platinum

61. Pair of diamond earstuds, the brilliant-cut diamonds weighing 0.23ct and 0.24ct respectively, mounted in 18ct gold

62. Antique diamond cluster ring of octafoil design, mounted in silver and gold

OPPOSITE PAGE

63. Victorian coloured and white diamond half-hoop bangle, mounted in gold





OPPOSITE PAGE

64. Antique diamond and yellow diamond grapevine brooch, mounted in platinum and 14ct yellow gold



THIS PAGE

65. Antique amethyst and rose-cut diamond circular cluster brooch, mounted in silver and gold

66. Antique oval amethyst rivière necklace, mounted in 12ct gold



THIS PAGE

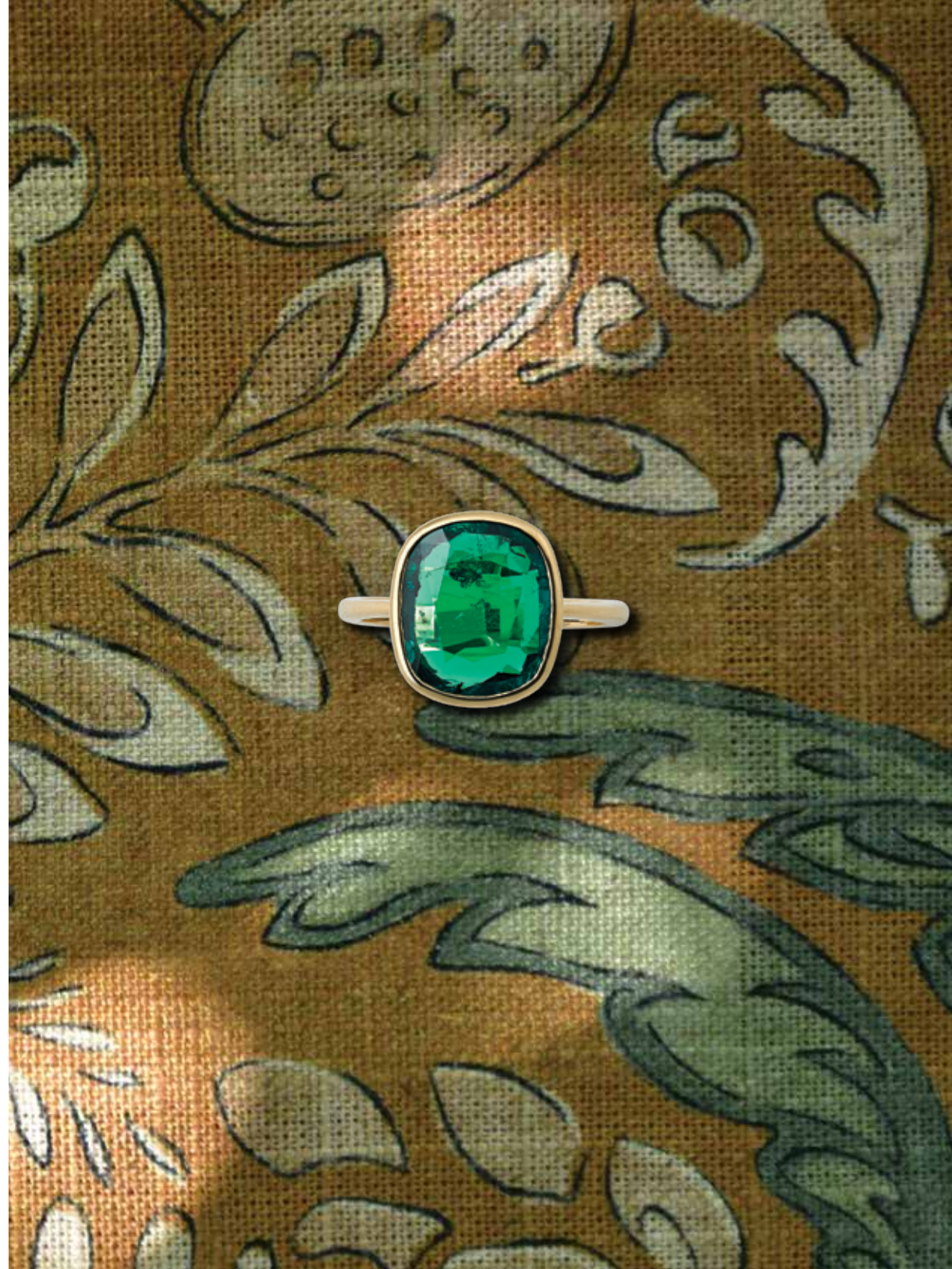
67. Platinum and spectacle-set demantoid garnet and diamond longchain

68. Vari-gem heart fringe necklace by Natalia Josca, mounted in gold

69. 18ct white gold and spectacle-set diamond neckchain

OPPOSITE PAGE

70. Colombian emerald and 18ct gold ring, the cushion-shaped emerald weighing 3.01cts





OPPOSITE PAGE

71. Antique foiled ruby, diamond and black and white enamel heart-shaped ring, mounted in gold



THIS PAGE

72. Yellow diamond single-stone ring, the cushion-shaped diamond weighing 4.18cts, fancy light yellow colour, VS2 clarity, mounted in 22ct gold

73. Antique textured gold and old mine-cut diamond snake ring, with cabochon amethyst eyes

74. Diamond-set tri-coloured 18ct gold 'Trinity' ring by Cartier

75. 18ct gold triple band swivel ring studded with seven brilliant-cut diamonds



THIS PAGE

76. Victorian diamond woodcock stickpin, with ruby eye, mounted in silver and gold

77. Ruby and diamond fruit and leaf stickpin, mounted in silver and gold

78. Victorian cabochon sapphire and rose-cut diamond circular cluster stickpin, mounted in silver and gold

79. Brilliant-cut diamond single-stone stickpin, the diamond weighing 0.48ct, mounted in gold

80. Pear-shaped ruby and white enamel stickpin, the ruby weighing approx. 0.35ct, mounted in gold

OPPOSITE PAGE

81. Pair of Thai ruby and diamond cluster earclips, the cushion-shaped rubies weighing 0.75ct and 0.78ct respectively, mounted in 18ct gold





OPPOSITE PAGE

82. Pair of 19th century 18ct gold archaeological revival amphora earrings

THIS PAGE

83. Pair of 18ct gold Maillon Panthère earrings by Cartier of open brickwork design

84. 1940s 18ct rose gold three-row tank track bracelet

85. Pair of 18ct gold, steel and diamond 'Entrelaces' hoop earrings by Cartier

THIS PAGE

86. Pair of 18ct gold and diamond swirl earclips by Van Cleef & Arpels

OPPOSITE PAGE

87. 18ct gold fluted and ribbed link fringe necklace

88. Antique 18ct two-coloured gold tank track bracelet





OPPOSITE PAGE

89. Pair of diamond and 15ct gold ropework chandelier earrings

THIS PAGE

90. 18ct gold and pavé-set diamond crossover ring

91. Pair of 18ct gold ropework bangle bracelets by Van Cleef & Arpels

92. 18ct gold and circular-cut amethyst cocktail ring



THIS PAGE

93. 18ct gold cable link bracelet

94. 18ct gold snaffle-link necklace with oval identity tag by Tiffany & Co.

95. 18ct gold, cabochon sapphire and diamond gypsy ring



OPPOSITE PAGE

96. 9ct ribbed gold circular perfume box by Cartier





OPPOSITE PAGE

97. Pair of attractive mid-19th century micromosaic ear-pendants, mounted in gold

THIS PAGE

98. Victorian 18ct gold and diamond presentation bracelet spelling the word DONCASTER, 1893, in fitted case



THIS PAGE

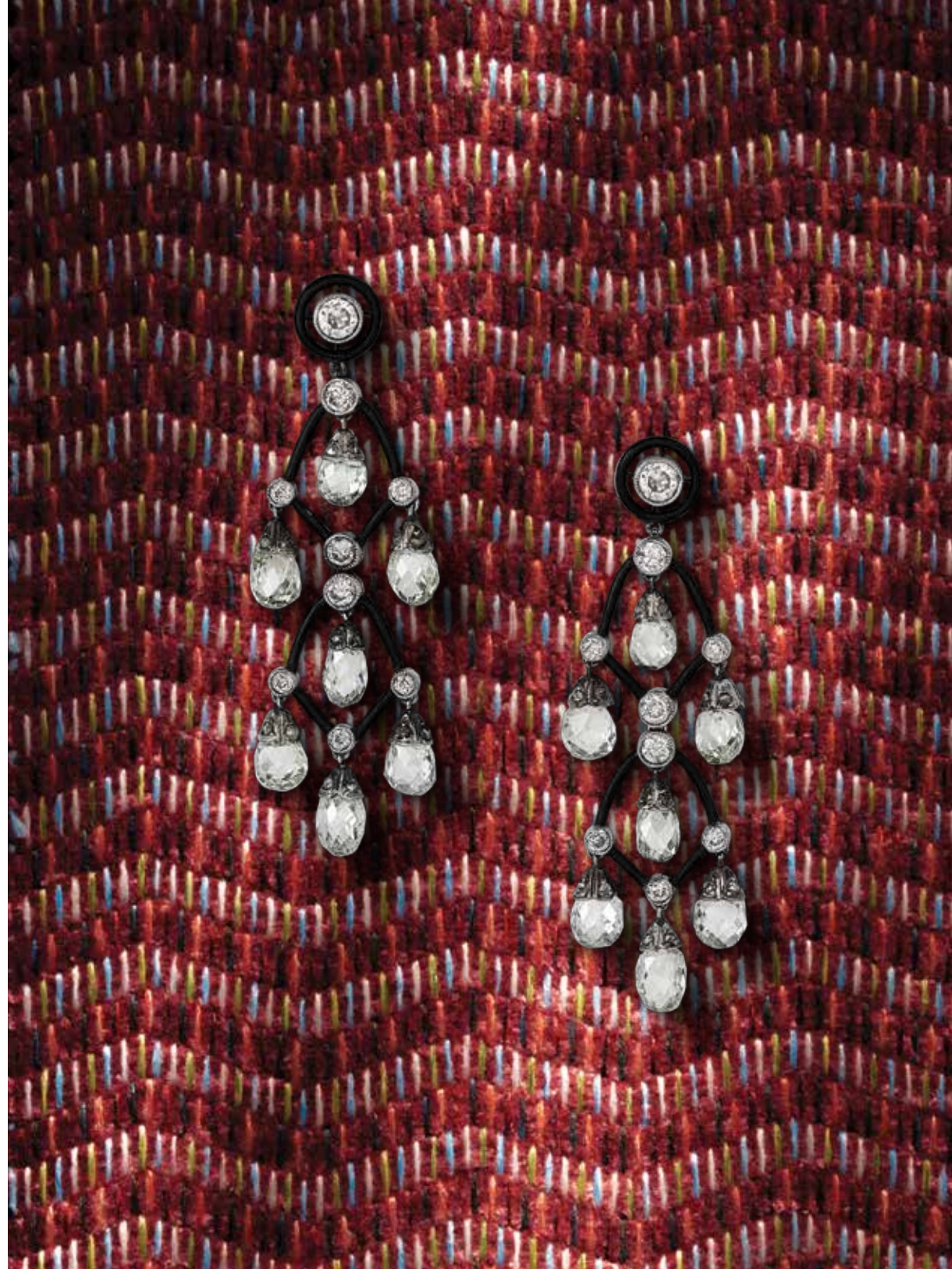
99. Pair of Art Deco black onyx and diamond panel and torpedo cufflinks, mounted in gold

100. Pair of cabochon sapphire, diamond and blue enamel cufflinks, mounted in platinum and 14ct white gold

101. Pair of Art Deco onyx and diamond circular bombé cufflinks, mounted in silver and gold

OPPOSITE PAGE

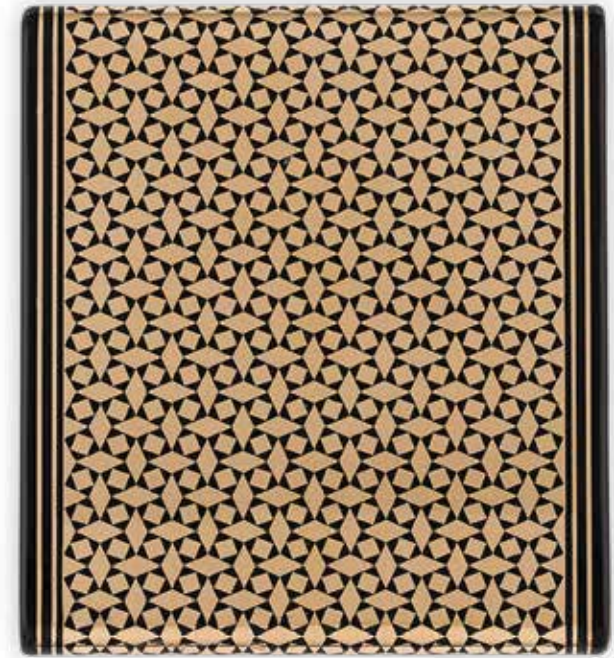
102. Pair of briolette diamond and black enamel articulated cascade ear-pendants





OPPOSITE PAGE

103. Belle Epoque diamond and black enamel baton necklace, mounted in yellow gold



THIS PAGE

104. Art Deco black enamel and 18ct gold cigarette case by Cartier Paris, in fitted case

105. Diamond and blackened platinum ring, the arrowhead diamonds weighing 1.25ct and 1.10ct, I and G colour, VS2 clarity respectively

106. Pair of mother-of-pearl, ruby and enamel target cluster cufflinks, mounted in 9ct gold



THIS PAGE

107. Pair of 14ct yellow gold and sapphire square cufflinks by Tiffany & Co.

108. Pair of 18ct gold and sugarloaf sapphire stirrup cufflinks by Boucheron

109. 18ct gold oval convex cufflinks, each face engraved with the crest of a burning tower

110. Pair of 18ct dimpled gold and diamond circular cufflinks

OPPOSITE PAGE

111. 18ct yellow gold oblong and lozenge shaped link necklace by Cartier





OPPOSITE PAGE

112. Gentleman's yellow gold Calatrava manual wristwatch by Patek Philippe, circa 1950

THIS PAGE

113. Antique 18ct gold owl brooch with sapphire eyes

114. 18ct gold travel clock by Cartier

115. Edwardian gold and diamond hunting horn, whip and horseshoe stockpin



FOR THOSE UNABLE TO TRAVEL TO LONDON,
ALL ITEMS CAN BE SHIPPED SECURELY, EITHER DOMESTICALLY OR ABROAD,
AND FURTHER IMAGES AND DETAILS OF PIECES
CAN BE PROVIDED ON REQUEST

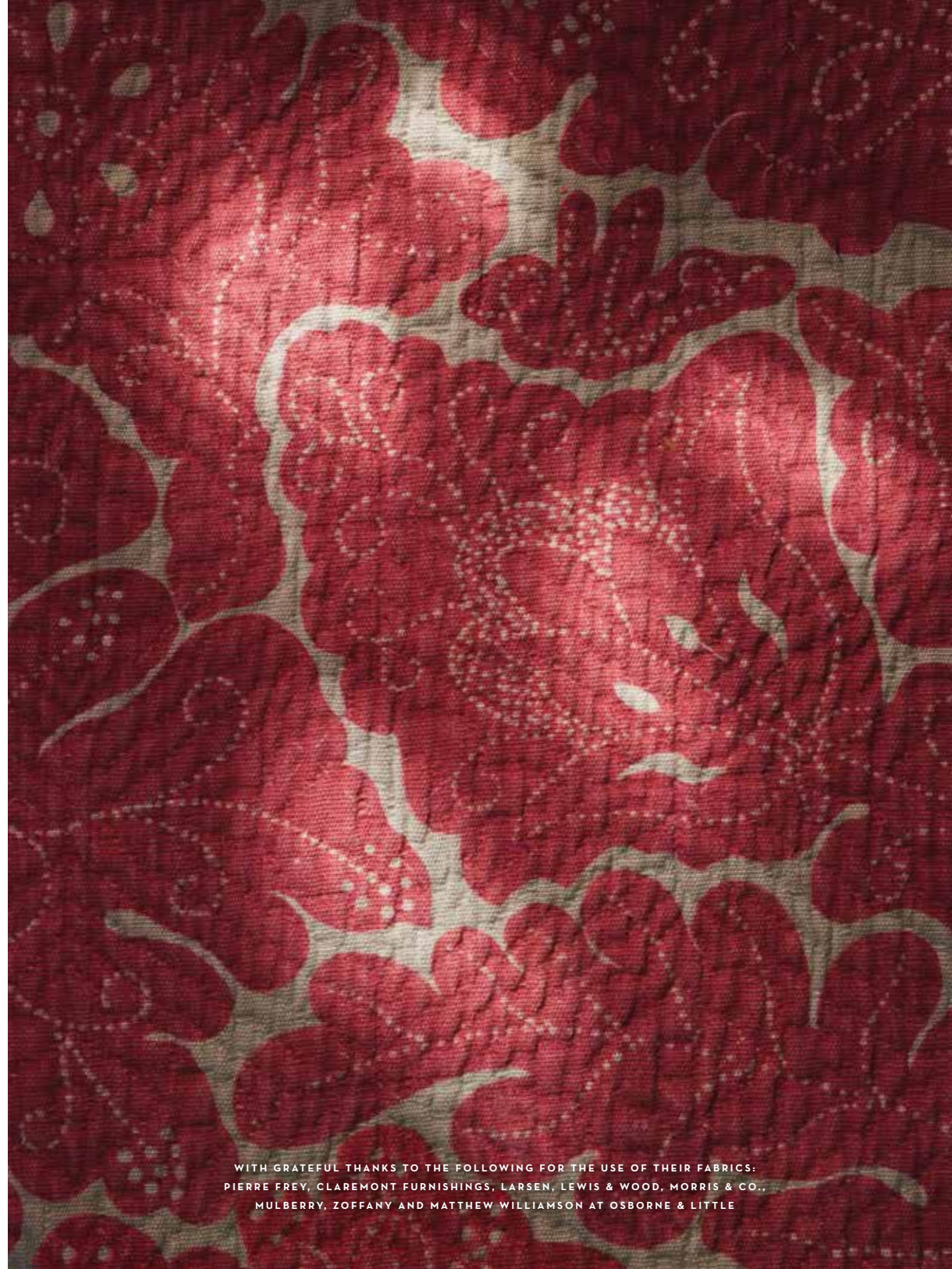
THIS PAGE

116. Gold, ruby
and diamond novelty
ratting bar brooch,
mounted in gold

BACK PAGE

117. Antique diamond
and polychrome enamel
pheasant brooch,
mounted in silver and gold

ART DIRECTION - PRISCILLE NEEFS | BACKGROUND PHOTOS - TOM MANNION & PRISCILLE NEEFS | JEWELLERY PHOTOS - PRUDENCE CUMING



WITH GRATEFUL THANKS TO THE FOLLOWING FOR THE USE OF THEIR FABRICS:
PIERRE FREY, CLAREMONT FURNISHINGS, LARSEN, LEWIS & WOOD, MORRIS & CO.,
MULBERRY, ZOFFANY AND MATTHEW WILLIAMSON AT OSBORNE & LITTLE



WWW.HUMPHREYBUTLER.COM