



HUMPHREY BUTLER

Agents & Dealers in Fine Jewellery

2019 | 2020

2019 | 2020

HUMPHREY BUTLER

Agents & Dealers in Fine Jewellery



HUMPHREY BUTLER LTD

40/41 PALL MALL, LONDON SW1Y 5JG
TELEPHONE +44 (0)20 7839 3193 FAX +44 (0)20 7930 5943

HUMPHREY@HUMPHREYBUTLER.COM
WWW.HUMPHREYBUTLER.COM



AFTER OUR LONDON ARCHITECTURAL FORAY LAST year, we return to the natural world with this brochure, using the Thames as our backdrop. The 'dirty old river' may seem a curious pairing for such an elegant selection of stock, but jewels and rivers have a close history. It was on the banks of the rivers of the Indian plains that the first great diamond deposits were discovered and, for the dealers of the 19th century, the term 'River' denoted diamonds of the very highest grade. No doubt Bruce Springsteen had this in mind when he named his landmark album.

We are thrilled to offer one really eye-popping diamond this year, a showy 6:41ct rectangular stone on page 7 but for those of a less ostentatious outlook, the charming oval on p.4 in a modern mount by our friend William Welstead might appeal. If you, or anyone you know, are gearing up towards a proposal and a splash is needed, look no further.

Sticking with diamonds, should a date at the palace or the party to end all parties be looming, we have illustrated on p.6 one of the most striking tiaras we have been lucky enough to own. (Note to the peerage: buy now. In these turbulent times you never know when the next state opening of Parliament might be sprung on you.) This could be matched with either the pair of old cushion-shaped diamond drops of Liz Taylor proportions on p.17 or the diamond riviére necklace on p.38. It might not match Her Majesty The Queen's but we feel we're heading in the right direction.

PREVIOUS PAGE

1. 1960s gold and gem-set 'Lion ébouriffé' brooch by Van Cleef & Arpels

OPPOSITE PAGE

2. Edwardian gold and diamond hunting horn, horseshoe and whip stickpin

For those of you keener on colour, the square-cut emerald ring on p.29 is utterly gorgeous, the Burma sapphire bracelet on p.46 is an understated beauty while the antique ruby and pink sapphire necklace on p.26 is quite simply show-stopping. For aficionados after a signature from



the top makers, neither the Art Deco brooch & earring set in onyx, diamond and pearl set by Cartier on p.28 nor the Fabergé brooch set with a divine Siberian aquamarine on p.30 will disappoint. Cartier are particularly well represented, with a chic desk clock, a Deco stirrup brooch and stickpin, and an unusual enamel and diamond ivy leaf from the Art Nouveau period.

Given the current mode for diversity and inclusion, gentlemen are not left out. The brochure contains a number of pairs of cufflinks, including a very elegant faceted black onyx and diamond dress-set again from the Deco period, and you will also find an entertaining menagerie of stickpins including an in-house favourite, a lovely model of a standing rabbit. We hope there is a piece here that catches the eye, whatever your budget, but if you are on the hunt for something specific please do get in touch; we are always happy to put our noses to the ground and track down the perfect present.



Equally, if you have anything you are thinking of selling, we would be delighted to help, either with an immediate cash offer or just a word of advice. We have had a number of notable successes on behalf of clients in the last year by offering a prompt and discreet alternative to the increasingly expensive outlet of the salerooms. That said, when we feel auction provides the most competitive market, we will always tell you.

We hope to see you in Pall Mall soon, but in the meantime this comes with our very best wishes for Christmas and the coming year.

“ MODERATION IS A FATAL THING. NOTHING SUCCEEDS LIKE EXCESS ”

– OSCAR WILDE

THIS PAGE

3. *Antique yellow Ceylon sapphire and diamond plaque brooch, the octagonal-cut sapphire weighing 11.32cts, in silver and gold*



4. *Oval-cut diamond ring, the diamond weighing 2.04cts, H colour, VS1 clarity*



5. *Brilliant-cut diamond full eternity ring, size O*



OPPOSITE PAGE

6. *Edwardian green tourmaline and diamond pendant brooch, the tourmalines weighing approx. 17.00 and 6.00cts, in fitted case by Collingwood*





OPPOSITE PAGE

7. Antique diamond collet and drop tiara forming fringe necklace, in silver and gold

THIS PAGE

8. Pair of diamond openwork scallop and shield chandelier ear-pendants

9. Emerald-cut diamond single-stone ring, the diamond weighing 6.41cts, J colour, VS2 clarity



THIS PAGE

- 10. Pair of diamond stylised flame earrings
- 11. Art Deco diamond openwork lozenge ring
- 12. Antique diamond shield-shaped bombé ring, in silver, French



OPPOSITE PAGE

- 13. Oval-cut sapphire and baguette and triangular-cut diamond graduated fringe necklace
- 14. Burmese sapphire and diamond daisy cluster ring, the cushion-shaped sapphire weighing 2.79cts





OPPOSITE PAGE

15. Art Deco diamond openwork buckle and panel bracelet, numbered

THIS PAGE

16. Pair of slightly baroque cultured pearl and diamond earrings
17. Diamond three-stone half-hoop ring, the central brilliant-cut diamond weighing 1.53ct, J colour, SI2 clarity
18. Briolette-cut diamond single-stone pendant, the diamond drop weighing 1.53ct
19. Diamond openwork ribbon bow brooch, in white gold



THIS PAGE

20. *Pair of sapphire and diamond cornucopia earclips*

21. *Brilliant-cut diamond line bracelet, in 18ct gold*

22. *Sapphire and diamond three-stone ring, the cushion-shaped sapphire weighing 1.97ct*

OPPOSITE PAGE

23. *Rock crystal and diamond bound heart pendant set with a central cushion-shaped sapphire weighing 15.35cts, by JAR*





OPPOSITE PAGE

24. *Antique diamond graduated leaf, scroll and collet tiara/necklace, in silver and gold*

THIS PAGE

25. *Pair of antique natural pearl and diamond ear-pendants, in fitted case stamped Collingwood*



THIS PAGE

26. Diamond three-stone ring, the old mine-cut diamonds weighing 1.47ct, 2.70cts and 1.65ct, in platinum

27. Cultured pearl four-row choker necklace with diamond bombé cluster target clasp, in silver and gold

28. Natural pearl and diamond cluster ring, the pearl measuring 9.50mm in diameter, in silver and gold

OPPOSITE PAGE

29. Pair of diamond single-stone ear-pendants, the two cushion-shaped diamonds weighing 5.10cts and 4.92cts, each M colour, VS1 clarity, in silver and gold





OPPOSITE PAGE

30. Diamond twin clip leaf spray devant-corsage, in platinum and 18ct gold, French

THIS PAGE

31. Pair of diamond leaf spray and ribbon earclips

32. Diamond and 18ct white gold spectacle-set chain by Adler

33. Brilliant and baguette-cut diamond ballerina cluster ring, the central diamond weighing 1.92ct



THIS PAGE

34. Art Deco diamond square cocktail ring, the old mine-cut diamond weighing 3.56cts

35. Brilliant-cut diamond rivière necklace, in 18ct white gold

36. Pair of diamond and 14ct white gold fan earclips, French



OPPOSITE PAGE

37. Diamond stylised scroll bangle, the central section detaching to form a pair of clips, French





OPPOSITE PAGE

38. Pair of drop-shaped diamond ear-pendants, the pear-shaped diamonds weighing 1.53ct and 1.54ct, F colour, SI clarity

39. Antique diamond scalloped openwork oval link necklace, in silver and gold

THIS PAGE

40. Antique pavé-set diamond circular cluster pendant, in silver and gold, in fitted case

41. Pair of diamond bombé boule earrings, in platinum and 18ct gold

42. Impressive cushion-shaped kunzite and diamond cocktail ring, the kunzite weighing 133.36cts





THIS PAGE

43. Early 20th century diamond and calibré ruby basket-of-flowers brooch

44. Diamond cornucopia brooch with stylised floral detail

45. Art Deco ruby and old mine-cut diamond elliptical panel bracelet, 1922



OPPOSITE PAGE

46. Edwardian ruby and diamond bow necklace, the pear-shaped old-cut diamond drop weighing approx. 1.25ct





OPPOSITE PAGE

47. Antique Burmese ruby, pink sapphire and diamond collet rivière necklace, in silver and gold

48. Pair of Art Deco ruby and diamond leaf spray earclips by Oesterreicher of Vienna

THIS PAGE

49. Pair of calibre ruby and diamond target cluster ear-pendants

50. Diamond, ruby and enamel Coldstream Guards regimental badge brooch

51. Pair of baroque cultured pearl and diamond earclips



THIS PAGE

52. Pair of Art Deco diamond, black onyx and pearl ear-pendants by Cartier Paris, with brooch en suite, in platinum, numbered, in fitted case

OPPOSITE PAGE

53. Art Deco Colombian emerald and diamond square cluster ring, the step-cut emerald weighing 3.97cts





OPPOSITE PAGE

54. Fine hexagonal aquamarine and rose-cut diamond brooch with bow detail by Fabergé, circa 1900, fitted case

THIS PAGE

55. Rare Art Nouveau plique-à-jour enamel and diamond ivy brooch by Cartier, in silver and gold, French, maker's marks for Charpentier

56. Fine Georgian revival diamond and green guilloché enamel cloak clasp, in silver and gold, in fitted case stamped P arkes of Vigo Street



THIS PAGE

57. Blue zircon and diamond octofoil cluster brooch, the zircon weighing approx. 6.50cts

58. Edwardian textured black ribbon and rose-cut diamond bow brooch

59. Pair of turquoise and diamond leaf spray earstuds

OPPOSITE PAGE

60. Pair of Art Deco aquamarine and diamond stylised wing earclips





OPPOSITE PAGE
 61. Antique black onyx, turquoise and diamond butterfly brooch, gold detail throughout, French



THIS PAGE
 62. Fine Art Deco diamond, natural pearl and onyx stirrup brooch by Cartier Paris, in platinum, French marks, numbered
 63. Lady's Art Deco circular diamond and onyx cocktail watch on black moiré silk band
 64. Lady's Art Deco diamond panel and fan motif cocktail watch by Baume & Mercier, in platinum to a black suede strap, Swiss marks, numbered
 65. Pair of antique diamond chandelier ear-pendants, in silver and gold

“ IF I HAD HER
MONEY, I'D BE RICHER
THAN SHE IS ”
– HOLLY GOLIGHTLY



THIS PAGE

66. Pair of circular-cut citrine and baguette and navette-cut diamond cluster earclips

67. Faceted amethyst and diamond cocktail ring, in 18ct white gold

OPPOSITE PAGE

68. 18ct white gold, diamond and navette-cut citrine bracelet by John Donald, with gold beadwork detail





OPPOSITE PAGE

69. Antique old mine-cut diamond rivière necklace, total weight of the forty-one graduated old mine-cut diamonds approx. 47.00cts, in silver and gold

70. Pair of old mine-cut and pear-shaped diamond tear-drop ear-pendants, in silver and gold



THIS PAGE

71. Antique old mine-cut diamond flower brooch, the central diamond weighing 1.23ct, in silver and gold

72. Georgian diamond cluster ring with fleur-de-lys shoulders, in silver and gold

73. Pair of cultured pearl and diamond cinquefoil flowerhead earclips, the pearls measuring 13.0mm and 14.0mm in diameter, in gold





THIS PAGE

74. Antique natural pearl and diamond bangle, the pearl measuring 6.2mm in diameter, in silver and gold

75. Antique old mine-cut diamond and gold graduated carved half-hoop bangle

76. Rose-cut diamond and cabochon ruby snake ring, in silver and gold

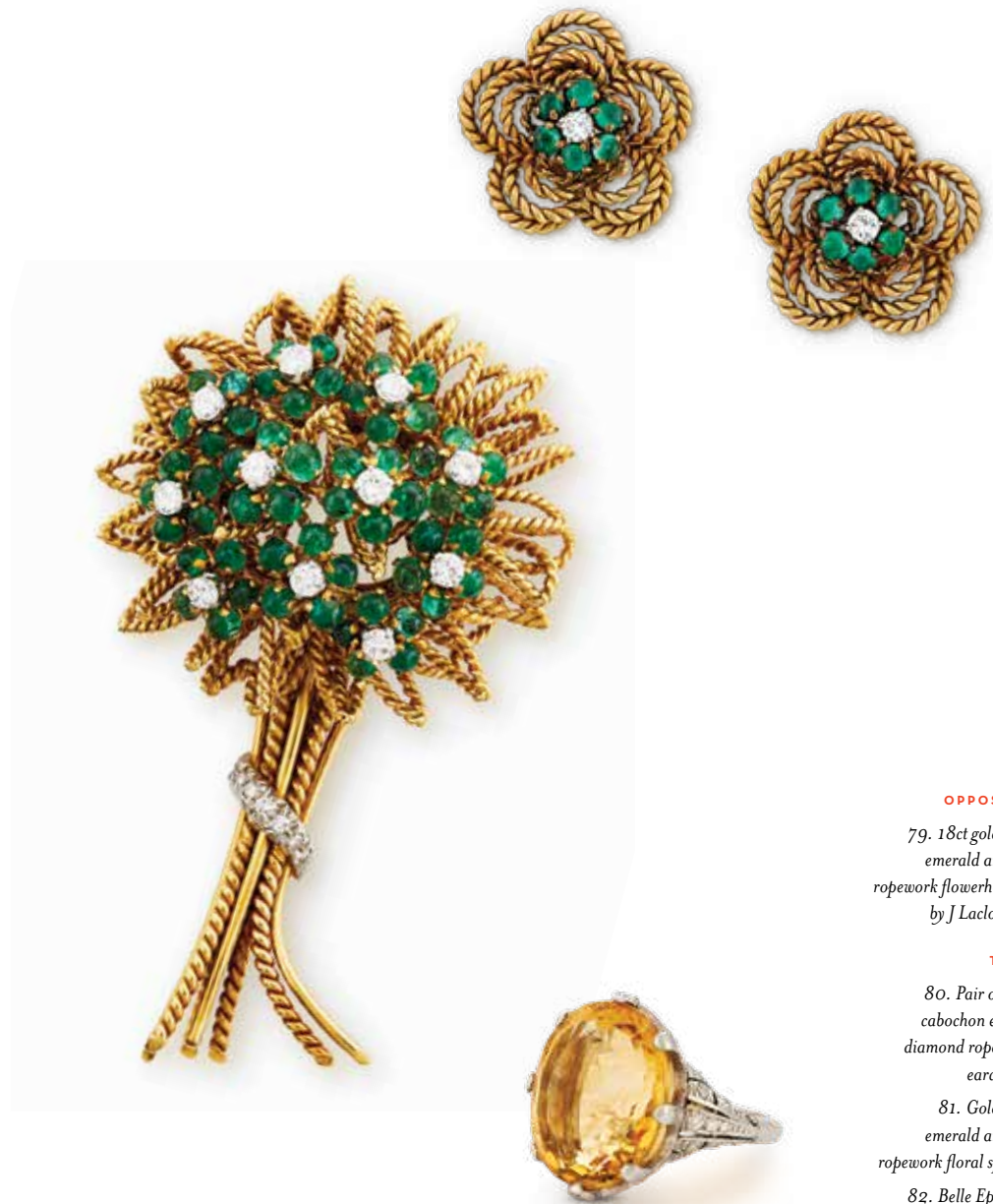
77. Pair of cultured pearl and diamond target cluster earstuds



OPPOSITE PAGE

78. Antique diamond openwork floral cluster brooch, the central old mine-cut diamonds weighing approx. 2.00cts and 1.25cts, in silver and gold





OPPOSITE PAGE

79. 18ct gold, cabochon emerald and diamond ropework flowerhead bracelet by J Lacroche, French

THIS PAGE

80. Pair of 18ct gold, cabochon emerald and diamond ropework floral earclips, French

81. Gold, cabochon emerald and diamond ropework floral spray brooch

82. Belle Epoque citrine and diamond ring, the cushion-shaped citrine weighing 11.59cts



THIS PAGE

83. Pair of diamond and gem-set 'aero wheel' ear-pendants by David Morris, with interchangeable polished onyx or jade discs

84. Amethyst and diamond rectangular cluster ring, in platinum



OPPOSITE PAGE

85. Multi-coloured vari-cut sapphire and diamond bib necklace, in 18ct white gold





OPPOSITE PAGE

86. Antique Burmese sapphire and diamond lozenge-shaped link bracelet, the ten cushion-shaped sapphires weighing 16.28cts in total, in silver and gold



THIS PAGE

87. Antique Burmese sapphire and diamond oval cluster ring, the cushion-shaped sapphire weighing 9.01cts, in silver and gold

88. Victorian Ceylon sapphire and diamond cluster bangle/brooch, the cushion-shaped sapphire weighing 14.07cts, in fitted case by James Savage

89. Ceylon sapphire and diamond cluster ring, the oval cushion-shaped sapphire weighing approx. 7.00cts, in silver and gold





THIS PAGE

90. French-cut sapphire and diamond articulated ribbon bow brooch, the central diamond weighing approx. 1.00ct, in gold and platinum

91. Antique blue enamel and diamond cruciform dress ring, the old mine-cut diamond weighing approx. 1.25ct, in silver and gold

92. Fine Art Deco rock crystal, diamond and guilloché enamel desk clock by Cartier, circa 1920



OPPOSITE PAGE

93. Victorian diamond and blue guilloché enamel cross and serpent pendant with heart-shaped runner, in gold





OPPOSITE PAGE

94. Antique Ceylon colour-change sapphire and diamond cluster ring, the cushion-shaped sapphire weighing 5.88cts, in silver and gold



THIS PAGE

95. Pair of sapphire and diamond rectangular panel cufflinks by de Grisogono, in 18ct white gold

96. Art Deco calibré sapphire and old mine-cut diamond tapering bar brooch

97. Edwardian sapphire and diamond alternate section bar brooch, in platinum and gold

98. 18ct ribbed gold and square-cut sapphire and diamond tapering band ring



OPPOSITE PAGE

102. *Antique oval-cut amethyst rivière choker necklace, in 9ct gold*

103. *Antique pearl, diamond and pink topaz star cluster pendant, in silver and gold*



THIS PAGE

99. *Edwardian ruby and diamond three-stone half-hoop ring, in 18ct gold*

100. *Cushion-shaped ruby three-stone half-hoop ring, in 18ct gold*

101. *Burmese ruby and diamond cluster ring, the oval cushion-shaped ruby weighing 1.72ct, in 18ct gold*



OPPOSITE PAGE

104. Gold and enamel novelty giraffe brooch, with single diamond eye



THIS PAGE

105. Pair of antique diamond collet ear pendants, the drops weighing approx. 0.80ct each, in platinum and gold

106. Pair of 18ct gold and turquoise fluted bombe earclips by Tiffany & Co

107. Pair of diamond twin boule ear-pendants, in gold

“ THE SECRET
OF STAYING YOUNG
IS TO LIVE HONESTLY,
EAT SLOWLY AND LIE
ABOUT YOUR AGE ”

– LUCILLE BALL



THIS PAGE

108. Pair of brilliant-cut
diamond and gold wirework
sea anemone earclips

109. Citrine and gold
ribbed cocktail ring, French



OPPOSITE PAGE

110. Victorian diamond
pavé heart-pendant,
in silver and gold, locket
compartment to the reverse





THIS PAGE

- 111. 18ct gold and diamond gypsy ring by Van Cleef & Arpels
- 112. 18ct 'Molten Gold' necklace by Elizabeth Gage, in fitted case
- 113. 18ct gold fancy plaited link necklace
- 114. Pair of 18ct gold and diamond bombe heart earclips by Tiffany & Co., French

THIS PAGE

- 115. Art Nouveau 18ct yellow gold openwork lozenge link longchain, French
- 116. Pair of three-colour 18ct gold 'Trinity' earclips by Cartier, French marks
- 117. Baguette diamond and gold twin bombe band ring by Cartier



THIS PAGE

118. 18ct yellow gold and diamond pendant cross

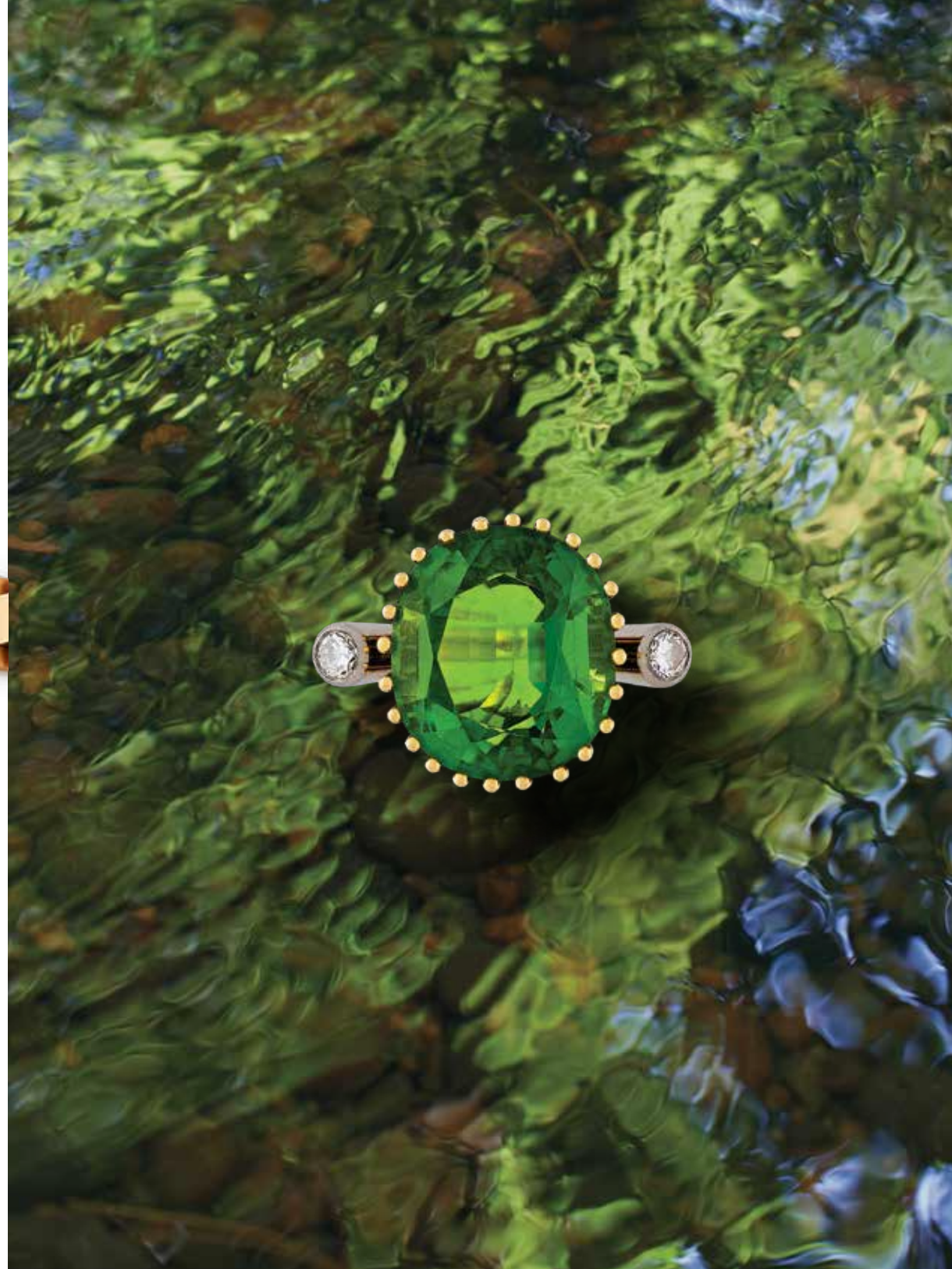
119. 1940s 18ct gold stylised tank track bracelet, French

120. Diamond and peridot interchangeable shield earstuds by Cassandra Goad, in 18ct yellow gold



OPPOSITE PAGE

121. Peridot and diamond contemporary wirework cocktail ring, in gold





OPPOSITE PAGE

122. 9ct gold open oval link bracelet

THIS PAGE

123. Lady's 9ct gold and diamond cocktail watch

124. 18ct gold filed chain link bracelet

125. 18ct gold 'Maillon Panthère' bracelet by Cartier, in fitted case

126. 18ct gold oval chain link bracelet





THIS PAGE

127. Edwardian pearl and diamond cluster stickpin, in gold, in fitted case

128. Victorian diamond game bird stickpin with ruby eye, in silver

129. Victorian diamond fox mask stickpin with ruby eyes, in silver and gold

130. Lapis lazuli, onyx and diamond geometric circular stickpin by Cartier, numbered, French

131. Victorian diamond rabbit stickpin with cabochon ruby eye, mounted in silver

OPPOSITE PAGE

132. Gold owl stickpin, with ruby eyes





OPPOSITE PAGE

133. Art Deco black onyx and diamond dress set comprised of four circular buttons, a pair of cufflinks and two dress studs, in fitted case stamped W.M Ogden

THIS PAGE

134. Pair of mother-of-pearl and gold stitched button cufflinks

135. Pair of green enamel, mother-of-pearl and gold stitched button cufflinks

136. Pair of 18ct gold 'Chapeau Chinois' cufflinks by Cartier, numbered, French, in fitted case

137. Pair of Edwardian seed pearl and black and white enamel disc cufflinks, in 18ct gold

138. Pair of 18ct gold meshwork baton cufflinks by Boucheron, French

139. Pair of 9ct ribbed gold panel link cufflinks by Cartier, London



THIS PAGE

140. Rare early 19th century diamond and gem-set eagle brooch, mounted in silver, in fitted case

141. 18ct gold filed chain link bracelet by Boucheron, numbered, French marks, in fitted case

142. Antique diamond and demantoid garnet lizard brooch, in silver and gold

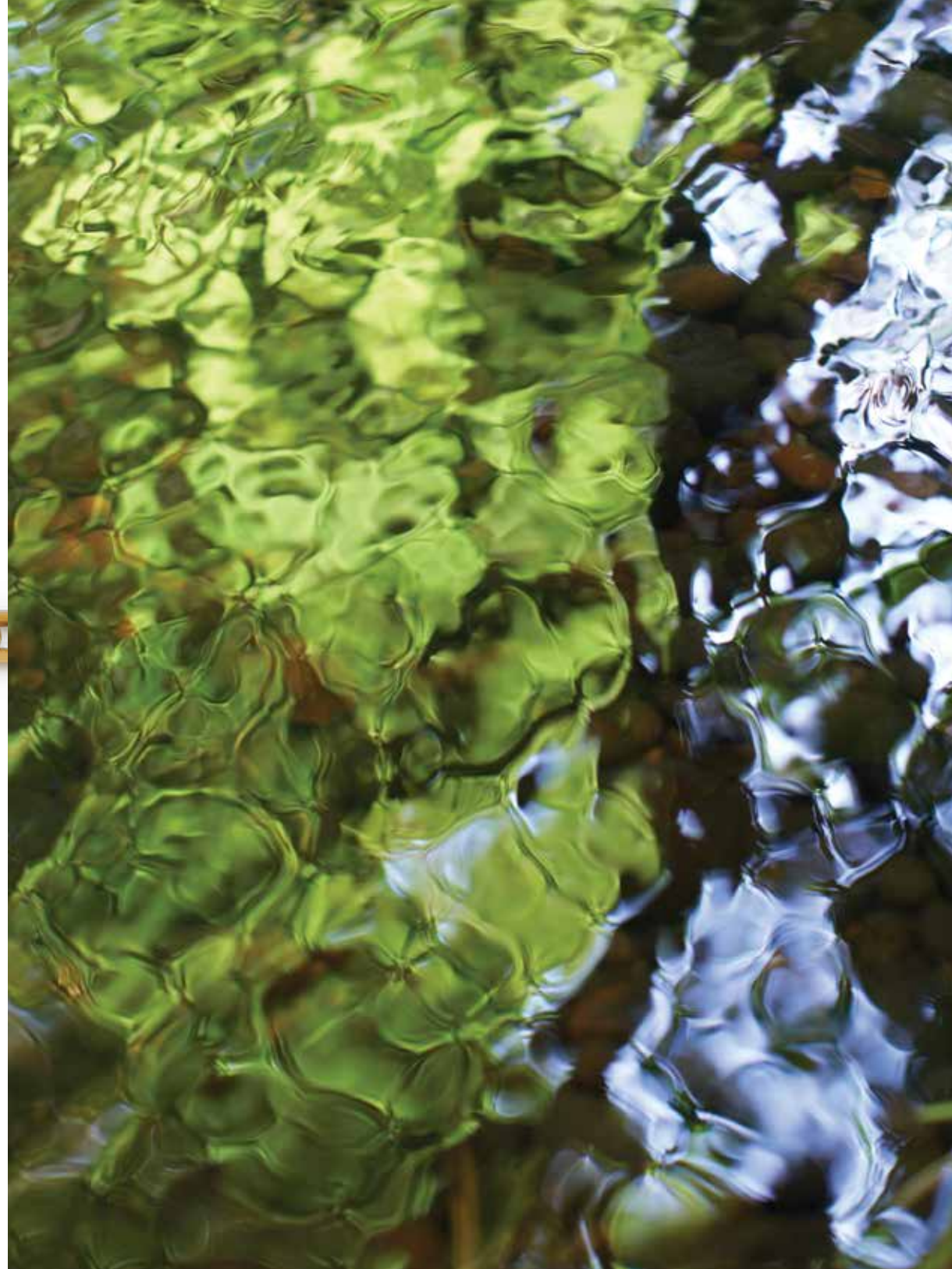
BACK COVER

143. Pair of diamond flowerhead earclips by Tiffany, in 18ct yellow gold



JEWELLERY PHOTOS | PRUDENCE CUMING

| ART DIRECTION · PRISCILLE NEEFS | BACKGROUND PHOTOS · TOM MANNION |





HUMPHREY BUTLER LTD

40/41 PALL MALL, LONDON SW1Y 5JG

TELEPHONE +44 (0)20 7839 3193 FAX +44 (0)20 7930 5943

HUMPHREY@HUMPHREYBUTLER.COM

WWW.HUMPHREYBUTLER.COM