



# HUMPHREY BUTLER

*Agents & Dealers in Fine Jewellery*

2018/2019

2018/2019

# HUMPHREY BUTLER

*Agents & Dealers in Fine Jewellery*



HUMPHREY BUTLER LTD

40/41 PALL MALL, LONDON SW1Y 5JG  
TELEPHONE +44 (0)20 7839 3193 FAX +44 (0)20 7930 5943

HUMPHREY@HUMPHREYBUTLER.COM  
WWW.HUMPHREYBUTLER.COM

---



FTER THE GRANITE FOUNDATIONS

of our last brochure, we have chosen an architectural theme for this year's offering. Goethe once claimed that architecture was nothing less than 'frozen music', an epithet that might just as easily be applied to the finer examples of the jeweller's art, so it seems an appropriate enough background for what we again feel is a strong and diverse selection of stock.

In terms of the magnificent we have, on page 17, a particularly impressive square and baguette diamond bracelet made by Cartier's London workshop at the height of their powers in the 1950's. As an alternative, the 9.25ct rectangular diamond on page 5 is something of a showstopper, while the two diamond necklaces on pages 9 and 14 would do justice to any red carpet. For those in search of marginally more affordable glamour, we have a gorgeous waterfall of pearls on page 29, a diamond bow on page 18 to rival anything seen at the royal wedding last May, a great selection of gold bracelets by Cartier and a range of very pretty earrings to complement any little black dress. It will be a surprise to no-one that the pair of knockout aquamarine and diamond chandeliers on page 34 found admirers as soon as they appeared on Instagram.

Focusing on more contemporary design, you will find on pages 20 and 48 a small collection of pieces by Andrew Grima, including an unusual colour-change sapphire and diamond ring. Grima's striking modernist work has enjoyed something of a renaissance in recent years; anyone nostalgic

**FRONT COVER**

*1. Pair of cultured pearl and diamond Christmas tree ear-pendants*

**PREVIOUS PAGE**

*2. Late 19th century diamond falcon pendant, mounted in silver and gold*

for the 1960's need look no further. Animal friendly enterprise that we are, we have also assembled quite a menagerie this year with the domestic (page 61), sporting (page 64), agricultural (page 65) and even literary (page 70) spheres well represented, plus the odd owl and bumble bee. The great highlight has to be the lovely Victorian midnight blue enamel and diamond serpent bangle on page 53; models of this quality are rare and almost never found in such excellent condition. This particular snake has all the slithery allure of Kaa from the Jungle Book.

As ever, we're here to help with repairs or alterations and happy to undertake the necessary research if you're after something specific. Recently we have had success in sourcing two large high quality diamonds and a Premier League emerald for individual clients, while continuing to find new homes for pieces at all levels. The market for coloured stones and signed jewels remains particularly strong, so we are always happy to take a look at anything you might be unsure about and offer our advice without the slightest obligation. You may be pleasantly surprised.

We very much look forward to seeing you in Pall Mall over the coming months but, in the meantime, you can always keep up with everything we are up to on Instagram and via the website.



“ ALL I ASK IS THE  
CHANCE TO PROVE  
THAT MONEY CAN'T  
MAKE ME HAPPY ”

– SPIKE MILLIGAN

**THIS PAGE**

3. Pair of brilliant-cut diamond earstuds, the diamonds weighing 2.01cts each, I colour, VS1 clarity

4. Diamond single-stone ring by Raymond Yard, the heart-shaped diamond weighing 1.77ct, G colour, VS2 clarity

5. Unmounted oval diamond weighing 2.04cts, H colour, VS1 clarity

**OPPOSITE PAGE**

6. Diamond single-stone ring, the tinted emerald-cut diamond weighing 9.25cts, VVS2 clarity





**OPPOSITE PAGE**

7. Mid-20th century emerald bead and diamond cascade brooch

**THIS PAGE**

8. Pair of mid-20th century baguette and brilliant-cut diamond fan earclips

9. Circular-cut emerald and diamond cluster ring, monture Mauboussin, the emerald weighing 2.59cts

10. Diamond and calibré emerald cluster ring, the cushion-shaped diamond weighing 6.66cts

11. Art Deco cushion-shaped emerald and diamond panel ring



**THIS PAGE**

12. Pair of brilliant-cut diamond flowerhead cluster earstuds

13. Brilliant-cut diamond bombé cocktail ring, mounted in platinum, French

**OPPOSITE PAGE**

14. Baguette and brilliant-cut diamond floral garland tapering necklace with step-cut diamond centre





**OPPOSITE PAGE**

15. *Pair of Art Deco diamond stylised fan clip brooches*

**THIS PAGE**

16. *Belle Epoque diamond spray brooch, mounted in platinum*

17. *Diamond tapering fish scale bracelet, mounted in platinum, French*

18. *Art Deco diamond geometric cocktail ring, mounted in platinum, French*



**THIS PAGE**

19. Brilliant and navette-cut diamond cluster tapering bracelet

20. Pair of natural pearl and diamond cluster earrings, mounted in silver and gold, the pearls measuring approx. 8.00mm

21. Sapphire and diamond boat-shaped cocktail ring, the sapphire weighing approx. 2.00cts, mounted in platinum

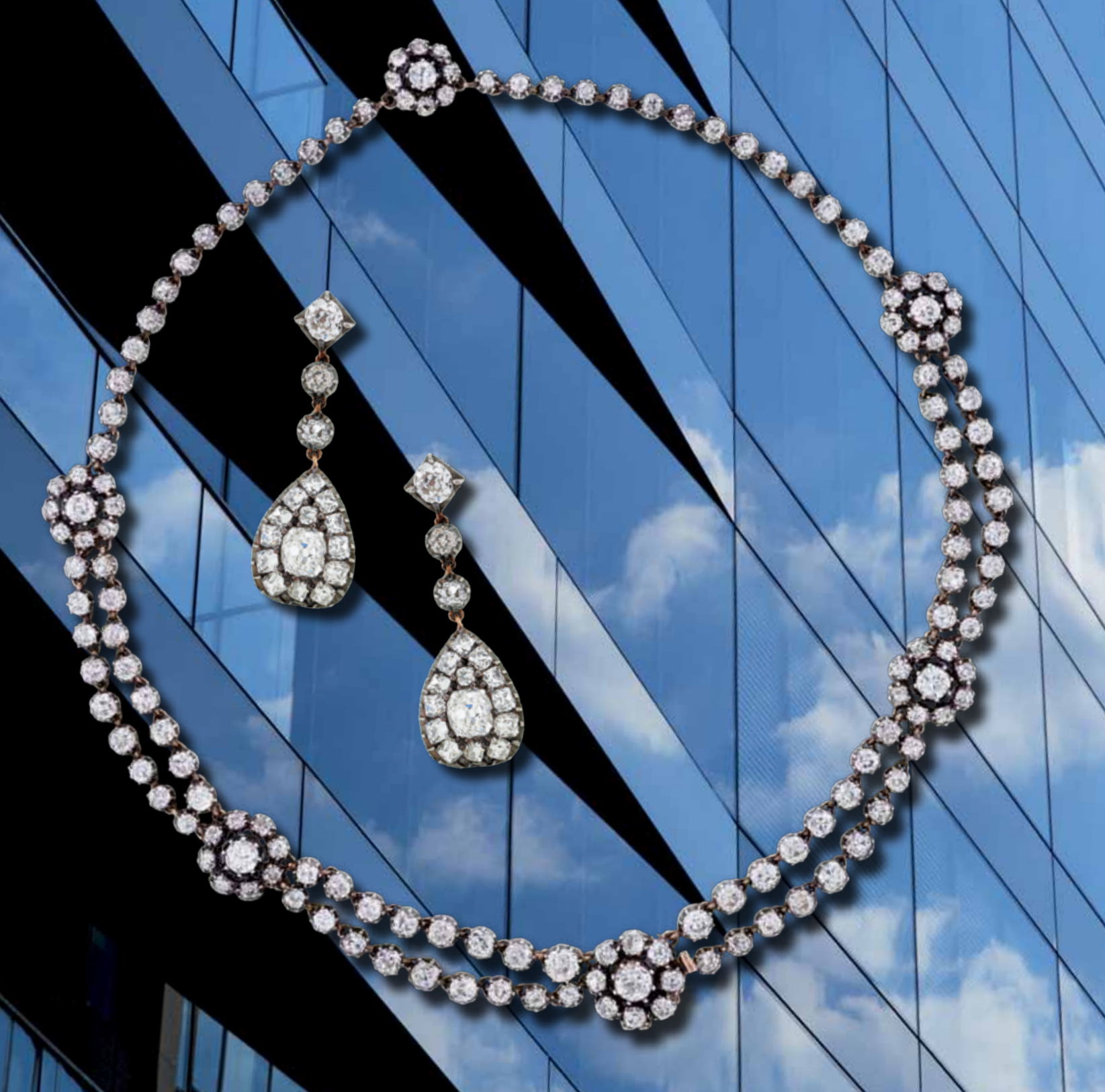
22. Cabochon sapphire and diamond cluster ring, mounted in platinum

**OPPOSITE PAGE**

23. Pair of diamond flower and leaf drop ear-pendants







**OPPOSITE PAGE**

- 24. Victorian old mine-cut diamond festoon necklace, mounted in silver and gold
- 25. Pair of antique diamond drop earrings, mounted in silver and gold

**THIS PAGE**

- 26. Pair of diamond and pearl cluster ear-pendants, mounted in 18ct white gold
- 27. Antique diamond openwork quatrefoil brooch pendant, mounted in silver and gold



**THIS PAGE**

28. *Pair of oval tanzanite and diamond rectangular earstuds*

29. *Brilliant and baguette-cut diamond trefoil line necklace*

30. *Cushion-shaped diamond ring, the diamond weighing 4.75cts, M colour, SI clarity*



**OPPOSITE PAGE**

31. *Mid-20th century baguette and square-cut diamond bracelet by Cartier London, mounted in platinum*





- OPPOSITE PAGE**
- 32. Art Deco diamond bow brooch, mounted in platinum, French
- THIS PAGE**
- 33. Art Deco diamond panel cocktail watch, mounted in platinum
  - 34. Antique diamond octafoil brooch pendant, mounted in silver and gold
  - 35. Old mine-cut diamond quatrefoil cluster ring, mounted in 18ct gold



**THIS PAGE**

36. Pair of natural pearl and diamond swing-set ear-pendants, mounted in silver and gold

37. Colour-change sapphire and diamond cocktail ring by Grima, mounted in textured white gold



**OPPOSITE PAGE**

38. Pair of cultured pearl and diamond cluster earclips, the pearls measuring 7.2mm in diameter

39. Brilliant-cut diamond and cultured pearl drop rivière necklace, mounted in white gold





**OPPOSITE  
AND THIS PAGE**

40. Thai ruby and diamond  
kite-shaped demi-parure,  
comprising a pair of  
earrings and a pendant

**THIS PAGE**

41. Art Deco calibre ruby  
and old mine-cut diamond  
bar brooch, mounted  
in silver and gold

42. Edwardian Burmese  
ruby and old mine-cut  
diamond cluster ring,  
mounted in platinum

“ YOU CAN ONLY HOLD  
YOUR STOMACH IN FOR  
SO MANY YEARS ”

– BURT REYNOLDS



**THIS PAGE**

43. Cushion-shaped spinel and diamond cocktail ring, the spinel weighing 3.99cts

44. Circular-cut ruby and diamond floral cocktail ring by Oscar Heyman, mounted in platinum

45. Circular-cut diamond and calibré ruby oval cluster ring, mounted in 18ct gold, French

**OPPOSITE PAGE**

46. Art Deco ruby and diamond panel bracelet, mounted in platinum, French





OPPOSITE PAGE

47. Art Deco calibré ruby and diamond buckle link bracelet by J. E. Caldwell, mounted in platinum

48. Antique ruby and diamond three-row quatrefoil link bracelet, mounted in silver and gold, French



THIS PAGE

49. Pair of antique old mine-cut diamond cluster ear-pendants, mounted in silver and gold

50. Oval ruby and brilliant-cut diamond alternate section line bracelet, mounted in 18ct gold

51. Edwardian cushion-shaped garnet and diamond cluster ring

52. Pair of antique natural grey pearl and old mine-cut diamond ear-pendants, the pearls measuring 7.3 to 7.4mm in diameter

**THIS PAGE**

53. Belle Epoque diamond and natural pearl garland style openwork bracelet, mounted in platinum, French

54. Brilliant-cut diamond line bracelet, mounted in platinum

55. Art Deco French-cut diamond line bracelet, mounted in platinum

56. Diamond single-stone ring, the circular-cut diamond weighing 1.28cts, H/I colour, SI1 clarity

**OPPOSITE PAGE**

57. Natural pearl and brilliant-cut diamond nine-row collar necklace







**OPPOSITE PAGE**

58. Pair of antique diamond floral spray earclips, mounted in silver and gold



**THIS PAGE**

59. Antique rose-cut diamond crowned heart pendant, mounted in silver and gold

60. Edwardian old mine-cut diamond floral openwork pendant, mounted in silver and gold

61. Victorian white enamel, pearl and diamond memorial heart and initial 'F' pendant

62. Pearl and diamond three-stone ring, the pearl measuring 8.3mm in diameter, mounted in gold

63. Diamond three-stone carved half-hoop ring, mounted in gold



**THIS PAGE**

64. *Antique Burmese sapphire and diamond cluster brooch, the sapphire weighing 3.50cts, mounted in silver and gold*

65. *Art Deco calibre sapphire and brilliant-cut diamond ribbon bow brooch*

66. *Pair of sapphire and diamond trefoil earclips, mounted in silver and gold*

**OPPOSITE PAGE**

67. *Edwardian diamond stirrup lavallière necklace, mounted in platinum*





**OPPOSITE PAGE**

68. Pair of impressive mixed-cut aquamarine and diamond girandole earrings

**THIS PAGE**

69. Pair of Art Deco onyx, black enamel and diamond tassel ear-pendants

70. French-cut diamond pendant cross

71. Art Deco onyx and diamond twin target cocktail ring, mounted in platinum, French

THIS PAGE

72. Pair of oval star sapphire and diamond cluster ear-pendants



73. Art Deco calibre sapphire and diamond chequerboard bow brooch, mounted in silver and gold



74. Oval star sapphire and diamond cluster ring

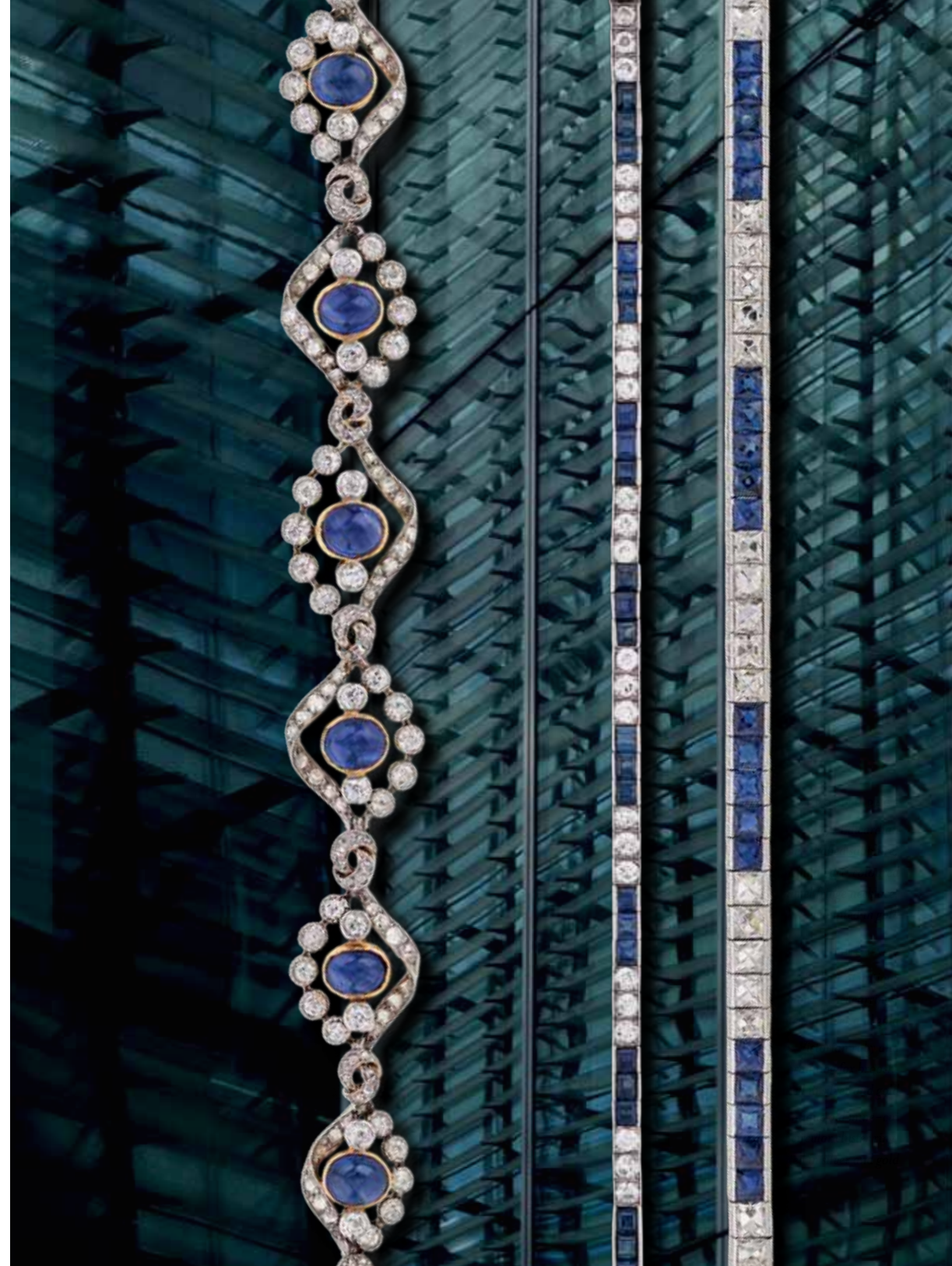


OPPOSITE PAGE

75. Early 20th century cabochon sapphire and diamond knotted ribbon bracelet

76. Calibre sapphire and diamond alternate section line bracelet

77. Art Deco French-cut sapphire and diamond alternate section line bracelet, mounted in platinum





**OPPOSITE PAGE**

*78. Diamond running fox brooch, mounted in 18ct white gold*



**THIS PAGE**

*79. Antique natural pearl and diamond oval cluster brooch, mounted in silver and gold*

*80. Diamond floral spray clip brooch with scrolled ribbon mount*

*81. Pair of aquamarine and diamond tear drop ear-pendants*

*82. Brilliant-cut diamond Star of David pendant, mounted in 18ct gold*



**THIS PAGE**

83. Large antique oval amethyst and diamond cluster brooch, mounted in silver and gold

84. Circular-cut amethyst and diamond button cocktail ring, mounted in silver and gold

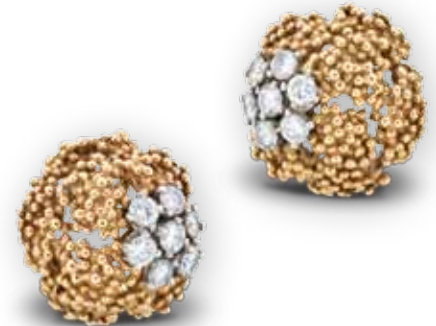
85. Edwardian diamond and calibre amethyst alternate section open circle brooch by Paltscho

86. Cabochon amethyst and diamond lattice-work cocktail ring, mounted in 18ct white gold

**OPPOSITE PAGE**

87. Pair of impressive briolette amethyst and diamond ear-pendants





**OPPOSITE PAGE**

88. Pair of diamond and sapphire flowerhead earclips, by Missiaglia, mounted in gold

**THIS PAGE**

- 89. Cabochon sapphire, diamond and gold twisted ropework bracelet
- 90. Calibré sapphire and diamond Royal Thames Yacht Club burgee brooch, mounted in 18ct white gold
- 91. Pair of textured 18ct gold and brilliant-cut diamond abstract earclips by Boucheron
- 92. 14ct gold flattened ropework circle brooch by Tiffany & Co.



**THIS PAGE**

93. *Antique ruby and diamond bee brooch, mounted in silver and gold*

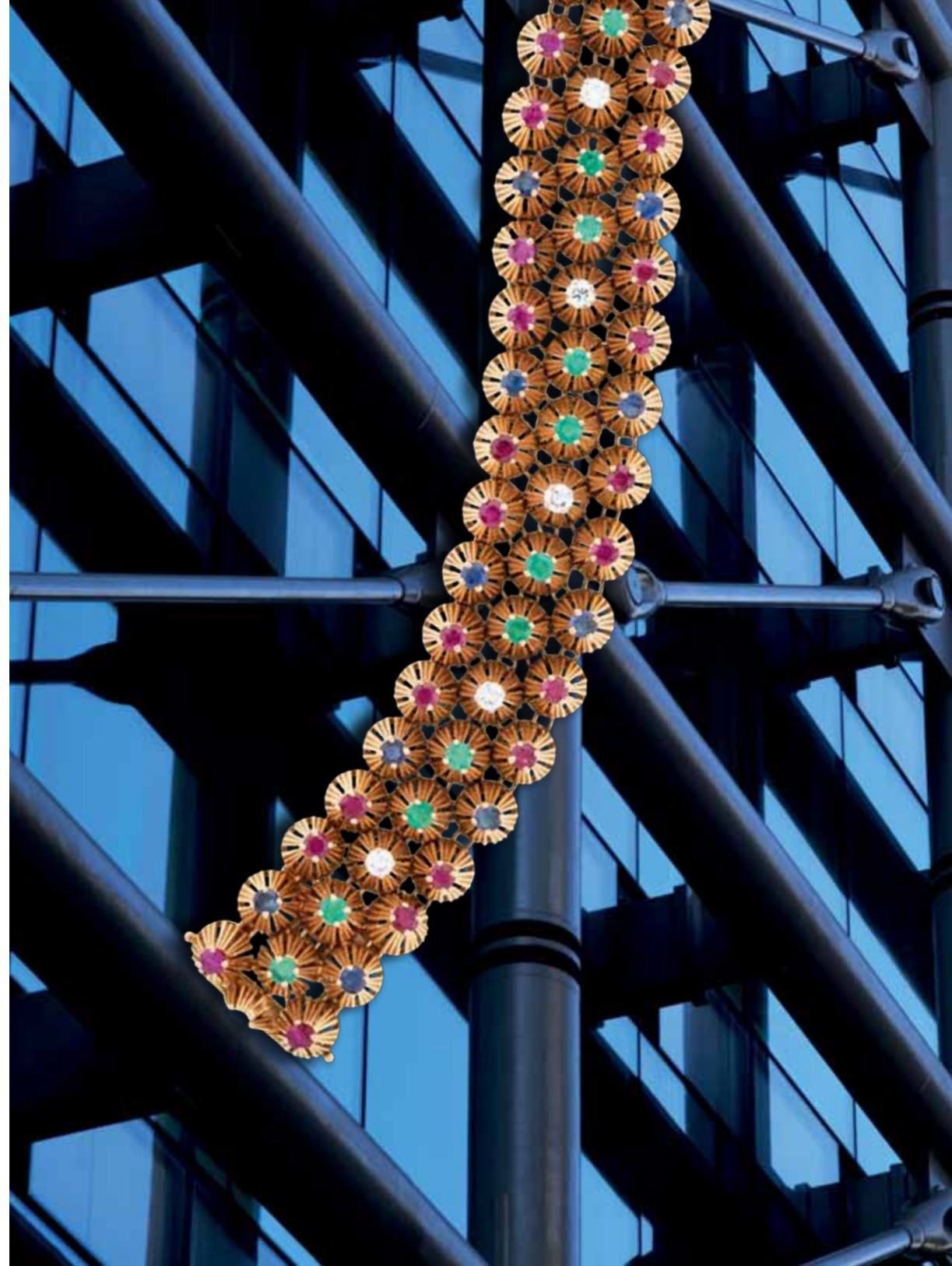
94. *18ct gold African style filigree hinged bracelet*

95. *Pair of 18ct gold and gem-set bombé earclips, French, circa 1940*



**OPPOSITE PAGE**

96. *Gem-set fluted three-row bracelet, mounted in 18ct gold, French, circa 1940*







OPPOSITE PAGE

97. Antique Colombian emerald and diamond openwork panel brooch, the emerald weighing 2.71cts, mounted in silver and gold



THIS PAGE

98. Late 19th century pear-shaped emerald and diamond pendant, mounted in silver and gold

99. 18ct gold mesh and diamond envelope cigarette case by Cartier London

100. Late 19th century step-cut emerald and diamond three-stone half-hoop ring, mounted in 18ct gold, French

101. Rare early 18th century Colombian emerald and pearl cluster brooch, the emerald weighing 3.33cts



**THIS PAGE**

102. Opal, diamond and gold abstract pendant-necklace by Grima on brick-link longchain

103. Pair of 18ct gold and diamond stylised flame earclips by Grima

104. 18ct gold and gem-set bombé cocktail ring

105. 18ct gold oval openwork bracelet by Cartier, French

**OPPOSITE PAGE**

106. 18ct yellow gold and gem-set hinged cuff





**OPPOSITE PAGE**

107. Pair of antique  
14ct gold buckle  
ear-pendants with  
tassel terminals

**THIS PAGE**

108. 15ct gold ribbed  
gate link bracelet

109. Mixed-cut gem-set  
giardinetto brooch,  
with calibre sapphire base,  
mounted in gold

110. Brilliant-cut coloured  
and white diamond  
giardinetto brooch,  
mounted in gold



**THIS PAGE**

111. Green and white enamel and diamond figure-eight link bracelet, mounted in gold

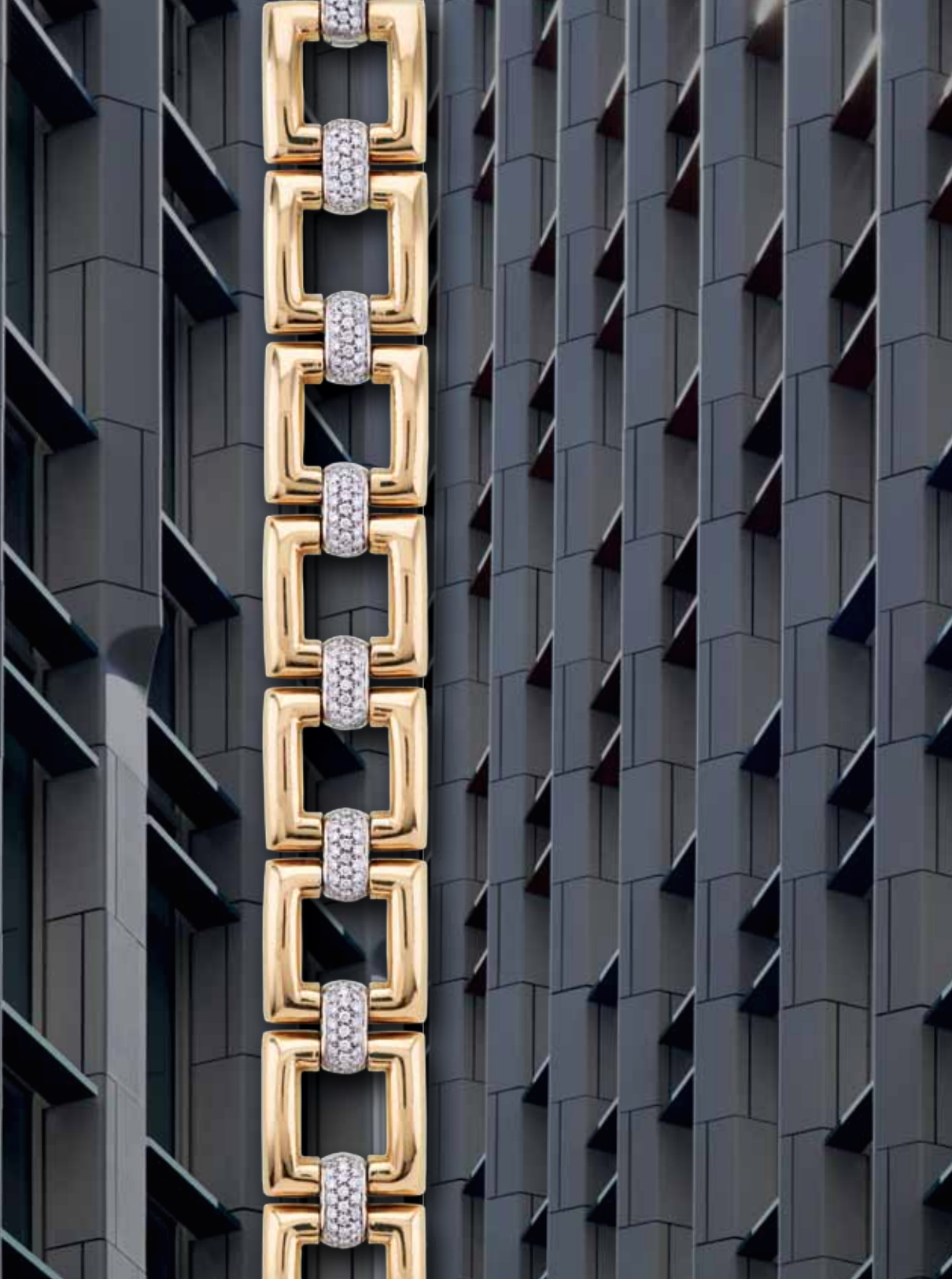
112. 15ct gold fancy-link longchain, 31"

113. 18ct gold and cushion-shaped sapphire figure-eight link necklace by Paloma Picasso for Tiffany & Co.

**OPPOSITE PAGE**

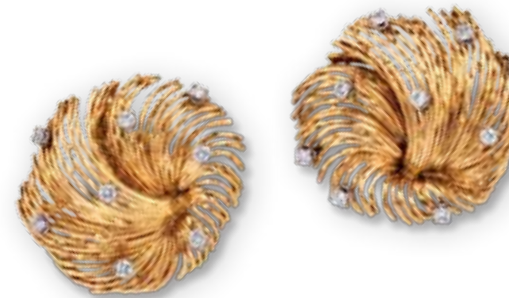
114. Victorian blue enamel and cushion-shaped diamond hinged snake bangle, mounted in gold





“ AH YES, DIVORCE:  
FROM THE LATIN WORD  
MEANING TO RIP OUT  
A MAN’S GENITALS  
THROUGH HIS WALLET.”

– ROBIN WILLIAMS



**OPPOSITE PAGE**

115. 18ct gold and brilliant-cut diamond openwork buckle bracelet, Italian

**THIS PAGE**

116. Textured white gold and diamond Scottie dog brooch

117. Pair of 18ct gold and brilliant-cut diamond swirl earclips by Sterlé

118. Diamond openwork flower ring by Boucheron, mounted in 18ct gold, French



**THIS PAGE**

119. Pair of mid  
19th century archaeological  
revival gold ear-pendants  
with drop terminals

120. 18ct gold and diamond  
bombé feather cocktail ring

121. Pair of 19th century  
18ct gold archaeological  
revival ear-pendants

**OPPOSITE PAGE**

122. 18ct yellow gold  
plaited bracelet by Cartier





OPPOSITE PAGE

123. Textured 18ct gold and brilliant-cut diamond bracelet by Boucheron

124. Textured 18ct gold and circular-cut emerald bracelet by Boucheron

THIS PAGE

125. Antique gold and cabochon sapphire owl brooch

126. Antique demantoid garnet and diamond heart pendant

127. Gold and gem-set abstract brooch by Boucheron

128. Pair of textured 18ct gold and brilliant-cut diamond half-hoop earclips by Boucheron



**THIS PAGE**

129. Antique amethyst, topaz and diamond tassel brooch, mounted in silver and gold, Austro-Hungarian

130. Pair of 18ct gold and diamond knot earclips by Tiffany & Co.

131. Mixed-cut gem-set basket-of-flowers brooch, mounted in gold



**THIS PAGE**

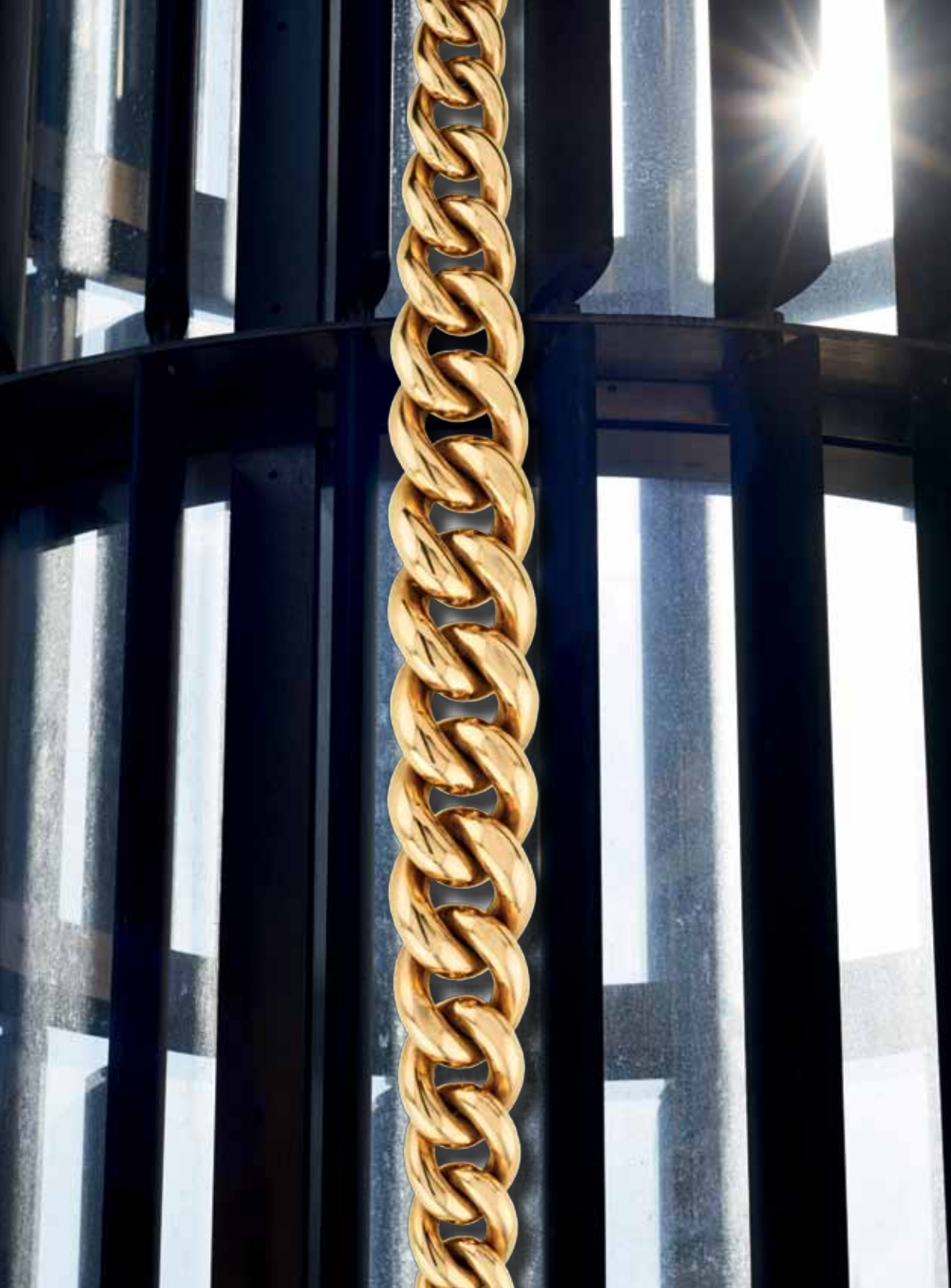
132. 18ct gold, cushion-shaped ruby and brilliant-cut diamond hinged bangle by Boucheron

133. Late 19th century 14ct gold portrait-locket 'Souvenir' bracelet, Dutch

134. Cushion-shaped diamond gypsy ring, the diamond weighing approx. 1.40ct, mounted in 18ct gold

135. 18ct gold and diamond Dachshund brooch





**OPPOSITE PAGE**  
136. Large 18ct gold curb link necklace, Italian

**THIS PAGE**  
137. Pair of Victorian black onyx and gold pyramid bracelets forming a choker

138. Renaissance revival enamel, star sapphire and gem-set necklace, mounted in gold

139. 18ct gold circular St. Christopher pendant



**THIS PAGE**

140. 18ct gold Australian wildlife charm bracelet

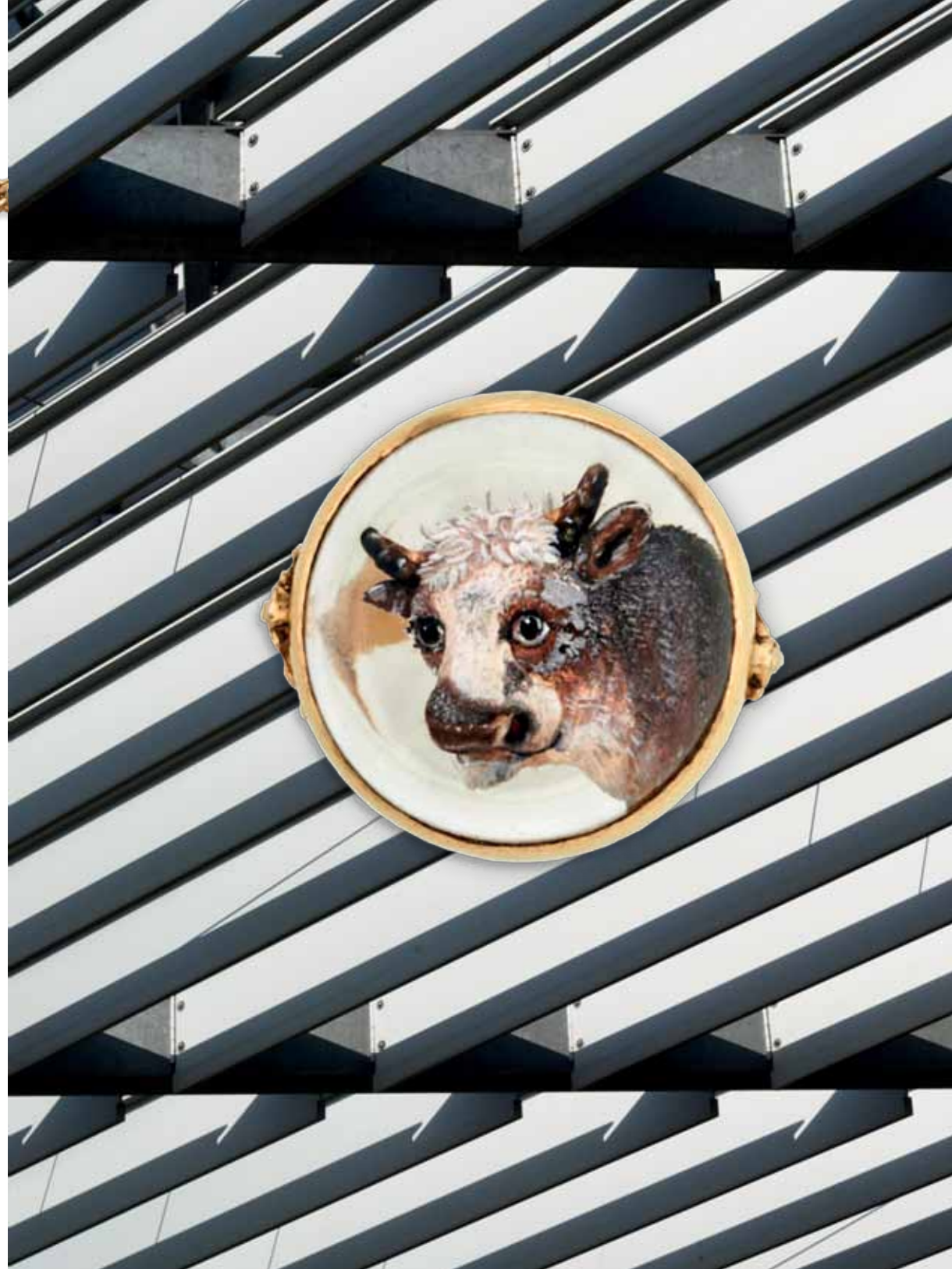
141. Pair of 14ct gold ribbed oval cufflinks by Tiffany & Co.

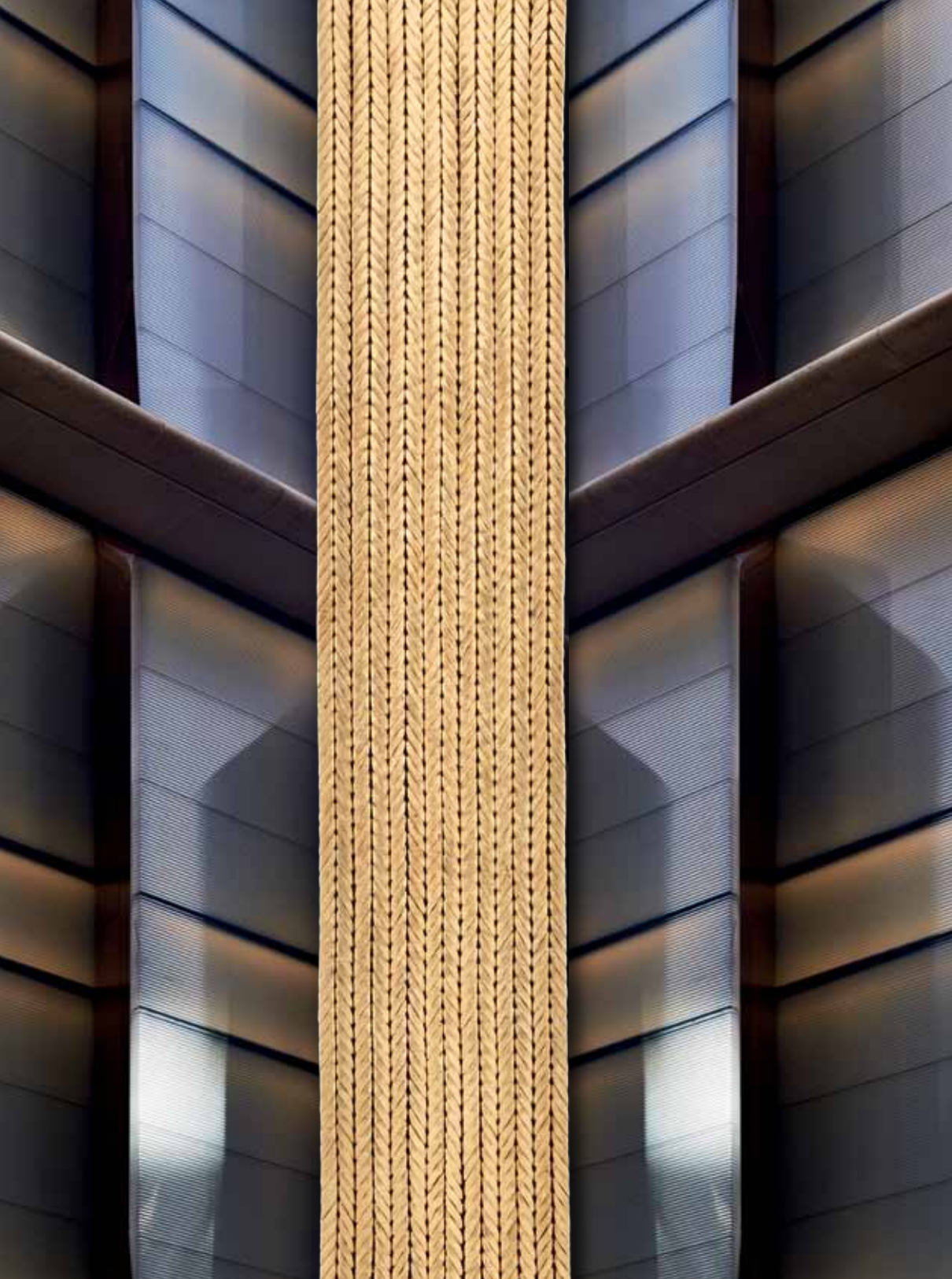
142. Pair of antique Essex crystal fox, cat and dog cufflinks, mounted in gold

143. Pair of Victorian 15ct gold and cabochon ruby fox mask and hunting horn cufflinks

**OPPOSITE PAGE**

144. Victorian Essex crystal intaglio bull ring, mounted in gold





**OPPOSITE PAGE**

*145. 18ct gold flattened herringbone bracelet by Cartier, London*



**THIS PAGE**

*146. Textured 9ct gold walnut watch by Cartier, London*

*147. Step-cut citrine ring watch by Jaeger LeCoultre, mounted in 18ct gold*

*148. 18ct gold walnut locket pendant, containing four portrait compartments*

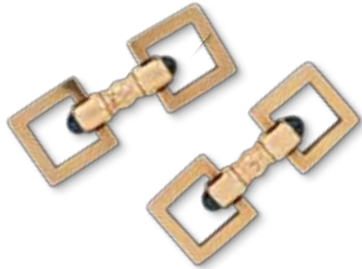
*149. Pair of antique 18ct gold seed pearl and turquoise textured oval cufflinks*

*150. Pair of 14ct gold square chequerboard cufflinks by Cartier*



**OPPOSITE PAGE**

156. Lady's 18ct gold 'Tank' Louis Cartier wristwatch by Cartier



**THIS PAGE**

151. Early 20th century agate cigarette case with gem-set and enamel hinges, mounted in 18ct gold, French

152. Pair of 18ct gold and sugarloaf sapphire snaffle cufflinks, French

153. Pair of ribbed 14ct yellow gold baton cufflinks by Cartier

154. Pair of Art Deco 14ct gold and cabochon sapphire square snaffle cufflinks

155. Pair of Victorian 18ct gold domed oval cufflinks





OPPOSITE PAGE

157. Antique diamond tortoise and hare brooch, mounted in silver and gold



THIS PAGE

158. Rose-cut diamond and ruby cockerel and hen jabot-pin, mounted 18ct gold, French

159. Pair of sugarloaf sapphire baton cufflinks, mounted in platinum

160. Pair of Edwardian gold, mother-of-pearl and blue enamel button cufflinks

161. Antique gem-set Tricolore trefoil stickpin, mounted in yellow gold

162. Late 19th century diamond, enamel and ruby fox's mask stickpin, mounted in silver and gold

**THIS PAGE**

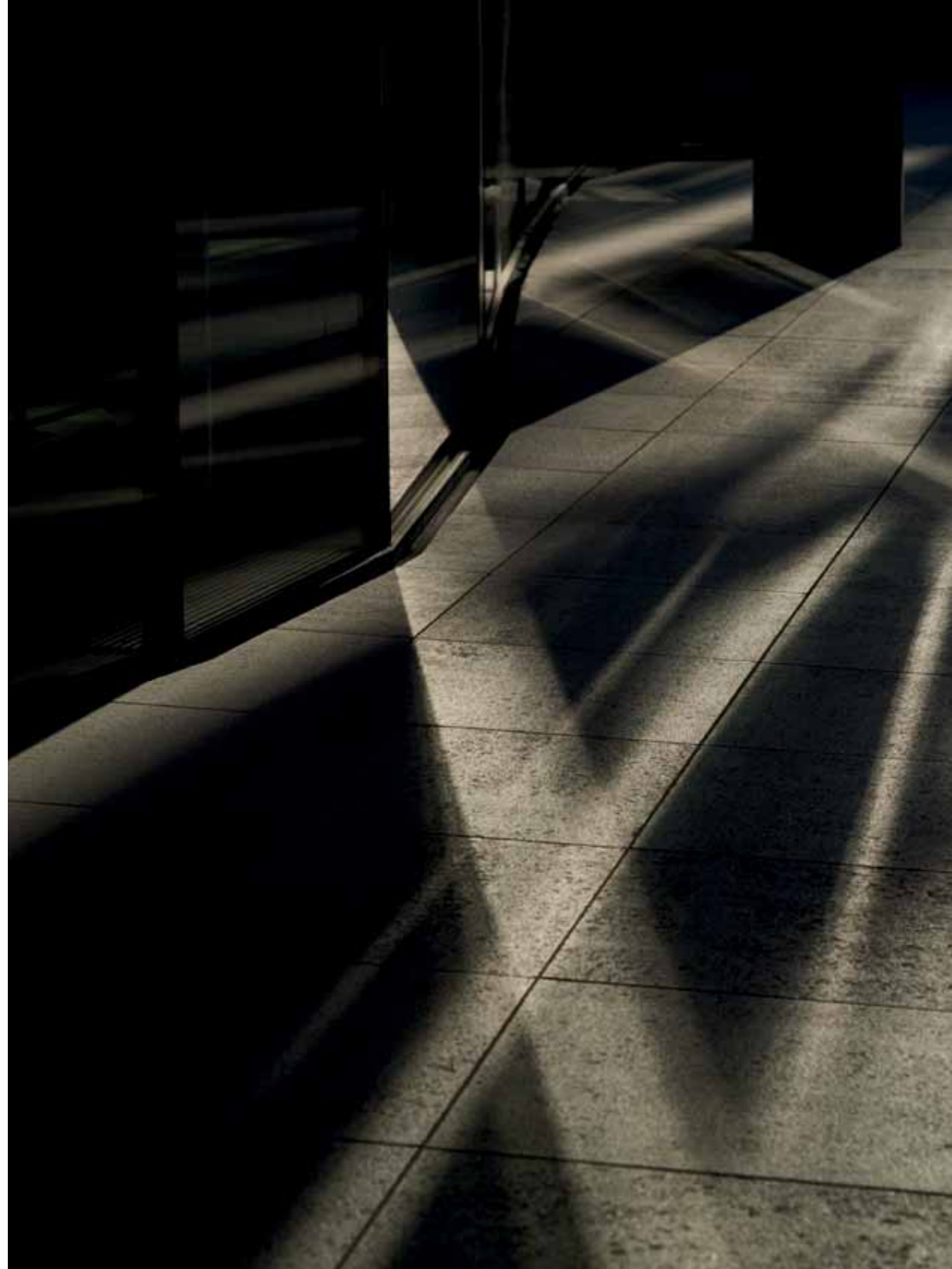
163. *Antique old mine-cut diamond and ruby partridge brooch, mounted in silver and gold*

**BACK COVER**

164. *Antique sapphire and diamond flying insect brooch with ruby eyes, mounted in silver and gold*



| ART DIRECTION · PRISCILLE NEEFS | PHOTOS · TOM MANNION |





HUMPHREY BUTLER LTD

40/41 PALL MALL, LONDON SW1Y 5JG

TELEPHONE +44 (0)20 7839 3193 FAX +44 (0)20 7930 5943

HUMPHREY@HUMPHREYBUTLER.COM

WWW.HUMPHREYBUTLER.COM