



HUMPHREY BUTLER

Agents & Dealers in Fine Jewellery



HUMPHREY BUTLER

Agents & Dealers in Fine Jewellery



HUMPHREY BUTLER LTD

40/41 PALL MALL, LONDON SW1Y 5JG
TELEPHONE +44 (0)20 7839 3193 FAX +44 (0)20 7930 5943

HUMPHREY@HUMPHREYBUTLER.COM
WWW.HUMPHREYBUTLER.COM

AS THE FIRST SWALLOW HERALDS THE ARRIVAL OF SPRING and the muffled roar of the first gilded supercar on Knightsbridge is a sure sign of the coming summer, so the arrival of the Humphrey Butler brochure on doormats from Inverness to St Ives heralds the year drawing to its close. Our last offering, with its stormy skylines, reflected the somewhat turbulent



times. This year we thought we could do with a strong and stable background of British-
hearth and stone, which enlivens what we feel is a particularly strong showing in terms of stock. However 2017 may have gone, I like to imagine that Churchill's views on champagne can be applied with equal emphasis to fine jewellery; in success it is deserved and in failure it is needed. So if spirits need lifting, look no further. We have an impressive array of bracelets this year, with a particularly

eye-catching example in aquamarine and diamonds on page 49, and a showy range of earrings including a pair of yellow diamond drops (p.5), some fruiting vines in rubies and diamonds (p.28) and the impressive late Georgian diamond ear-pendants on page 23 that would do justice to any duchess. For the antique purist, the diamond dog rose spray (p.20) takes some beating while our Victorian diamond necklace (p.19) would make the perfect tiara. In addition you will find gorgeous emeralds, a lovely pearl two-row necklace, an exquisite pearl and diamond choker and an old diamond toi-et-moi ring by Tiffany for the true romantic. There are also a handful of curiosities, not least among which is the first set of three cufflinks we have ever been offered, a novel innovation and an

FRONT COVER

1. *Antique diamond and cabochon ruby butterfly brooch, mounted en tremblant in silver and gold*

PREVIOUS PAGE

2. *Art Deco diamond, ruby and sapphire giardinetto brooch, mounted in platinum*

ideal present for the more forgetful husband or godson. We have a lizard that could appeal to disciples of Ken Livingstone, a beautifully made saxophone for fans of Andy Mackay (obscure Roxy Music reference), playing card cufflinks for gamblers and an Essex crystal dachshund brooch for those who prefer their dogs with a shorter length of leg. To keep in with the tide of public opinion, diversity is our watchword and we hope that there is something here for everyone, regardless of budget or taste and more is to be found at www.humphreybutler.com. However, if you are hunting for something in particular please do get in touch - we are happy to do the leg work for you.

We are fresh from negotiating the sale of a marvellous 14carat Kashmir sapphire on behalf of a private consignor who set a pretty high bar on the back of an auction



estimate, so if you do have pieces of your own that you would like to discuss, we are always available to offer practical, impartial advice; this covers not only sales but valuations and repairs, while we can provide reliable introductions to both the silver and watch market. We also keep a good stock of engagement rings and, in marked contrast to most retailers who seem to thrive on stress and confusion, we do all we can to calm the nerves and soothe the fears of prospective fiancées. If you are embarking on this daunting task - or know someone who is - and could benefit from advice without the least obligation, just get in touch. The door of 40-41 Pall Mall is always open, and for those of you further afield, you can follow everything we're up to on Instagram and on the website.

THIS PAGE

3. *Victorian rose-cut diamond pussy cat brooch, the cat playing with a pearl ball*



OPPOSITE PAGE
4. Art Deco diamond pierced bracelet, mounted in platinum

THIS PAGE
5. Pair of fancy intense yellow and white diamond pendant earrings, mounted in 18ct white gold
6. Art Deco diamond navette panel ring, the central diamond weighing approx. 0.75cts



THIS PAGE

7. Pair of antique diamond teardrop earrings, mounted in silver and gold

8. Burmese ruby and diamond cluster ring, the cushion-shaped ruby weighing 2.37ct

9. Art Deco circular-cut ruby and diamond half-hoop ring

OPPOSITE PAGE

10. Antique diamond leaf tassel necklace, mounted in silver and gold





OPPOSITE PAGE

11. Cultured pearl choker with cabochon emerald, ruby and diamond love trophy clasp, mounted in silver and gold

THIS PAGE

12. Pair of circular-cut emerald and diamond snowflake earclips

13. Step-cut Colombian emerald and diamond panel ring, the emerald weighing approx. 3.25cts

14. Step-cut emerald and diamond cluster ring, mounted in silver and gold



THIS PAGE

15. Square-cut Colombian emerald and diamond ring, the emerald weighing 1.93cts

16. Art Deco Colombian emerald and diamond bar brooch, the hexagonal emerald weighing 3.13cts, mounted in platinum, numbered

17. Colombian emerald and diamond ring, the emerald weighing 2.41cts, mounted in 18ct yellow and white gold

OPPOSITE PAGE

18. Art Deco step-cut emerald and diamond dress clip, mounted in platinum





OPPOSITE PAGE

- 19. Art Deco French-cut sapphire and diamond line bracelet, mounted in platinum
- 20. Art Deco diamond pierced wide band bracelet, mounted in platinum
- 21. Brilliant-cut diamond line bracelet, mounted in 18ct white gold

THIS PAGE

- 22. Belle Époque Ceylon sapphire and diamond pendant, the sapphire weighing 4.32cts, mounted in silver and gold
- 23. Brilliant-cut diamond single-stone ring, the diamond weighing 3.02cts, J colour, SI2 clarity, mounted in yellow gold



THIS PAGE

24. Two antique old mine-cut diamond floral spray brooches, mounted in silver and gold

25. Pair of oval sapphire and diamond cluster day and night ear-pendants

OPPOSITE PAGE

26. Pair of Art Deco diamond chandelier ear-pendants, mounted in platinum





OPPOSITE PAGE
27. Art Deco diamond buckle link bracelet, mounted in platinum

THIS PAGE
28. Diamond scroll and spray double-clip brooch
29. Brilliant-cut diamond single-stone ring, the diamond weighing 4.37cts, H colour, VVS2 clarity, mounted in 18ct white gold



THIS PAGE

30. Pair of Victorian style diamond floral cluster ear-pendants, mounted in silver and gold

31. Antique diamond floral bracelet, mounted in silver and gold

32. Antique diamond cluster ring, mounted in silver and gold

OPPOSITE PAGE

33. Late 19th century diamond swag and garland necklace/tiara, mounted in silver and gold





OPPOSITE PAGE

34. Victorian diamond dog rose spray brooch, mounted in silver and gold

THIS PAGE

35. Pair of Art Deco diamond drop earrings, mounted in platinum

36. Art Deco diamond cocktail watch with red leather cord strap

37. Brilliant-cut diamond ring, the central stone weighing approx. 0.75cts, mounted in platinum



THIS PAGE

38. Cushion-shaped Ceylon sapphire and diamond cluster ring, the sapphire weighing 13.02cts, mounted in silver and gold

39. Antique diamond snowflake brooch/pendant, the central diamond weighing 2.59cts, mounted in silver and gold

40. Antique diamond oval panel brooch, mounted in silver and gold

OPPOSITE PAGE

41. Pair of antique diamond chandelier ear-pendants, each drop weighing approx. 1.25ct, mounted in silver and gold





“ I LIKE MY MONEY
WHERE I CAN SEE IT...
ON MY FINGERS AND
AROUND MY NECK! ”



OPPOSITE PAGE
42. Art Deco gem-set
and pearl torsade bracelet,
mounted in platinum,
numbered, French marks



THIS PAGE
43. Vari-cut diamond
cocktail ring, mounted
in 18ct white gold

44. Sapphire and
diamond hexagonal
ring, mounted
in platinum, numbered



THIS PAGE

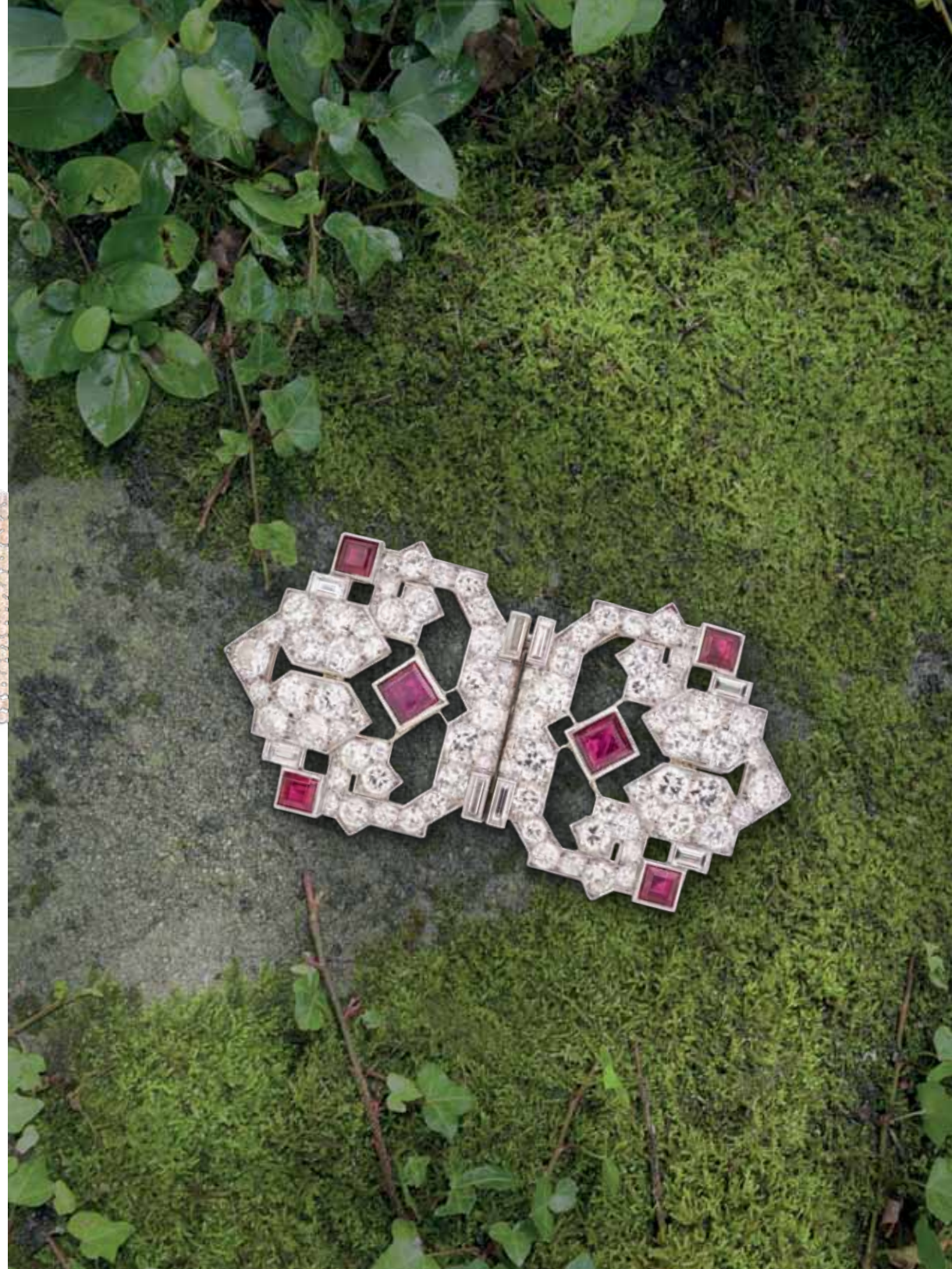
45. *Antique calibré-cut ruby and diamond red cross panel ring, mounted in silver and gold*

46. *Belle Epoque seed pearl and diamond eighteen-row choker*



**THIS PAGE BOTTOM
AND OPPOSITE PAGE**

47. *Art Deco ruby and diamond openwork double-clip brooch*





OPPOSITE PAGE

48. Pair of antique cushion-shaped ruby and diamond vine ear pendants, mounted in silver and gold

THIS PAGE

49. Antique ruby, emerald and diamond halberd brooch, mounted in silver and gold

50. Circular-cut ruby and diamond bombé cluster ring, mounted in gold

51. Art Deco cushion-shaped diamond cocktail ring, the diamond weighing 3.74cts, mounted in platinum



THIS PAGE

52. Pair of Art Deco abstract scroll diamond earclips

53. Art Deco carved rock crystal and diamond bow brooch, mounted in platinum, French marks, numbered

54. Edwardian diamond ring, the diamond weighing approx 2.10cts, mounted in platinum

OPPOSITE PAGE

55. Edwardian calibré-cut ruby and diamond interwoven bracelet, mounted in silver and gold





OPPOSITE PAGE

56. Natural pearl two-row necklace, the pearls measuring from 4.10mm to 7.30mm, pink topaz and diamond clasp

THIS PAGE

57. Antique ruby, diamond and pearl trefoil ring, mounted in silver and gold
58. Art Deco diamond panel and cultured pearl ten-row bracelet
59. Pair of mabé pearl and diamond earrings, each pearl measuring approx 18.00mm in diameter

“ LIFE ISN'T PERFECT,
BUT YOUR ACCESSORIES
CAN BE. ”



THIS PAGE

60. *Antique diamond
three-row half-hoop ring,
mounted in gold*

61. *18ct gold, platinum
and diamond eternity ring
by Oscar Heyman*

OPPOSITE PAGE

62. *Antique pear-shaped
diamond crossover ring by
Tiffany, mounted in gold*





OPPOSITE PAGE

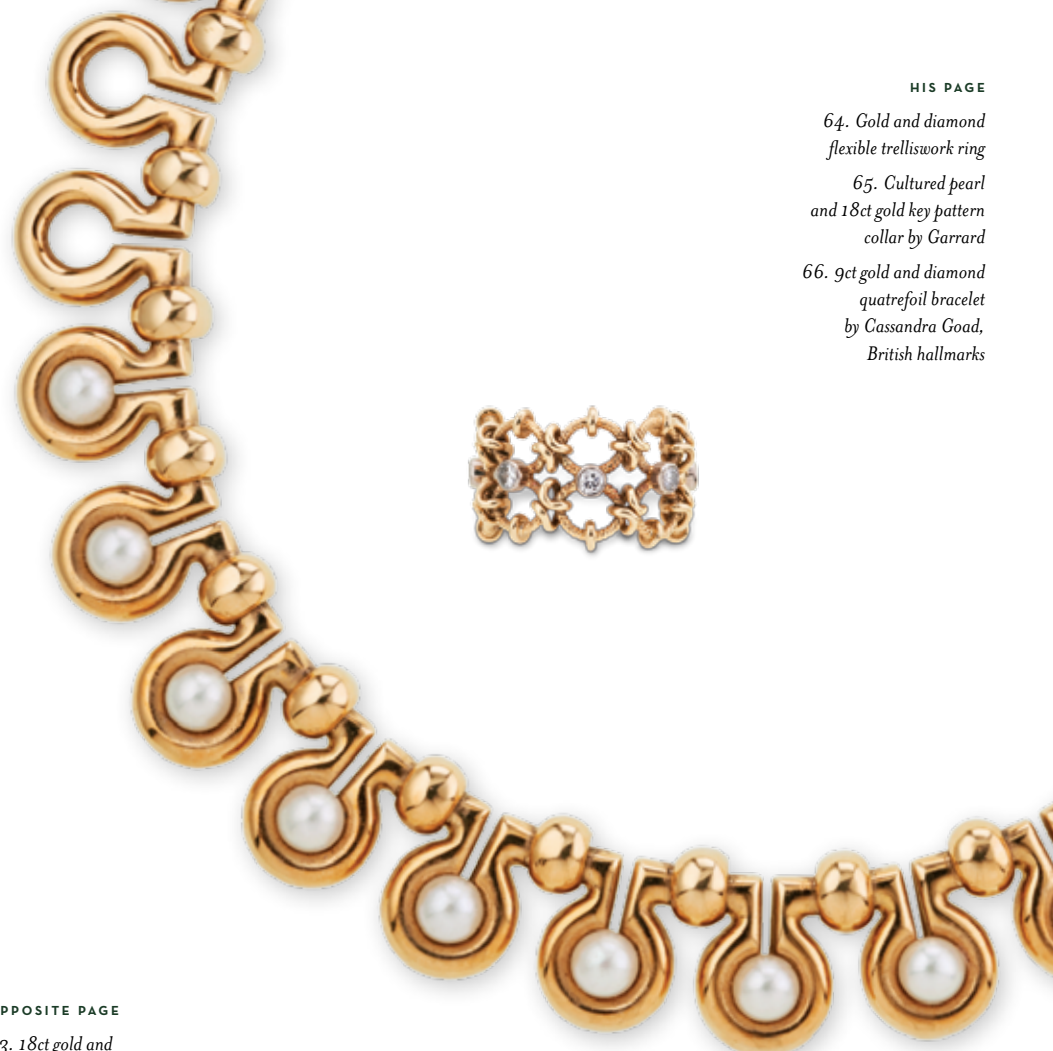
63. 18ct gold and diamond breaking wave bracelet by Cartier, Swiss marks

HIS PAGE

64. Gold and diamond flexible trelliswork ring

65. Cultured pearl and 18ct gold key pattern collar by Garrard

66. 9ct gold and diamond quatrefoil bracelet by Cassandra Goad, British hallmarks





THIS PAGE

67. Pair of diamond and gold leaf spray earclips by Vourakis

68. Antique textured gold and diamond snake ring, the diamond weighing approx 0.85ct

69. Pair of yellow gold and diamond chrysanthemum cufflinks



OPPOSITE PAGE

70. 18ct gold and diamond flowerhead bracelet by Kutchinsky, British hallmarks





OPPOSITE PAGE

71. 18ct rose and yellow gold demi-lune segment bracelet, French marks

THIS PAGE

72. Polished yellow gold, sapphire and diamond wreath brooch by Bancelin, French marks

73. Oval Ceylon sapphire and diamond cluster ring, the sapphire weighing 4.65cts, mounted in silver and gold

74. 18ct gold saxophone brooch



THIS PAGE

75. Edwardian
vari-coloured zircon and
diamond snowflake brooch,
mounted in all gold

OPPOSITE PAGE

76. Yellow and blue
heart-shaped sapphire
and diamond crossover ring,
mounted in 18ct gold





OPPOSITE PAGE

77. Edwardian fashion-shaped sapphire, stone and vari-coloured enamel fringe necklace, mounted in gold

THIS PAGE

78. Pair of antique diamond tassel earrings, mounted in silver and gold

79. Victorian ruby and diamond running fox brooch, mounted in silver and gold

80. Antique old mine-cut diamond circular cluster ring, mounted in silver and gold



THIS PAGE

- 81. *Antique 9ct gold charm longchain*
- 82. *Engraved gold rectangular locket on oval amethyst and gold trace neckchain*
- 83. *9ct gold 'A' pendant by David Morris on plain gold chain*
- 84. *Antique diamond and chrysoprase heart brooch/pendant, mounted in silver and gold*
- 85. *Victorian ruby and diamond fox mask brooch, mounted in silver and gold*



OPPOSITE PAGE

- 86. *Antique diamond and cabochon ruby lizard brooch, mounted in silver with gold fittings*





OPPOSITE PAGE

87. Pair of diamond leaf and briolette aquamarine ear-pendants, the aquamarines weighing 20.67cts in total, mounted in 18ct white gold

THIS PAGE

88. Pair of pear-shaped aquamarine and diamond ear-pendants

89. Square and step-cut aquamarine and diamond bracelet, mounted in 18ct white gold

90. Edwardian oval aquamarine and diamond cocktail ring



THIS PAGE

91. *Antique cushion-shaped amethyst and diamond cluster pendant with drop terminal*

92. *Antique oval amethyst brooch, the amethyst weighing approx. 50.00cts, mounted in gold*

93. *Pair of antique amethyst and rose-cut diamond cluster earstuds, mounted in silver and gold*

OPPOSITE PAGE

94. *Pair of amethyst briolette drop and detachable diamond cluster ear-pendants, mounted in white gold*





OPPOSITE PAGE
95. Pair of amethyst and diamond ribbon loop earclips, mounted in platinum, French import marks

THIS PAGE
96. Pair of circular-cut amethyst earstuds, mounted in gold

97. Briolette aquamarine and diamond bee pendant, mounted in 18ct white gold

98. Antique circular-cut amethyst pendant cross, mounted in gold

99. Amethyst and seed pearl cross pendant, mounted in gold



THIS PAGE

100. Art Deco onyx and diamond dress set, mounted in 18ct white gold, fitted case, one button deficient

101. Edwardian old mine-cut diamond line bracelet, mounted in platinum

102. Art Deco black onyx and rose-cut diamond open circle brooch by Cartier, mounted in platinum



OPPOSITE PAGE

103. Victorian pearl and diamond cluster brooch/pendant, mounted in silver and gold, fitted case





OPPOSITE PAGE

104. Onyx, rock crystal and diamond floral bracelet, mounted in platinum

105. Green garnet and diamond frog bracelet by Benoit de Gorski

106. Art Deco French-cut onyx and diamond alternate section line bracelet, mounted in platinum, dated 1922



THIS PAGE

107. Set of antique green and white enamel cufflinks, mounted in gold

108. Pair of platinum and cabochon sapphire oval cufflinks, backed in 14ct gold

109. Pair of nephrite and ruby oval cufflinks by Chaumet, mounted in 18ct gold

110. Art Deco sapphire, enamel and gold target cluster dress set by Cartier



OPPOSITE PAGE

111. 18ct yellow gold
'Mailon Panthère' neck-
lace by Cartier, French

112. 18ct yellow gold
curb link watch chain
forming 2 bracelets



THIS PAGE

113. Late Victorian
engraved gold and turquoise
crossover bangle

114. 9ct gold circular
and lozenge link bracelet

115. Pair of polished
turquoise and diamond
floral cluster earclips,
mounted in 18ct gold



THIS PAGE

- 116. Step-cut smoky quartz ring, mounted in 9ct gold
- 117. Antique 18ct gold curb link bracelet, 35.8g
- 118. Antique ruby and diamond crescent brooch, mounted in gold
- 119. 15ct gold curb link bracelet with padlock clasp, 21.9g

OPPOSITE PAGE

- 120. 18ct gold and diamond 'Love' bangle by Cartier, fitted case, accompanied by gold screwdriver
- 121. 18ct gold 'Alveare' sprung bangle by Bulgari, 1989





OPPOSITE PAGE

122. 9ct yellow gold bead and barrel-link longchain, 76cm

123. Georgian gold guard chain with barrel clasp, 109cm

124. Coloured pear-shaped diamond longchain, the diamonds weighing 23.29cts in total, mounted in 18ct rose gold

THIS PAGE

125. Pair of oval yellow and pink sapphire and diamond ribbed bangles, mounted in gold

126. Pair of yellow and white diamond hoop ear-pendants, mounted in 18ct yellow and white gold



THIS PAGE

127. Pair of diamond and gold gypsy-hoop earrings

128. Gem-set and diamond 'Allegra' bracelet by Bulgari, mounted in 18ct gold

129. Pear-shaped ruby and enamel stickpin, mounted in gold

130. Pair of vari-coloured sapphire and diamond two-stone ear-pendants, mounted in gold

OPPOSITE PAGE

131. Renaissance Revival gold and gem-set bracelet of beaded openwork links





OPPOSITE PAGE

132. Antique Essex crystal reverse intaglio Dachshund brooch, with diamond-set gold mount



THIS PAGE

133. Pair of 9ct gold and enamel playing card cufflinks depicting the four aces

134. Pair of Art Nouveau gold and cushion-shaped ruby cufflinks by Tiffany & Co

135. Pair of 18ct gold engine-turned rectangular cufflinks

136. Antique 18ct gold twin fox mask stock pin, fitted case

137. Pair of 14ct gold engine-turned circular cufflinks by Cartier, partially numbered



THIS PAGE

138. *Antique diamond and green enamel flying duck brooch, mounted in silver and gold*

139. *Set of interchangeable hardstone and gold baton cufflinks by Boucheron, fitted case*

BACK COVER

140. *Contemporary diamond anemone ring, mounted in 18ct white gold*





HUMPHREY BUTLER LTD

40/41 PALL MALL, LONDON SW1Y 5JG

TELEPHONE +44 (0)20 7839 3193 FAX +44 (0)20 7930 5943

HUMPHREY@HUMPHREYBUTLER.COM

WWW.HUMPHREYBUTLER.COM