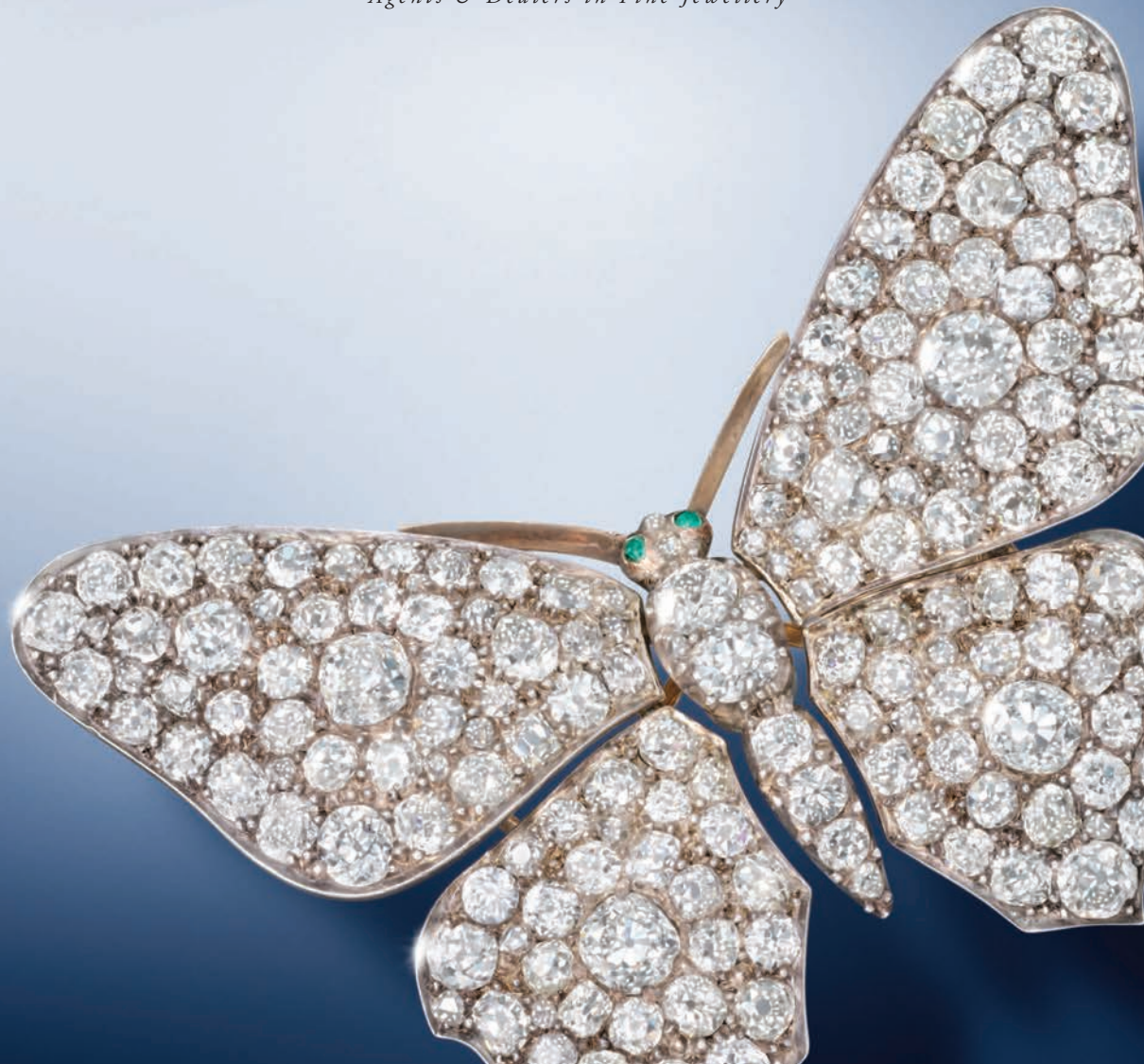


HUMPHREY BUTLER

Agents & Dealers in Fine Jewellery



HUMPHREY BUTLER

Agents & Dealers in Fine Jewellery



HUMPHREY BUTLER LTD

40/41 PALL MALL, LONDON SW1Y 5JG

TELEPHONE +44 (0)20 7839 3193 FAX +44 (0)20 7930 5943

WWW.HUMPHREYBUTLER.COM

HUMPHREY@HUMPHREYBUTLER.COM



THE TWELVE MONTHS' TRADING THAT ENDED IN March of this year proved to be the most successful in the firm's history. In terms of the property sold on behalf of private families and some substantial purchases made at the request of individual investors, we were hugely gratified that clients are still prepared to put their faith in a small business which can provide a more personal and often speedier service than auction houses or larger enterprises. Our expertise and discretion can still be relied on and as always we can provide valuations of family jewellery whether it be for insurance, probate or division.

This year's brochure contains the normal broad range of pieces currently in stock. The diamond butterfly with its wings en tremblant that graces the cover is as good an example of Victorian jewellery as I have seen, while the ribbon bow brooch on page 5 and the delicate velvet and diamond necklace by Cartier on page 17 exemplify the more delicate lines of the Edwardian era and the Belle Epoque. The Art Deco period is well represented with three further diamond pieces by Cartier leading the charge, a pair of dramatic chandelier earrings, a gorgeous pair of ribbon clips and a lovely wide openwork bracelet that can be worn in the hair as a bandeau by those who want to dress for dinner a la Downtown Abbey. Elsewhere I hope there is something for everyone: sailors, animal lovers, coloured stone enthusiasts and even old romantics should find a piece to suit and in view of our current surfeit of rings at all price levels, please encourage engaged couples to beat a path to our door.

COVER

1. Victorian diamond butterfly brooch mounted en tremblant in silver and gold, with hairpin fitting, in fitted case

We are happy to undertake repair work, cleaning, restringing and engraving while our designer contacts can provide excellent ideas for revamping slightly outdated pieces of family jewellery. Equally, we can assist potential buyers in searching for specific items and stones, and we always hold a selection of unmounted diamonds which can then be set to a client's required design for an engagement ring.

All our stock can be found on our newly revamped website at www.humphreybutler.com and appointments can be made to view the jewellery here in Pall Mall where we are able to deal with requests at all levels at consistently competitive rates. We provide signet rings, gold chains, penknives, tiepins and a variety of different cufflinks and silverware, so we can nearly always find a solution for those looking for presents to mark a specific occasion. Whatever you are after, please just ask. We will do our very best to come up with the answer.

We are also now responsible for the trophies at eight of the most important days in the flat racing calendar - the Newmarket Guineas meeting, Royal Ascot week and QIPCO Champions Day again at Ascot - and would be delighted to accept further commissions. The glorious silver gilt cup illustrated in the frontispiece provided a highlight of our summer when it appeared in timely fashion in a provincial auction. We had been asked by the sponsors of Ascot's King George VI & Queen Elizabeth Stakes to find a suitable trophy and we were delighted to be able to provide them with an appropriate and highly satisfying solution by buying for them this wonderful example which had first been presented at Royal Ascot in 1913 as the King's Vase.

OPPOSITE PAGE

2. Belle Epoque diamond openwork ribbon bow brooch mounted in platinum





THIS PAGE

3. Emerald-cut diamond single-stone ring with brilliant and baguette-cut diamond crossover shoulders to the platinum hoop, the diamond weighing 2.03cts, D colour, VS1 clarity

4. Brilliant-cut diamond single-stone ring with baguette-cut diamond split shoulders, the diamond weighing 2.12cts, E colour, VS1 clarity

OPPOSITE PAGE

5. Diamond and black onyx "Panther" necklace mounted in 18ct white gold by Cartier



THIS PAGE
& OPPOSITE PAGE

6. Art Deco brilliant and
baguette-cut diamond
double-clip brooch of
stylised ribbon fan design



THIS PAGE 7. Pair of pear-shaped & old-cut diamond ear-pendants, mounted in 18ct white gold 8. Edwardian diamond line and collet bracelet 9. Antique pearl & diamond openwork bracelet mounted in silver and gold, French 10. Diamond pavé and channel-set two-row eternity ring, size N
OPPOSITE PAGE 11. Pair of Art Deco diamond chandelier ear-pendants by Cartier London





THIS PAGE 12. Victorian diamond heart cluster pendant set with a central square-cut emerald, mounted in silver and gold 13. Diamond tapering lattice-work bracelet set with a central band of eight graduated brilliant-cut diamond collets, mounted in platinum

OPPOSITE PAGE 14. Antique diamond rivière necklace comprising sixty old-cut diamonds mounted in silver and gold, approx. 4Octs in total



OPPOSITE PAGE

18. Art Deco diamond
openwork bracelet/
bandeau by Cartier



THIS PAGE

15. Pair of diamond
openwork leaf and collet
cluster earclips

16. Pair of Art Deco
brilliant and baguette-
cut diamond treble clef
earstuds

17. Brilliant and
baguette-cut diamond
bow tie bracelet





THIS PAGE 19. Art Deco diamond line bracelet with black onyx baton detail
20. Art Deco diamond and black onyx zigzag bracelet 21. Art Deco polished platinum and diamond bracelet
OPPOSITE PAGE 22. Edwardian black velvet necklace enhanced
by a series of diamond flower, leaf & wreath motifs, by Cartier, circa 1906





THIS PAGE

23. Victorian cabochon ruby, emerald and diamond double cluster ring mounted in gold

OPPOSITE PAGE

27. Art Deco emerald and diamond square panel ring

28. Edwardian square-cut emerald ring with diamond buckle shoulders

OPPOSITE PAGE

24. Diamond, sapphire & emerald lozenge-shaped cluster ring

25. Edwardian emerald and diamond tapering line bracelet mounted in platinum, French

26. Art Deco calibre-cut emerald and diamond bracelet



THIS PAGE

29. Pair of circular-cut sapphire & diamond leaf, scroll and collet openwork ear-pendants

30. Art Deco cabochon sapphire and diamond buckle link bracelet, French

31. Cushion-shaped sapphire single-stone ring, the sapphire weighing 3.20cts with diamond three-stone shoulders to the white gold hoop



OPPOSITE PAGE

32. Pair of Art Deco diamond ribbon and scroll earclips by Cartier Paris, with adaptable brooch clip fittings



THIS PAGE

33. Pair of Ceylon sapphire and diamond scroll earclips of stylised question mark design, in 14ct white gold

OPPOSITE PAGE

34. Rectangular-cut sapphire and old-cut diamond three-stone ring

35. Oval-cut sapphire and diamond tapering floral fringe necklace



THIS PAGE 36. Art Deco calibré-cut sapphire and diamond half-hoop ring mounted in platinum 37. Calibré-cut sapphire line bracelet, mounted in 18ct white gold 38. Diamond & sapphire cocktail ring, the central pear-shaped diamond weighing 1.66cts, E colour, VS2 clarity with calibre-cut sapphire detail **OPPOSITE PAGE** 39. Pair of brilliant and baguette-cut diamond wing & tassel ear-pendants





THIS PAGE 40. Art Deco sapphire and diamond cocktail ring of hammerhead design mounted in platinum
 41. Art Deco calibre-cut sapphire and brilliant-cut diamond ribbon bow brooch
 42. Art Deco sapphire & diamond ribbon elliptical panel brooch mounted in platinum, French
 43. Art Deco sapphire and diamond openwork oblong panel brooch
OPPOSITE PAGE 44. Art Deco cushion-shaped Burmese sapphire single-stone ring with triangular-cut diamond shoulders, the sapphire weighing 4.76cts



THIS PAGE 45. Pair of brilliant-cut diamond and cushion-shaped ruby chandelier ear-pendants, the rubies weighing 3.47cts in total 46. Art Deco diamond and ruby arrowhead cocktail ring 47. Circular-cut aquamarine and ruby cocktail ring mounted in white gold by Wolfe & Co 48. Diamond line necklace composed of ninety-one circular-cut diamond collets mounted in 18ct white gold, total weight 9.95cts
OPPOSITE PAGE 49. Art Deco ruby and diamond panel bracelet mounted in platinum, French





THIS PAGE 50. Art Deco Burmese ruby and brilliant & baguette-cut diamond ribbon loop & spray brooch 51. Edwardian cushion-shaped ruby and diamond three-stone ring mounted in platinum 52. Ruby and diamond bombé cocktail ring mounted in gold 53. Calibré-cut ruby and diamond bracelet, the three rows of invisibly-set rubies bordered by undulating lines of small diamonds **OPPOSITE PAGE** 54. Belle Époque diamond and ruby openwork ribbon loop brooch in the garland style, suspending three navette-cut diamond drops





OPPOSITE PAGE
61. Antique diamond
frog brooch with ruby eyes
mounted in silver and gold

THIS PAGE
59. Old mine diamond
three-stone ring mounted
in gold, the central dia-
mond weighing 1.61ct
60. Antique cushion-
shaped diamond cluster
ring with split shoulders
to the gold hoop



THIS PAGE
55. Antique diamond
horse brooch mounted in
silver and gold
56. Pavé-set diamond
piglet pendant
57. Antique diamond
marquise cluster ring, the
central oval-cut diamond
weighing 2.16cts
58. Victorian diamond
three-stone carved
half-hoop ring mounted
in gold, the cushion-
shaped diamonds weighing
5.19cts in total





OPPOSITE PAGE

62. Antique diamond collet & trefoil bracelet converting to a necklace and head ornament, mounted in silver and gold, in fitted case by Fontana Freres

63. Antique diamond oval cluster ring mounted in silver and gold

THIS PAGE

64. Antique old-cut diamond crescent brooch with trefoil points, mounted in silver and gold

65. Antique diamond and topaz openwork harp brooch mounted in gold





OPPOSITE PAGE

66. Edwardian
pear-shaped amethyst
and diamond pendant
necklace



THIS PAGE

67. Edwardian diamond
openwork octafoil cluster
brooch pendant

68. Pavé-set diamond
disc pendant of target
design, mounted
in blackened silver

69. Antique amethyst
& diamond oval cluster
brooch pendant mounted
in silver and gold





THIS PAGE 70. Art Deco kite-shaped aquamarine and diamond clip brooch of fabric design

OPPOSITE PAGE 71. Large rectangular-cut aquamarine single-stone ring of 50.71cts in heavy platinum mount, signed by Boodles

WWW.HUMPHREY BUTLER.COM





OPPOSITE PAGE

72. Pair of gold, ruby and diamond flowerhead earrings, circa 1950

73. Pair of 18ct yellow gold and diamond thistle earclips by Tiffany Sch-lumberger

74. 18ct gold chevron and fabric fringe necklace, French

THIS PAGE

75. Victorian graduated cushion-shaped ruby five-stone carved half-hoop ring mounted gold



THIS PAGE 76. Antique diamond circular cluster ring, the central diamond weighing 2.32cts in a micro-set surround, mounted in gold 77. 18ct gold brick-pattern bracelet by Tiffany with sapphire and diamond detail to the buckle clasp 78. Pair of diamond & gold twisted rope knotted earstuds

OPPOSITE PAGE 79. Pair of 18ct yellow gold and diamond flower earclips by Boucheron





OPPOSITE PAGE

80. Victorian half-pearl diamond and gold star cluster necklace on gold snake pattern chain, forming a pendant and a pair of ear-pendants

THIS PAGE

81. Pair of contemporary naturalistic gold & diamond cluster earrings of stylised coral design, by John Donald



THIS PAGE

82. Yellow sapphire and diamond oval cluster ring mounted in 18ct yellow gold

83. Citrine and diamond cocktail ring in gold twisted rope mount

84. Rectangular-cut citrine single-stone ring mounted in gold

OPPOSITE PAGE

85. Pair of citrine ear-pendants with diamond-set arrowhead claws and hook fittings





THIS PAGE

86. Gold and gem-set novelty rabbit brooch by Cartier

87. Pair of gold, diamond and emerald stylised dolphin bangles by David Webb

OPPOSITE PAGE

88. Antique citrine and gold fringe necklace with beadwork detail





THIS PAGE

89. 9ct yellow gold
curb-link bracelet
with padlock clasp

90. 18ct gold oval
link neckchain with
heart-shaped pendant
by Tiffany & Co

OPPOSITE PAGE

91. 18ct gold ram's
head hinged bangle
by Lalaounis



THIS PAGE

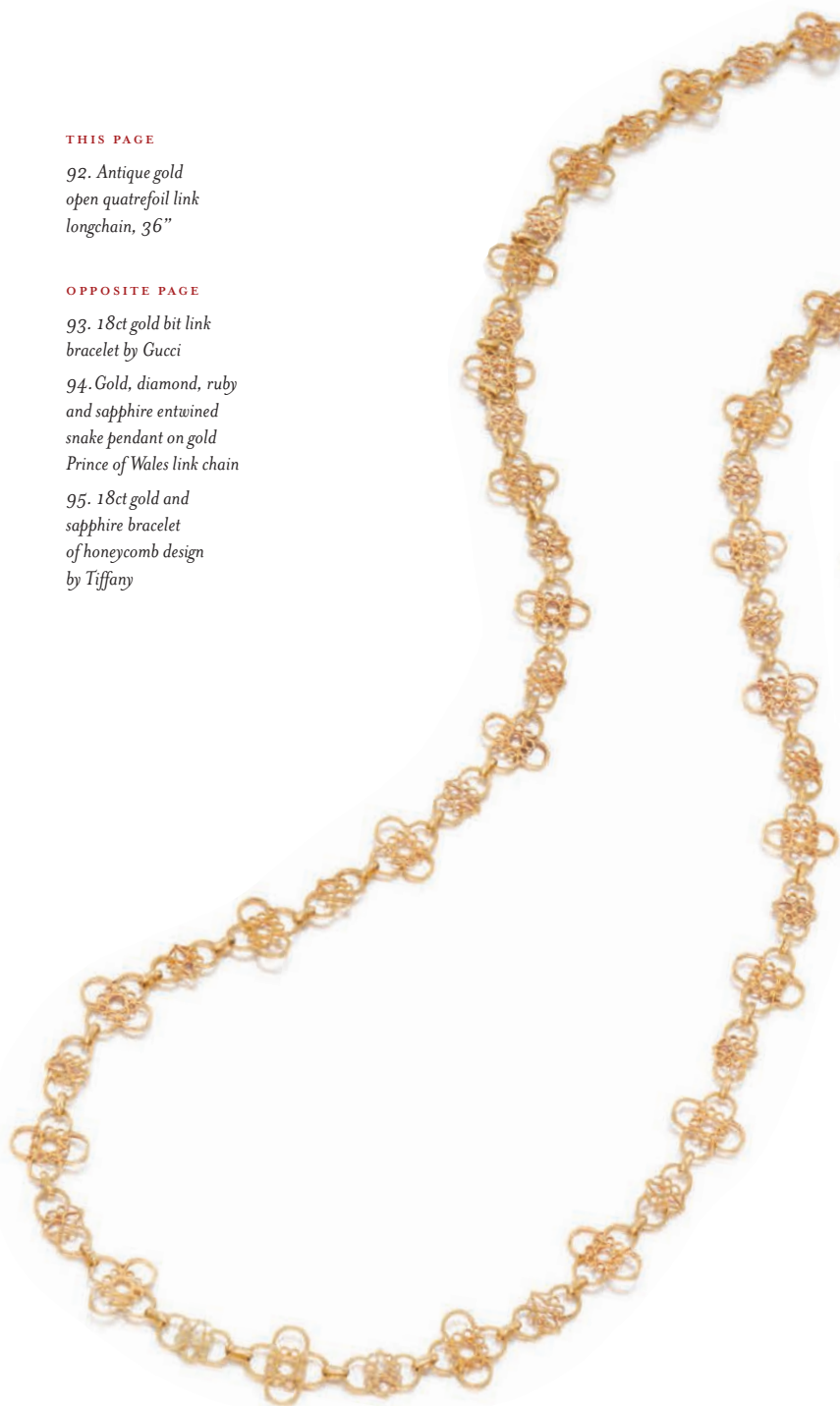
92. Antique gold
open quatrefoil link
longchain, 36"

OPPOSITE PAGE

93. 18ct gold bit link
bracelet by Gucci

94. Gold, diamond, ruby
and sapphire entwined
snake pendant on gold
Prince of Wales link chain

95. 18ct gold and
sapphire bracelet
of honeycomb design
by Tiffany





THIS PAGE

96. Sapphire, diamond and gold bombe cocktail ring by Rene Boivin, the central cushion-shaped Burmese sapphire weighing 2.59cts

97. Victorian sapphire and diamond three-stone carved half-hoop ring, the central cushion-shaped sapphire weighing 2.97cts, mounted in gold

98. Edwardian blue & white enamel and pearl bracelet mounted in gold



OPPOSITE PAGE

99. Antique gold, sapphire and pearl trellis-work bracelet





THIS PAGE
100. Carved ruby,
sapphire, emerald and
diamond "tutti frutti"
necklace with matching
earclips en suite



THIS PAGE 101. Antique moonstone, demantoid garnet and diamond heart pendant

102. Antique moonstone, ruby and diamond heart pendant

103. Natural button pearl and diamond cluster pendant with drop pearl & diamond collet terminal

104. Pair of moonstone and ruby circular cluster earstuds mounted in all gold

OPPOSITE PAGE 105. Antique rose-cut diamond circular miniature brooch mounted in gold





OPPOSITE PAGE 106. Victorian smoky quartz beetle pendant

THIS PAGE 107. Antique drop-shaped cabochon garnet earrings with half-pearl & gold detail

108. Antique cabochon garnet, diamond and gold Gothic cross pendant with heart runner

109. Rectangular citrine and gold wirework cocktail ring, French



THIS PAGE

110. Pair of Art Deco gold and cabochon sapphire cufflinks of stylised snaffle design, French

111. Pair of 18ct gold oval cufflinks, each set to the centre with a cabochon sapphire, numbered

112. Pair of 14ct yellow gold and sapphire square panel cufflinks by Tiffany & Co

113. Victorian blue enamel and rose-cut diamond pocket watch mounted in yellow gold



OPPOSITE PAGE

114. 18ct gold sailing boat brooch, French





OPPOSITE PAGE

115. Silver gilt basket weave rectangular snuff box by John Shaw, Birmingham 1812

116. Pair of white enamel & gold stripe pattern oval cufflinks embellished with two bands of calibre-cut rubies

117. Pair of gold and red enamel leaf pattern concave oval cufflinks

118. Pair of 18ct yellow gold and enamel playing card cufflinks



THIS PAGE

119. Pair of 18ct yellow gold and blue & white enamel rectangular panel cufflinks

120. Pair of blue & white enamel striped oval cufflinks mounted in 18ct yellow gold

121. Antique blue enamel ball watch with diamond and gold swag & wreath detail



OPPOSITE PAGE

127. Carved sapphire
cameo stickpin with
diamond detail, French

128. Victorian diamond
partridge stickpin with
cabochon ruby eye

129. A diamond, emerald
and sapphire reversible
winning post stickpin,
French



THIS PAGE

122. Pair of 18ct white
gold and diamond
crossover hoop earrings

123. Art Deco black onyx
and diamond panel ring,
French

124. Pair of frosted
rock crystal, diamond
& calibré-cut black onyx
target cluster cufflinks
in yellow gold

125. Art Deco diamond
and black onyx elliptical
bar brooch

126. Pair of Art Deco
frosted rock crystal,
diamond & black enamel
circular cufflinks mounted
in 18ct white gold





THIS PAGE

130. Edwardian diamond wagon wheel brooch pendant



HUMPHREY BUTLER LTD

40/41 PALL MALL, LONDON SW1Y 5JG
TELEPHONE +44 (0)20 7839 3193 FAX +44 (0)20 7930 5943

WWW.HUMPHREYBUTLER.COM
HUMPHREY@HUMPHREYBUTLER.COM

