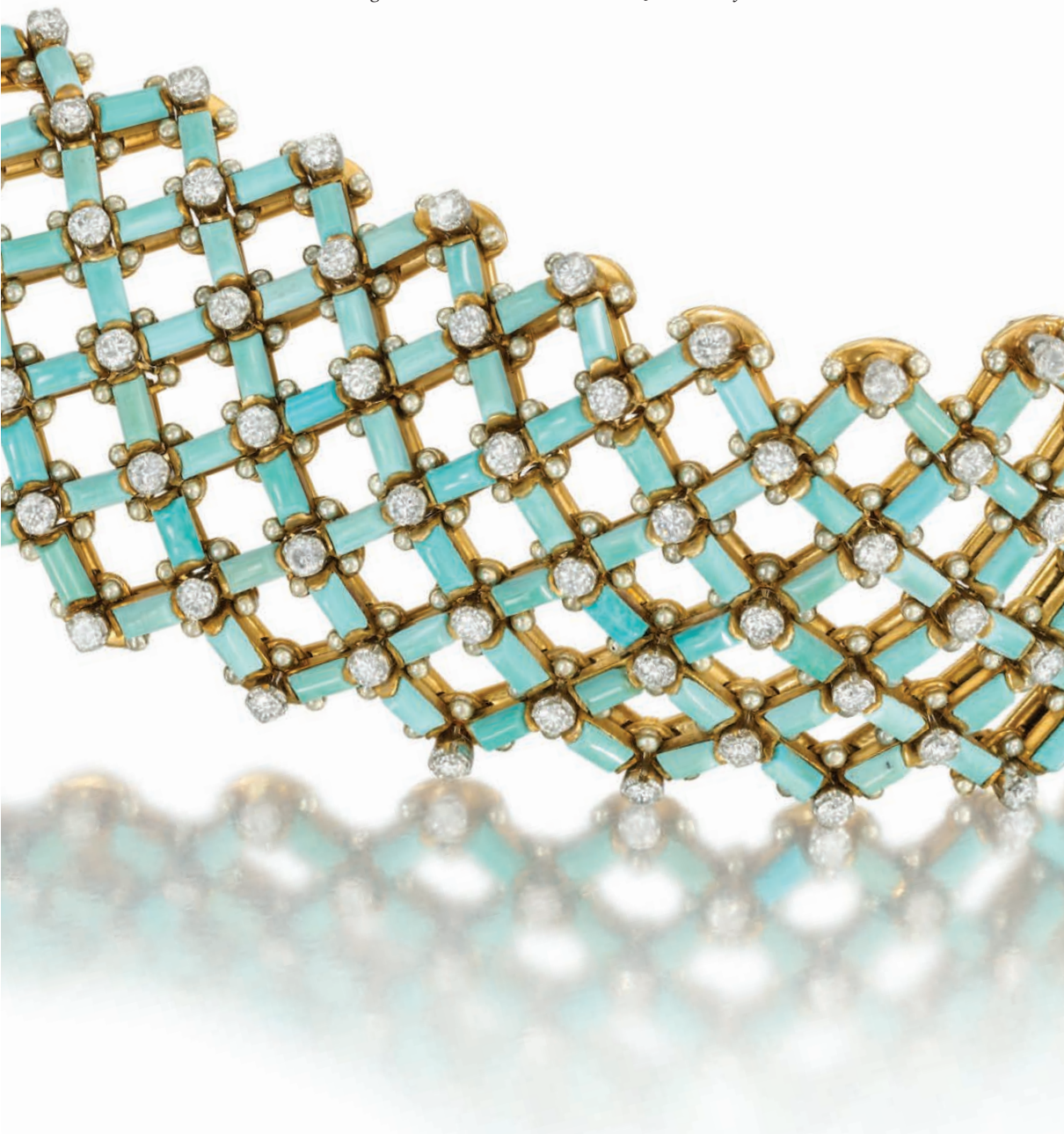


# HUMPHREY BUTLER

*Agents & Dealers in Fine Jewellery*



# HUMPHREY BUTLER

*Agents & Dealers in Fine Jewellery*



HUMPHREY BUTLER LTD

40/41 PALL MALL, LONDON SW1Y 5JG

TELEPHONE +44 (0)20 7839 3193 FAX +44 (0)20 7930 5943

[WWW.HUMPHREYBUTLER.COM](http://WWW.HUMPHREYBUTLER.COM)

[HUMPHREY@HUMPHREYBUTLER.COM](mailto:HUMPHREY@HUMPHREYBUTLER.COM)

---

2013 HAS PROVIDED THE SINGLE MOST IMPORTANT LANDMARK IN THE history of Humphrey Butler Ltd as we bade farewell to our investment fund Dazzling Capital and therefore found ourselves fully independent for the first time in our fourteen years. This hopefully proves that the market still has room for a boutique dealership which can provide a full range of services to clients from all over the globe and underlines our position as a highly viable alternative to the auction rooms, where the sale calendar is becoming more limited and commission charges less and less appealing. Potential vendors, be they private individuals or professional advisers can also benefit from the firm's expertise and discretion as we offer valuations for family division, insurance and probate purposes, together with advice on tax and inheritance issues.

As ever I hope that prospective buyers will appreciate the broad mix of jewellery represented here. The standard is set by the sumptuous pearl and diamond tiara on page 3 which stood out when worn at the Swedish royal wedding earlier this year, while the exquisite square-cut sapphire and diamond bracelet flies the flag for the Art Deco period. For fans of the flamboyant, the French diamond cocktail ring by Messika gives a whole new slant to the word knuckleduster, while the cabochon ruby and diamond necklace with its matching earrings would grace any red carpet occasion. I have always been a supporter of nineteenth century jewellery and while the diamond padlock exemplifies early Victorian workmanship at its best, the malachite and gold suite shows to what extent styles changed over the next fifty years. All these pieces hopefully combine taste and quality, not always the most understated, but beguiling and essentially wearable – even the Scottie dog bracelet!

COVER 1. *Antique turquoise and diamond open lattice-work bracelet mounted in 18ct yellow gold*  
PREVIOUS PAGE 2. *18ct gold cockerel brooch enhanced by a single pearl, by Nava Nencins*  
OPPOSITE PAGE 3. *Edwardian natural pearl and diamond openwork tiara*

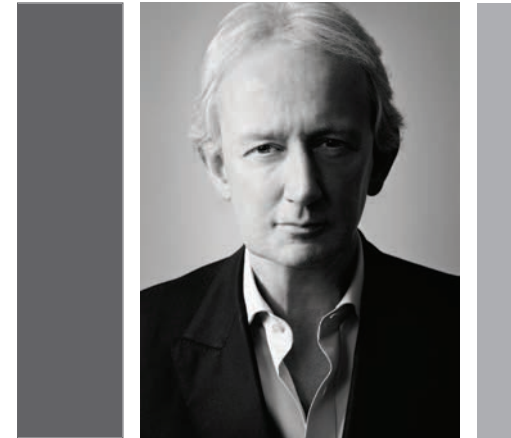




THIS PAGE

4. Cultured pearl three-row necklace with diamond target cluster clasp set to the centre with an old mine-cut diamond weighing approx 1.25ct in a three-row diamond surround

---



We are happy to undertake repair work, cleaning, restringing and engraving while our designer contacts can always provide excellent ideas for revamping slightly outdated pieces of family jewellery. Equally, we can assist potential buyers in searching for specific items and stones, and we always hold a selection of unmounted diamonds which can then be set to a client's required design, particularly with regard to engagement rings. We are also now responsible for the trophies at eight of the most important days in the flat racing calendar - the Newmarket Guineas meeting, Royal Ascot week and QIPCO Champions Day again at Ascot - and would be delighted to accept further commissions.

All our stock can be found on our website at [www.humphreybutler.com](http://www.humphreybutler.com) and appointments can be made to view the jewellery here in Pall Mall, where we are able to deal with requests at all levels at consistently competitive rates. We provide signet rings, gold chains, penknives, tiepins, a variety of different cufflinks and silverware, so we can nearly always find a solution for those looking for presents to mark a specific occasion. Whatever you are after, please just ask. We will do our very best to come up with the answer.

OPPOSITE PAGE

*5. Diamond openwork hinged cuff bangle designed as a trellis work of ribbon loops enhanced by three central rows of brilliant-cut diamond collets, mounted in 18ct white gold*



THIS PAGE

6. Lady's Art Deco diamond-set cocktail watch, the rectangular case with stepped baguette-cut shoulders to the stylised rectangular link bracelet

7. Emerald-cut diamond single-stone ring with baguette-cut diamond shoulders to the plain hoop, the diamond weighing 4.54cts, K colour, SI1 clarity

OPPOSITE PAGE

8. Cushion-shaped diamond weighing 3.56cts, G colour, VS1 Clarity





OPPOSITE PAGE  
9. *Diamond bombe  
cocktail ring mounted  
in 18ct white gold,  
by Messika, French*



THIS PAGE  
10. *Art Deco diamond  
openwork rectangular  
panel link bracelet,  
mounted in white gold*

11. *Brilliant-cut diamond  
line bracelet mounted in  
18ct white gold, French*

12. *Art Deco brilliant  
and baguette-cut diamond  
three-stone link bracelet  
mounted in platinum*



THIS PAGE

13. A diamond pierced rectangular link necklace with bar link dividers, mounted in white gold

OPPOSITE PAGE

14. Diamond bracelet composed of three articulated openwork links each with four barrel motifs to the centre, diamond open circle links between







OPPOSITE PAGE AND THIS PAGE

15. Edwardian diamond trefoil and collet necklace, the detachable rosette centre suspending two similar tassels, the tassels forming ear-pendants, mounted in platinum



THIS PAGE 16. An exquisite antique diamond pendant cross, mounted in silver and gold, in fitted case  
OPPOSITE PAGE 17. Pair of Edwardian diamond openwork chandelier ear-pendants mounted in platinum



OPPOSITE PAGE

18. Pair of cushion-shaped diamond ear-pendants weighing 4.16cts and 4.12ct respectively, each suspended from a graduated diamond three-stone chain, mounted in 18ct white gold



THIS PAGE

19. Diamond three-stone ring, the central brilliant-cut diamond weighing 0.71ct flanked by two pear-shaped diamonds to the plain platinum hoop



20. Emerald-cut diamond single-stone ring, the diamond weighing 3.13cts, H colour, VS1 clarity, with tapered baguette-cut diamond shoulders to the plain platinum hoop

21. Pair of diamond single-stone earstuds, weighing 3.37ct and 3.51ct

22. Pair of diamond two-stone drop earrings, the pear-shaped diamonds weighing 2.40cts and 1.82ct respectively each suspended from a brilliant-cut diamond, mounted in 18ct white gold





THIS PAGE

*23. Art Deco diamond and emerald ribbon bow brooch, the diamond-set mount embellished with two bands of French-cut emeralds*

OPPOSITE PAGE

*24. Emerald single-stone ring, the cushion-cut emerald weighing 10.68cts with trilliant-cut diamond shoulders, mounted in platinum*





OPPOSITE PAGE

25. Art Deco old mine-cut diamond and platinum architectural ring with diamond-set shank

THIS PAGE

26. Calibré-cut emerald and brilliant-cut diamond alternate three-stone bar link bracelet mounted in platinum

27. Pair of emerald and diamond snowflake earclips, by Cartier, numbered

28. Rectangular-cut emerald ring with baguette-cut diamond shoulders, the emerald weighing 3.13cts



THIS PAGE

29. Pair of Art Deco diamond and pearl openwork clip brooches of chevron design, by Raymond Yard, mounted in platinum

30. Pair of brilliant and baguette-cut diamond earclips of scrolled winged design

31. Brilliant and baguette-cut diamond alternate section line bracelet



OPPOSITE PAGE

32. Pair of diamond single-stone drop ear-pendants, the old mine-cut diamonds weighing 1.60ct and 1.47ct suspended from a diamond-set collet





OPPOSITE PAGE 33. Pair of diamond floral spray clip brooches, each designed as a brilliant and baguette-cut diamond stylised chrysanthemum, mounted in white gold THIS PAGE 34. A pair of diamond leaf and cluster ear-pendants



THIS PAGE

35. Victorian pearl and diamond fringe necklace with star motifs mounted in silver and gold, in fitted case by Hunt & Roskell

36. Pair of brilliant-cut diamond double flower-head cluster ear-pendants



OPPOSITE PAGE

37. Art Deco diamond openwork panel bracelet, mounted in platinum, French







THIS PAGE  
38. Art Deco cabochon  
ruby and diamond cluster  
necklace, with a pair of  
cabochon ruby and diamond  
trapeze ear-pendants en suite



OPPOSITE PAGE  
39. Art Deco square-cut sapphire and baguette-cut diamond line bracelet, the baguette-cut diamond borders enhanced by small square-cut sapphire points, numbered 8687

THIS PAGE  
40. Art Deco diamond arrowhead clip brooch with baguette-cut diamond detail mounted in platinum, by Cartier, French



THIS PAGE 41. Victorian sapphire, diamond, and pearl lozenge brooch pendant, mounted in silver and gold  
OPPOSITE PAGE 42. Pair of Edwardian diamond ear-pendants of collet and trefoil design mounted in silver and gold



OPPOSITE PAGE  
43. Sapphire single-stone ring, the Ceylon sapphire weighing 9.95cts with baguette-cut diamond shoulders

THIS PAGE  
44. Pair of brilliant-cut diamond and circular-cut sapphire vine cluster earrings with baguette-cut diamond detail, by Gazdar

45. Edwardian sapphire and diamond tassel pendant brooch

46. Art Deco cabochon sapphire and diamond cocktail ring, the diamond and platinum mount set with a sugarloaf cabochon sapphire weighing 8.99cts

47. Rectangular-cut Burmese sapphire ring weighing 7.29cts with baguette-cut diamond shoulders



THIS PAGE

48. Edwardian pear-shaped amethyst and diamond pendant necklace

49. Circular-cut amethyst and brilliant-cut diamond cluster pendant, with a pair of circular-cut ear-pendants with collet tops en suite

OPPOSITE PAGE

50. Antique diamond rivière necklace set with forty-six graduated old mine-cut diamond collets in cut-down settings, mounted in silver and gold





THIS PAGE  
52. Cushion-shaped aquamarine and diamond pendant on an 18ct white gold trace link neckchain

53. Pair of aquamarine, brilliant and baguette-cut diamond ear-pendants, mounted in 18ct white gold

54. Cabochon turquoise and diamond bombé panel bracelet mounted in all gold



OPPOSITE PAGE  
51. Antique diamond padlock brooch set throughout with old mine-cut diamonds enclosing a rock-crystal locket panel, and suspending an antique turquoise and diamond heart cluster motif and a diamond-set key, in a fitted case by Tessier



THIS PAGE 55. Victorian diamond graduated fringe necklace, mounted in silver and gold  
OPPOSITE PAGE 56. Antique diamond flower and leaf spray brooch mounted in silver and gold





THIS PAGE  
57. Pair of jade, black enamel and diamond ear-pendants

58. Belle Epoque square-cut cabochon emerald and diamond cluster stickpin mounted in platinum, circa 1910

59. Cabochon sapphire stickpin mounted in platinum, signed Bailey, Banks & Biddle



OPPOSITE PAGE  
60. Antique sapphire and rose-cut diamond openwork trefoil brooch, mounted in silver and gold







THIS PAGE

62. Pair of blue chalcedony and diamond ear-pendants, mounted in 18ct white gold

63. An engaging ruby, sapphire and diamond stylised bowtie brooch, mounted in 18ct gold

64. Pair of ribbed gold, ruby, sapphire and diamond wing earclips



OPPOSITE PAGE

61. Antique moonstone, ruby and diamond pendant, mounted in silver and gold

THIS PAGE

65. Pair of Edwardian circular-cut diamond and calibre-cut pink spinel alternate section bangles mounted in platinum and gold, each engraved 13 Aug 1908



THIS PAGE

66. Victorian alternate ruby and diamond hinged half-hoop bangle mounted in gold



THIS PAGE  
67. Victorian red and white enamel, diamond and pearl gold necklace

- OPPOSITE PAGE
68. 9ct white gold open oval link bracelet suspending five enamelled foxhunting charms in 9ct yellow gold
69. Yellow gold, enamel and Essex crystal terrier bracelet
70. Gold and gem-set charm bracelet, the chain link bracelet suspending eleven various charms





OPPOSITE PAGE  
71. Art Deco gold, enamel  
and sugarloaf citrine  
bracelet, French

72. Art Deco gold, enamel  
and sugarloaf chalcedony  
bracelet, French

THIS PAGE  
73. Antique black enamel  
and diamond gothic  
pendant cross mounted  
in all gold



THIS PAGE  
74. 19th century enamel  
and diamond openwork  
cruciform brooch mounted  
in all gold

OPPOSITE PAGE  
75. 18ct yellow gold  
multi-link chain, English,  
72", 115g.





OPPOSITE PAGE  
76. 18ct yellow gold  
shackle link longchain,  
22"



THIS PAGE  
77. 18ct yellow gold  
elephant charm bracelet,  
the heavy chain link  
bracelet suspending four  
gold elephant charms of  
varying sizes

78. Pair of gold,  
sapphire and diamond  
concentric circle earclips  
by Theo Fennell





OPPOSITE PAGE  
82. Pair of fire opal and orange sapphire ear-pendants, mounded in 18ct yellow gold

THIS PAGE  
79. Hammered gold flower, heart and leaf spray brooch, embellished with a single brilliant-cut diamond

80. Heavy 18ct yellow gold circular pendant chased with a male lion's head to depict the star sign Leo

81. Gold crucifix pendant



OPPOSITE PAGE

83. 18ct gold fish scale bracelet, the belt buckle terminal with gold wire-work ribbon hinged clasp



THIS PAGE

84. Pair of three-coloured 18ct gold creole hoop earrings of Russian wedding ring design, numbered

85. Pair of gold pierced-bombé earclips of inverted bird's nest design, signed Boucheron Paris

86. Pair of 18ct yellow gold circular bombé earclips of quilted design by Chaumet







THIS PAGE

87. Victorian malachite and gold suite comprising a bracelet, two brooches and a memorial locket pendant, in fitted case

OPPOSITE PAGE

88. Antique garnet, rose-cut diamond and gold hinged crossover bangle of twisted rope design



THIS PAGE

89. 18ct yellow gold double-sided Tudor rose pendant

90. Sapphire and diamond boat-shaped cluster ring

91. Yellow gold bombe cocktail ring of ropework design by Tiffany & Co

92. Antique diamond cluster ring with gold flower and leaf shoulders to the ribbed gold hoop





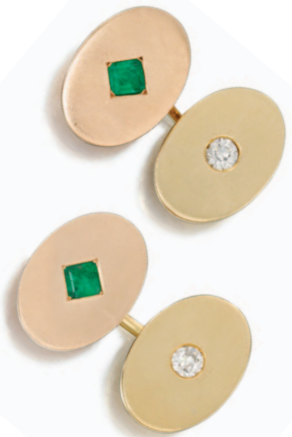
OPPOSITE PAGE  
96. Art Deco engine-  
turned 14ct gold powder  
compact with diamond-set  
push piece



THIS PAGE  
93. A pair of engine-  
turned 14ct gold disc  
cufflinks by Cartier, each  
with cabochon sapphire  
centre

94. 18ct yellow gold,  
cabochon sapphire  
and diamond three-  
stone gypsy ring

95. Pair of 14ct gold,  
emerald and diamond  
oval cufflinks





OPPOSITE PAGE  
97. Pair of Indian  
diamond melon bead  
earrings with onyx  
and diamond chandelier  
mounts



THIS PAGE  
98. Art Deco black  
onyx and diamond  
chequerboard bow brooch  
mounted in platinum,  
French

99. Antique diamond  
circular locket pendant,  
mounted in silver and gold

100. Art Deco onyx and  
diamond dress-set by  
Cartier, composed of a  
pair of onyx and diamond  
circular cluster cufflinks  
and three matching studs,  
in fitted case, signed  
Cartier London





THIS PAGE

101. Blue and white enamel leaping salmon bar brooch, mounted in platinum and gold

102. Edwardian old-mine and rose-cut diamond woodcock bar brooch, mounted in platinum and gold

103. Diamond and wood golf club brooch by Cartier in fitted case

104. Pair of frosted rock crystal and diamond flowerhead earrings

105. Pair of frosted rock crystal and tsavorite garnet flowerhead earrings

106. Pair of frosted rock crystal and amethyst flowerhead earrings



OPPOSITE PAGE

107. White gold and diamond bombé cluster starburst brooch of open wirework design, by Mellerio, French

108. 18ct white gold LOVE bangle by Cartier





THIS PAGE

109. Victorian diamond, pearl and conch pearl shamrock brooch,  
mounted in silver and gold



**HUMPHREY BUTLER LTD**

40/41 PALL MALL, LONDON SW1Y 5JG  
TELEPHONE +44 (0)20 7839 3193 FAX +44 (0)20 7930 5943

WWW.HUMPHREYBUTLER.COM  
HUMPHREY@HUMPHREYBUTLER.COM

**HUMPHREY BUTLER**

*Agents & Dealers in Fine Jewellery*

2013/2014