



HUMPHREY BUTLER

Agents & Dealers in Fine Jewellery

HUMPHREY BUTLER

Agents & Dealers in Fine Jewellery



HUMPHREY BUTLER LTD

40/41 PALL MALL, LONDON SW1Y 5JG

TELEPHONE +44 (0)20 7839 3193 FAX +44 (0)20 7930 5943

WWW.HUMPHREYBUTLER.COM

HUMPHREY@HUMPHREYBUTLER.COM

40/41

PALL MALL

IDENTIFYING MORE WITH OUR OLYMPIC ATHLETES AND RYDER Cup golfers than our economists and politicians, Humphrey Butler Ltd has enjoyed a landmark year. Not only have we bought some outstanding pieces from all periods, but we have then been able to attract buyers from all over the globe and this underlines our position as a highly viable alternative to the auction rooms where sale opportunities are less frequent and commission charges ever more inhibiting. Potential vendors, be they private individuals or professional advisers can also benefit from the firm's expertise and discretion as we offer valuations for family division, insurance and probate purposes, together with advice on tax and inheritance issues.

I hope that prospective buyers will enjoy the range of jewellery illustrated in this, our thirteenth brochure. We have ensured that some of the highlights stand out, from the classic Art Deco lines of the aquamarine and diamond buckle brooch on the cover to the exquisite Edwardian ruby and diamond pendant earrings - the finest of the period that I have seen for a very long time - on page 25. For those who pay scant attention to superstition, the square-cut emerald on page 29 is as close to real gem quality as one can find, while the highly flexible diamond bracelet by Lacloue set with five cabochon sapphires would certainly do justice to Jessica Ennis in her new-found role as the nation's pin-up.

ON COVER AND THIS PAGE

1. Exceptional Art Deco aquamarine and diamond stylised buckle brooch by Cartier London

PREVIOUS PAGE 2. Antique diamond and gem-set flying insect brooch





As ever we are happy to undertake repair work, cleaning, restringing and engraving while our designer contacts can always provide excellent ideas for revamping slightly outdated pieces of family jewellery. Equally, we can assist potential buyers in searching for specific items and stones, and we always hold a selection of unmounted diamonds which can then be set to a client's required design, particularly with regard to engagement rings.

Appointments can be made to view the jewellery from Monday to Friday here in Pall Mall, while all our stock can be found on our website at www.humphreybutler.com. This does not just cover the more glamorous and extravagant end of the market; we are able to deal with requests at all levels at consistently competitive rates. I say it every year but we provide signet rings, gold chains, penknives, tiepins, a variety of different cufflinks and silverware, so we can nearly always find a solution for those looking for presents to mark a specific occasion. Whatever you are after, please just ask the question. We will do our very best to come up with the answer.

*Jewellery takes people's
minds off your wrinkles. Sonja Henie*



THIS PAGE 3. Antique engraved sapphire and rose-cut diamond oval pendant

4. Brilliant, baguette and navette-cut diamond fringe choker necklace

OPPOSITE PAGE 5. Edwardian sapphire and diamond tassel pendant necklace forming brooch





OPPOSITE PAGE 6. Art Deco cabochon sapphire and diamond openwork articulated panel bracelet by Lacloue THIS PAGE 7. Pair of brilliant-cut diamond and circular-cut sapphire vine cluster ear-pendants with baguette-cut diamond detail, by Gazdar



*THIS PAGE 8. Pair of diamond open ribbon-work chandelier ear-pendants
9. Belle Epoque diamond and platinum openwork bracelet, French OPPOSITE PAGE 10. Yellow sapphire and
marquise-cut diamond cocktail ring mounted in platinum, French*





OPPOSITE PAGE 11. Belle Epoque diamond lavalier, suspending two brilliant-cut diamonds weighing approx 4.00cts each THIS PAGE 12. Pair of diamond ear-pendants, each diamond collet chain suspending an old mine-cut diamond weighing 1.26ct and 1.31ct respectively

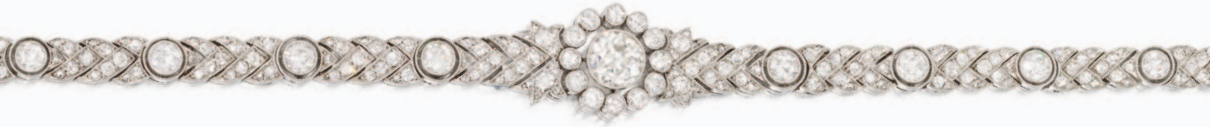


THIS PAGE 13. Baguette-cut diamond line necklace centering on a navette-cut diamond floral cluster OPPOSITE PAGE 14. Pair of late Victorian diamond collet, leaf and ribbon bow openwork ear-pendants, mounted in silver and gold





OPPOSITE PAGE 15. Pair of pear-shaped and baguette-cut diamond ear-pendants, each pear-shaped diamond drop weighing approx 3.00cts THIS PAGE 16. Emerald-cut diamond single-stone ring (2.03cts, D colour, VS1 clarity) with brilliant and baguette-cut diamond crossover shoulders 17. Art Deco navette-cut diamond cluster ring, mounted in platinum 18. Baguette-cut diamond half-eternity ring by Oscar Heyman



*THIS PAGE 19. Belle Epoque diamond line bracelet with circular cluster centre
20. Pair of diamond openwork snowflake cluster earclips mounted in white gold OPPOSITE PAGE 21. Art Deco diamond
and carved rock crystal stylised panel brooch by Cartier*



OPPOSITE PAGE 22. Pair of ruby and diamond drop cluster ear-pendants

THIS PAGE 23. Diamond three-stone half-hoop ring with cluster detail 24. Art Deco brilliant and baguette-cut diamond openwork bracelet, mounted in platinum, French



*THIS PAGE 25. Antique ruby and diamond circular brooch pendant, mounted in silver and gold, in fitted case 26. Brilliant and baguette-cut diamond cravat necklace with baguette-cut diamond furred crossover to the centre 27. Art Deco ruby and diamond ring of stylised bow tie design
OPPOSITE PAGE 28. Pair of exquisite Art Deco Burma ruby and diamond ear-pendants*



OPPOSITE PAGE 29. Antique diamond, rose-cut diamond and pearl openwork wreath brooch, mounted in silver and gold THIS PAGE 30. Antique natural pearl and diamond drop, the pearl measuring approx 19.00mm in length



THIS PAGE 31. Emerald and diamond rectangular cluster ring mounted in platinum
32. Victorian demantoid garnet graduated five-stone carved half-hoop ring mounted in gold 33. Important brilliant-cut diamond ring with calibré-cut emerald and diamond florette detail, the central diamond weighing approx. 3.75cts *OPPOSITE PAGE*
34. Square-cut Colombian emerald ring with baguette-cut diamond shoulders, the emerald weighing 3.10cts



OPPOSITE PAGE 35. Antique emerald and diamond cluster pendant of stylised octafoil design, with brooch and hair comb fitting, mounted in silver and gold THIS PAGE 36. Art Deco cushion-shaped emerald and square-cut diamond half-hoop ring 37. Art Deco diamond and emerald bombé cluster ring, mounted in platinum 38. Calibré-cut sapphire, calibré-cut emerald and single-cut diamond five-row half eternity ring



THIS PAGE 39. Art Deco diamond and rock crystal open circle brooch, the diamond palm front terminals each with calibré-cut emerald detail OPPOSITE PAGE 40. Art Deco frosted rock crystal and diamond brooch pendant with triple tassel terminals, signed Cartier Paris, Londres, New York, no. 1493





OPPOSITE PAGE 41. Lady's Art Deco diamond and black onyx cocktail watch by Cartier, with rose-cut diamond deployant buckle, mounted in gold THIS PAGE 42. Pair of antique diamond tear-drop cluster earrings, mounted in silver and gold 43. Art Deco black onyx and diamond panel ring, French 44. Carved hardstone figure of a seated hippopotamus



THIS PAGE 45. Lady's Art Deco emerald and diamond cocktail watch

46. Lady's diamond-set cocktail watch by Kelbert OPPOSITE PAGE 47. Antique diamond coiled snake brooch with emerald-set head, mounted in silver and gold, in fitted case





OPPOSITE PAGE 48. Edwardian cushion-shaped aquamarine and diamond cluster necklace in the garland style, mounted in silver and gold, in fitted case by London & Ryder THIS PAGE 49. Pair of briolette-cut aquamarine and diamond chain ear-pendants 50. Pair of pear-shaped aquamarine ear-pendants with diamond ribbon loop and collet mounts





*THIS PAGE 51. Pair of brilliant and baguette-cut diamond stylised wing earclips
52. Blue and white paste openwork bracelet, mounted in silver OPPOSITE PAGE 53. Rectangular-cut aquamarine
single-stone ring with diamond split shoulders*





OPPOSITE PAGE 54. Edwardian diamond openwork snowflake brooch pendant, mounted in platinum THIS PAGE 55. Edwardian pavé-set diamond terrier brooch with ruby eye, mounted in silver and gold 56. Antique diamond bird brooch, mounted in silver and gold 57. Antique diamond shamrock brooch, mounted in silver and gold



*THIS PAGE 58. Enamel and diamond horse and jockey brooch
59. Art Deco sapphire and diamond jabot pin designed as a key 60. Pair of cabochon star sapphire cufflinks, mounted in platinum
OPPOSITE PAGE 61. Edwardian amethyst and diamond cluster brooch in the garland style*



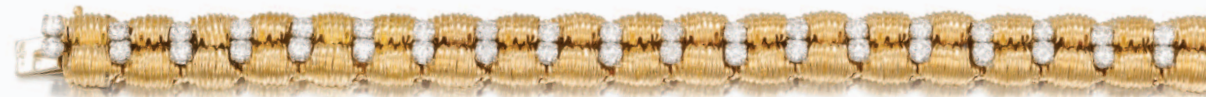


OPPOSITE PAGE 62. Amethyst, diamond and gold drop necklace, French
THIS PAGE 63. Antique gold and diamond brooch designed as a gryphon grappling with a dragon, French
64. 18ct yellow gold, citrine and diamond bracelet



*THIS PAGE 65. Gold herringbone, sapphire and diamond ribbon tassel necklace
66. Sapphire and diamond three-stone carved half-hoop ring mounted in gold 67. Sapphire and diamond circular cluster ring,
mounted in silver and gold OPPOSITE PAGE 68. Pair of 18ct gold and diamond ribbon spray earclips by Tiffany*





OPPOSITE PAGE 69. 18ct yellow gold Retro roof link bracelet, French
THIS PAGE 70. Yellow and white diamond circular cluster brooch, mounted in silver and gold
71. Ribbed gold and diamond two-row bracelet, French



THIS PAGE 72. 18ct yellow gold and pavé-set diamond cocktail ring of *toi-et-moi* design THIS PAGE AND OPPOSITE PAGE 73. Coral and diamond oval link bracelet mounted in gold, by Van Cleef & Arpels, with a coral, diamond and gold cocktail ring en suite



OPPOSITE PAGE 74. Two-coloured gold circular MY LOVE charm
THIS PAGE 75. Star ruby and diamond gypsy ring in engraved gold mount by Tiffany 76. 18ct yellow gold chain link bracelet
by Van Cleef & Arpels 77. Yellow gold octagonal medallion pendant depicting the helmeted head
of Vercingetorix, with Veleda on the reverse, French



THIS PAGE 78. Victorian moonstone, gold and turquoise bangle 79. Graduated ruby five-stone carved half-hoop ring, mounted in gold with rose-cut diamond points 80. Antique ruby and eight-cut diamond lozenge panel ring mounted in gold
OPPOSITE PAGE 81. Victorian cabochon amethyst and gold festoon necklace, in fitted case





OPPOSITE PAGE 82. Pair of 14ct gold knot cufflinks by Raymond Yard
83. Edwardian 14ct gold, ruby and diamond chain link bracelet, in fitted case THIS PAGE 84. Pair of gold loaf cufflinks
of basket-weave design 85. Gold basket-weave circular powder compact by Van Cleef & Arpels



THIS PAGE 86. Ruby and gold oval snuff box by Lacroche, the polished lid applied with a floral pattern
 87. Pair of 18ct gold and sugarloaf cabochon sapphire stirrup cufflinks by Cartier 88. 18ct textured gold bow link bracelet by Bulgari
 OPPOSITE PAGE 89. Art Deco nephrite rectangular card case with diamond-set clasp and hinges 90. Pair of fluted rock crystal and ruby flowerhead cufflinks with diamond centres 91. Pair of Victorian Essex crystal reverse intaglio fighting cock cufflinks, mounted in 18ct gold 92. Pair of platinum and diamond openwork target cluster cufflinks 93. Gold "Atlas" bracelet by Tiffany





THIS PAGE

94. Ribbed gold entwined
rope necklace set with sapphire
and diamond collets
and polished hobnail detail,
by Gübelin

HUMPHREY BUTLER LTD

40/41 PALL MALL, LONDON SW1Y 5JG

TELEPHONE +44 (0)20 7839 3193 FAX +44 (0)20 7930 5943

WWW.HUMPHREYBUTLER.COM

HUMPHREY@HUMPHREYBUTLER.COM

HUMPHREY BUTLER

Agents & Dealers in Fine Jewellery

2012/2013

