

# HUMPHREY BUTLER

*Agents & Dealers in Fine Jewellery*



# HUMPHREY BUTLER

*Agents & Dealers in Fine Jewellery*



HUMPHREY BUTLER LTD

40/41 PALL MALL, LONDON SW1Y 5JG

HUMPHREY@HUMPHREYBUTLER.COM

TELEPHONE +44 (0)20 7839 3193

FAX +44 (0)20 7930 5943

WWW.HUMPHREYBUTLER.COM

# I

F, LIKE W.C. FIELDS, A WOMAN HAS DRIVEN YOU TO DRINK AND you have never had the decency to thank her, this might be the moment.



With the chilly waters of recession lapping at the door, now may not be seen as the ideal time to release brochure no. 12. That said, the market for precious stones and vintage jewellery remains remarkably robust, as borne out by recent auction results. With precious few areas appealing as potential havens for any spare resources, I am hopeful that we might be able to provide a variety of temptations ranging in style and price to those buyers interested in jewellery dating from the early 1800's through the Victorian, Edwardian, Art Deco and post-war periods to the present day.

For vendors, be they private families or professional advisers, our business provides a high level of expertise, discretion and a viable alternative to public auction where the sale opportunities are becoming less frequent and more expensive. In addition, we offer valuations for current market, insurance and probate purposes, together with advice on inheritance and tax issues.

As ever we are happy to undertake repair work, cleaning, restringing and engraving while our designer contacts can always provide excellent ideas for revamping slightly outdated pieces of family jewellery. Equally, we can assist potential buyers in searching for specific items and stones, and we always hold a selection of unmounted diamonds which can then be set to a client's required design, particularly with regard to engagement rings.

Appointments can be made to view the jewellery from Monday to Friday here in Pall Mall, while all our stock can be found on our website at [www.humphreybutler.com](http://www.humphreybutler.com). This does not just cover the more glamorous and extravagant end of the market; we are able to deal with requests at all levels at consistently competitive rates. I say it every year but we provide signet rings, gold chains, penknives, tiepins, a variety of different cufflinks and silverware, so we can nearly always find a solution for those looking for presents to mark a specific occasion. Whatever you are after, please just ask the question. We will do our very best to come up with the answer.

**PREVIOUS PAGE**

1. Pair of antique cabochon garnet and rose-cut diamond tortoise cufflinks

**THIS PAGE**

Newbury racecourse, June 2011



**THIS PAGE**

2. Gold and diamond roaring dragon brooch



**THIS PAGE**  
5. Antique diamond and pearl fringe necklace, mounted in silver and gold

6. Pair of brilliant-cut diamond single-stone earstuds, the diamonds weighing 2.03cts, with detachable diamond square halo mounts



**TOP**  
3. Art Deco diamond openwork panel ring, the central circular-cut diamond weighing approx 2.2Octs

**LEFT**  
4. Pair of brilliant-cut diamond snowflake cluster earclips



**THIS PAGE**

7. Emerald-cut diamond single-stone ring, 6.04cts G colour, VVS2 clarity, by Graff

8. Trap-cut diamond weighing 10.62cts, H colour, VS2 clarity



**THIS PAGE**

9. Diamond single-stone ring, the brilliant-cut diamond weighing 4.51cts, baguette-cut diamond cascade shoulders to the platinum hoop



**THIS PAGE**  
10. Baguette and brilliant-cut diamond tassel clip brooch by Van Cleef & Arpels, mounted in platinum



**THIS PAGE**  
11. Pair of Art Deco brilliant and baguette-cut diamond sprung earclips of openwork ribbon design

12. Art Deco brilliant and baguette-cut diamond panel ring, by Lacloche Freres



**OPPOSITE**  
13. Art Deco sapphire  
and diamond cocktail  
watch, by Tiffany

**THIS PAGE**  
14. Pair of sapphire  
and diamond openwork  
kite-shaped chandelier  
ear-pendants



**THIS PAGE**

15. Pair of sapphire and diamond invisibly-set earclips of creole loop design mounted in platinum, by Oscar Heyman

16. Art Deco sapphire and diamond ring, mounted in platinum, French

17. Art Deco sapphire and diamond demi tonneau cocktail ring



**THIS PAGE**

18. Art Deco diamond shield-shaped clip brooch of openwork design with buff-top sapphire detail





**THIS PAGE**  
19. Edwardian diamond and sapphire pendant of openwork lozenge design, mounted in silver and gold

20. Brilliant-cut diamond and calibré-cut sapphire alternate section wave pattern bracelet, mounted in platinum

**THIS PAGE**  
21. Cushion-shaped sapphire and diamond cluster ring, mounted in platinum

22. Cushion-shaped sapphire single-stone ring of 19.65cts with trilliant-cut diamond shoulders





**THIS PAGE**  
23. Antique diamond graduated openwork chain link necklace, mounted in silver and gold

24. Diamond three-stone ring, the central diamond weighing 1.50ct, mounted in white gold

**OPPOSITE**  
25. Lady's 18ct white gold and diamond Long Island quartz wristwatch by Franck Muller





**ABOVE**  
26. Art Deco ruby and diamond rooflink bracelet, by Cartier



**LEFT**  
27. Edwardian pink tourmaline, diamond and pearl tassel pendant of lozenge design

**BELOW**  
28. Art Deco ruby and diamond entwined ribbon bracelet, mounted in platinum



**THIS PAGE**  
29. Edwardian ruby and diamond rosette cluster ring



30. Antique pearl, ruby and diamond bracelet, mounted in silver and gold



**OPPOSITE**  
31. Pair of diamond  
panel ear-pendants with  
navette-cut diamond  
flexible drops



**THIS PAGE**  
32. Diamond circular  
panel ring applied with  
a baguette-cut diamond  
cruciform motif,  
mounted in platinum



**THIS PAGE**  
33. Belle Epoque  
diamond and pearl  
festoon brooch



**FROM TOP**

34. Square-cut diamond eternity ring mounted in platinum

35. Belle Époque pear-shaped sapphire and diamond two-stone ring

36. Antique demantoid garnet and rose-cut diamond wagon wheel brooch pendant, mounted in gold



**THIS PAGE**

37. Victorian diamond openwork cruciform cluster brooch pendant, mounted in silver and gold

38. Pair of sapphire and diamond cluster ear-pendants, each suspended from a diamond cross motif, mounted in silver and gold



**BELOW**  
39. Art Deco carved  
ruby and diamond  
alternate section bracelet  
of fruit and leaf design



**OPPOSITE LEFT**  
40. Burma ruby  
and diamond bombé  
cocktail ring

**THIS PAGE**  
41. Art Deco ruby and  
diamond half-hoop  
cocktail ring



**THIS PAGE**  
42. Belle Epoque  
pearl and diamond  
seven-strand choker  
with diamond  
pierced hexafoil  
cluster centrepiece



**THIS PAGE**  
43. Pair of Victorian  
diamond chandelier  
ear-pendants of leaf  
and collet design,  
mounted in silver  
and gold

THIS PAGE

44. Art Deco diamond  
and gem-set sailing boat  
clip, by Cartier



THIS PAGE

45. Art Deco diamond  
and emerald crossover  
ring, mounted in  
platinum

46. Art Deco emerald  
and diamond arrowhead  
panel ring, mounted  
in platinum

47. Edwardian sapphire  
and diamond ribbon  
cluster ring, mounted  
in platinum and gold



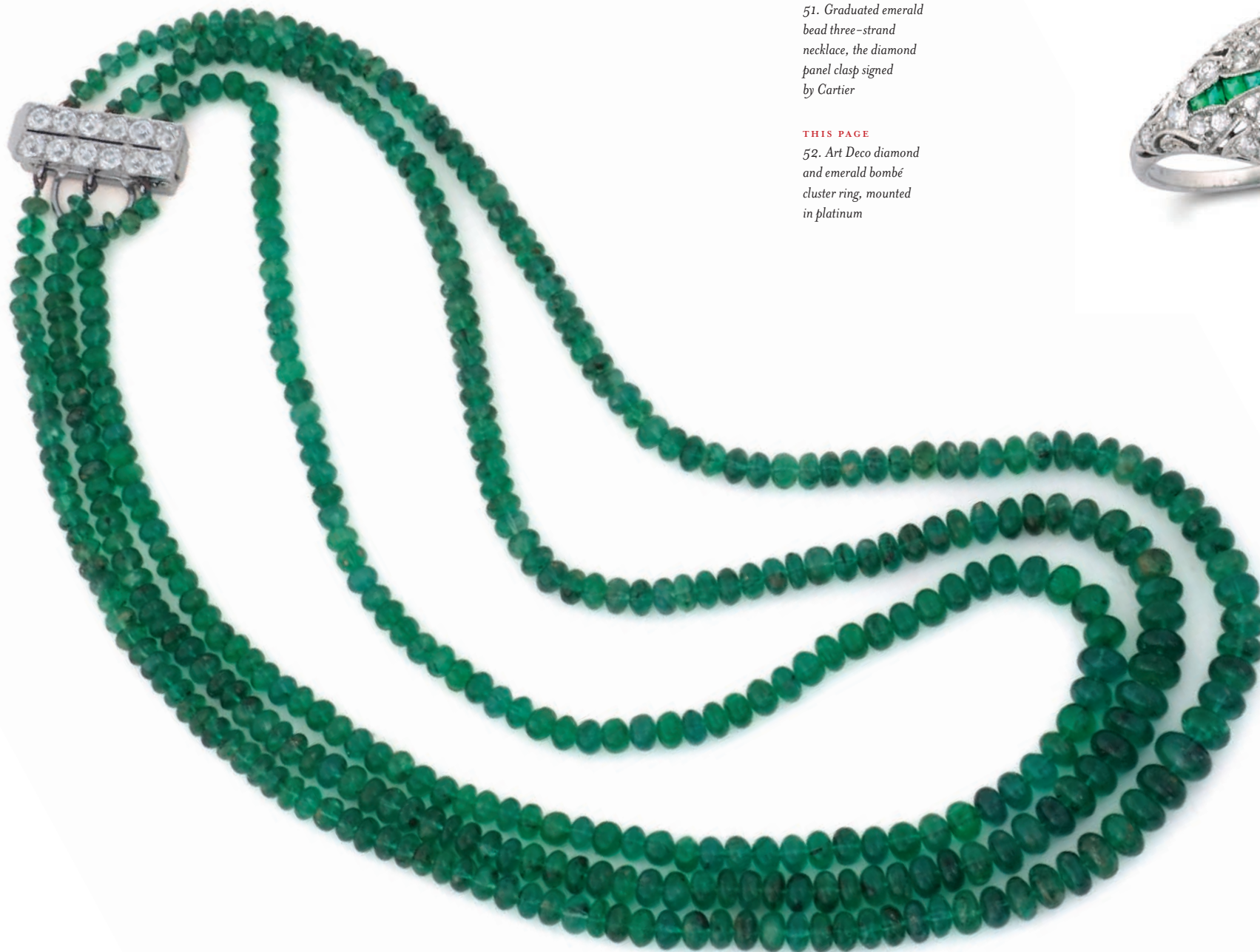


**THIS PAGE**  
48. Natural pearl  
and diamond  
cluster ring

49. Victorian pearl  
and diamond fringe  
necklace with star  
motifs mounted  
in silver and gold,  
in fitted case  
by Hunt & Roskell



**THIS PAGE**  
50. Pair of natural  
pearl and diamond  
circular cluster earstuds



**OPPOSITE**  
51. Graduated emerald  
bead three-strand  
necklace, the diamond  
panel clasp signed  
by Cartier

**THIS PAGE**  
52. Art Deco diamond  
and emerald bombe  
cluster ring, mounted  
in platinum





**THIS PAGE**

53. Diamond and platinum double-sided elephant pendant pavé-set with brilliant-cut diamonds

54. Art Deco cabochon star sapphire and diamond cluster ring



**OPPOSITE**

55. Pair of brilliant and baguette-cut diamond wing earclips

56. Belle Epoque aquamarine and diamond cluster necklace with foliate scroll detail, mounted in silver and gold





**OPPOSITE**

58. Edwardian pink tourmaline, pearl and diamond necklet, with a pair of pink tourmaline and diamond drop ear-pendants en suite

**THIS PAGE**

59. Art Deco ruby and diamond oval panel ring of target cluster design, mounted in platinum

**BELOW**

57. Antique rose-cut diamond swallow brooch with cabochon ruby eyes, mounted in silver and gold





**THIS PAGE**  
60. Antique diamond  
running fox brooch,  
mounted in silver  
and gold

61. Antique diamond  
collet and trefoil bracelet  
forming a necklace,  
by Fontana Frères



**RIGHT**  
62. Antique diamond  
and gold miniature  
brooch, mounted  
in all gold



**OPPOSITE LEFT**  
64. Pair of 19th  
Century garnet and  
enamel panel and  
drop ear-pendants,  
mounted in gold

**THIS PAGE**  
65. Late 19th century  
gold and pearl foliate  
fringe necklace

**BOTTOM**  
66. Amethyst, gem-set  
and gold Kingfisher  
brooch, by Cartier

**RIGHT**  
63. Pair of brilliant-cut  
brown diamond  
earstuds weighing  
2.65cts in total



**ABOVE**  
67. Antique diamond and multi-gem pendant of open circle and lozenge design, mounted in silver and gold



**RIGHT**  
68. Pair of amethyst and diamond drop earrings with quatrefoil cluster tops



**ABOVE**  
69. Art Deco amethyst and diamond rectangular clasp

**LEFT**  
70. Edwardian diamond and multi-gem drop necklet of openwork foliate design, mounted in silver and gold



**OPPOSITE**  
71. Gold and diamond  
sprung snake bangle

**THIS PAGE**  
72. Lady's gold herring  
bone cocktail watch,  
by Vacheron Constantin  
for Hermes







**ABOVE**  
73. Rectangular-cut  
citrine cocktail ring  
with gold leaf  
and beadwork gallery



**THIS PAGE**  
74. Gold open chain  
link bracelet suspending  
nineteen various gold  
and hardstone charms

**THIS PAGE**

75. Pair of gold twisted rope creole loop earrings with link suspensions

76. 18ct yellow gold open oval link bracelet, by Cartier

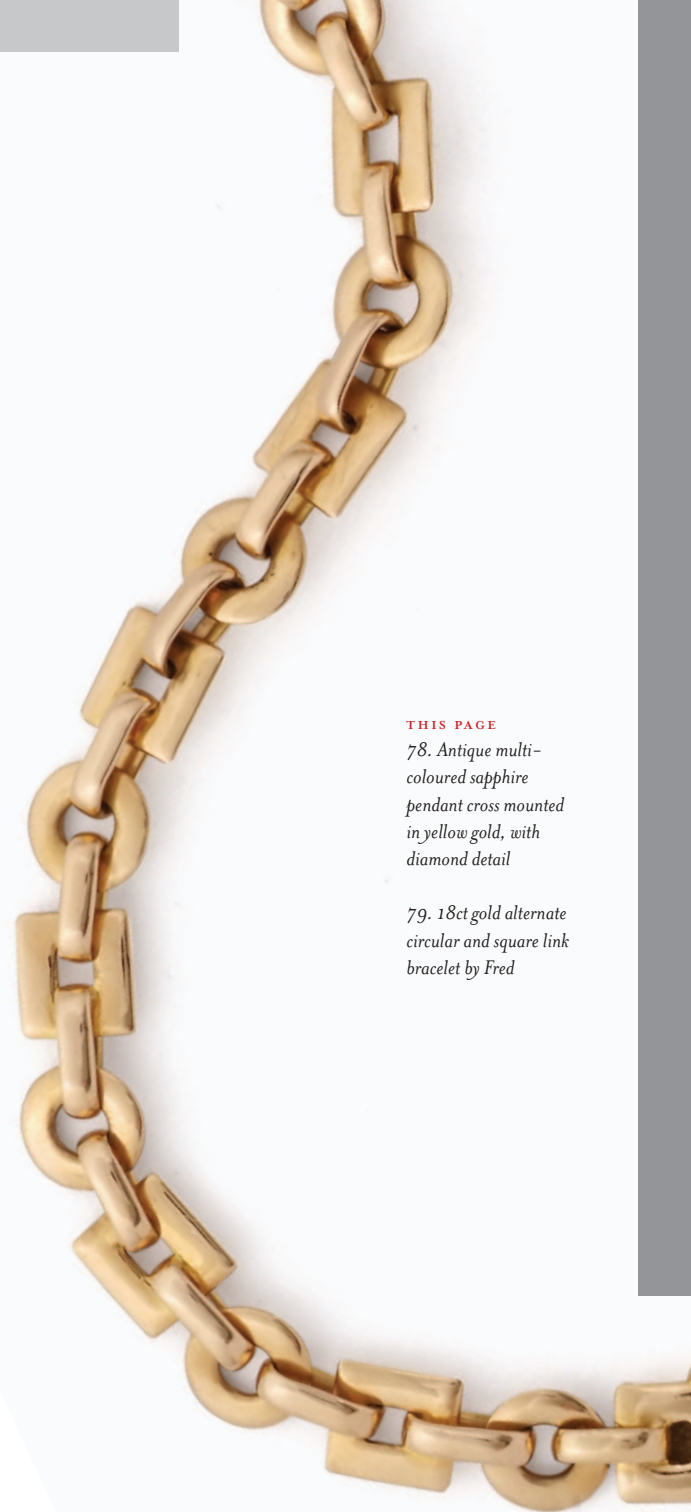
77. Georgian pink topaz and gold single-stone ring, the shank engraved with a leaf pattern



**THIS PAGE**

78. Antique multi-coloured sapphire pendant cross mounted in yellow gold, with diamond detail

79. 18ct gold alternate circular and square link bracelet by Fred



**THIS PAGE**  
80. Platinum and gold basket of fish pendant

**OPPOSITE**  
81. Gold openwork fringe necklace, the polished gold link chain suspending a series of interlocking bar and weave motifs, French marks

82. 18ct gold plaited bracelet with diamond inserts, by Van Cleef & Arpels





**THIS PAGE**

83. Gold rectangular link bracelet with cabochon emerald and diamond intersections, Russian

84. 18ct rose gold bowtie bracelet



**THIS PAGE**

85. Pair of sapphire and gold flowerhead earclips, by Van Cleef & Arpels

86. Antique rectangular-cut garnet, diamond and gold ring



**THIS PAGE**  
87. Moonstone, sapphire and gold bracelet

88. Pair of brilliant-cut diamond and square-cut sapphire creole loop earclips, mounted in all gold, by Oscar Heyman



**THIS PAGE**  
89. 18ct gold hinged bangle of snakeskin design, by Tiffany

90. Gold and diamond noughts and crosses bracelet

91. Antique diamond circular cluster ring, mounted in gold





**THIS PAGE**

92. Pair of mother-of-pearl and rose-cut diamond target cluster cufflinks, mounted in gold

93. Pair of white enamel and gold stripe pattern oval cufflinks

**THIS PAGE**

94. Edwardian diamond, emerald and turquoise swivel stickpin of winning post design

95. Art Deco diamond and ruby reversible stickpin of winning post design, French



**THIS PAGE**

96. Green enamel and gold hinged bangle, by Tiffany Schlumberger

**OPPOSITE**

97. Edwardian green guilloché enamel, gold and gem-set fob watch, in fitted case by LeRoy & Fils





OPPOSITE  
CLOCKWISE FROM  
TOP LEFT

98. Gentleman's 18ct  
yellow gold vintage  
Patek Philippe  
Calatrava mechanical  
wristwatch, circa 1960

99. Gentleman's 18ct  
rose gold Vacheron  
Constantin mechanical  
wristwatch

100. Gentleman's 18ct  
yellow gold Patek  
Philippe Calatrava  
mechanical wristwatch

101. Gentleman's 18ct  
rose gold Omega Cosmic  
automatic wristwatch,  
day, date, month  
and moonphase

102. Gentleman's  
18ct yellow gold Patek  
Philippe Calatrava  
automatic wristwatch

103. Lady's 18ct  
yellow gold Cartier  
Tank Française quartz  
wristwatch

THIS PAGE  
104. Lady's 18ct  
yellow gold Panthere  
wristwatch by Cartier,  
quartz movement







**OPPOSITE**

105. Art Deco mother-of-pearl and diamond dress set, mounted in platinum and gold

**THIS PAGE**

106. Pair of 18ct yellow gold and cabochon sapphire snaffle cufflinks, by Cartier

107. Pair of 18ct gold ropework and sugarloaf cabochon sapphire stirrup cufflinks, by Cartier

108. Pair of 18ct yellow gold knot cufflinks by Tiffany



**THIS PAGE**

109. Aquamarine,  
sapphire and diamond  
cocktail ring mounted  
in gold, by Boucheron

**BACK COVER**

110. Art Deco brilliant  
and baguette-cut diamond  
panel bracelet, mounted  
in platinum, French



**HUMPHREY BUTLER LTD**

40/41 PALL MALL, LONDON SW1Y 5JG  
HUMPHREY@HUMPHREYBUTLER.COM

TELEPHONE +44 (0)20 7839 3193

FAX +44 (0)20 7930 5943

WWW.HUMPHREYBUTLER.COM



[WWW.HUMPHREYBUTLER.COM](http://WWW.HUMPHREYBUTLER.COM)

HUMPHREY BUTLER

2011/2012