

HUMPHREY BUTLER

Agents & Dealers in Fine Jewellery



HUMPHREY BUTLER

Agents & Dealers in Fine Jewellery



HUMPHREY BUTLER LTD
40/41 PALL MALL, LONDON SW1Y 5JG
HUMPHREY@HUMPHREYBUTLER.COM
TELEPHONE +44 (0)20 7839 3193
FAX +44 (0)20 7930 5943

WWW.HUMPHREYBUTLER.COM



BIGGER AND HOPEFULLY BETTER ARE THE key words of this, our eleventh brochure and largest to date. Although other markets have proved fragile over the past year, the company has seen an increased volume of business and vintage jewellery apparently retains its allure, from the early 1800's through the Victorian, Edwardian, Art Deco and later periods to the present day.

As always, we want to present potential buyers with a very broad range of pieces in terms of both style and price. For vendors, our service aims to benefit

both private clients and professional advisers by providing a high level of expertise, discretion and a viable alternative to public auction where the sale opportunities are becoming much more limited. In addition we offer valuations for current market, insurance and probate purposes, together with advice on inheritance and tax issues.

We also undertake repair work, cleaning, restringing and engraving while my old colleague Clare Faulkner is still on hand to provide excellent ideas for revamping slightly outdated pieces of family jewellery. Equally, we are happy to assist potential buyers in searching for specific items and stones, with particular regard to engagement rings and we always hold a selection of unmounted diamonds which can then be set to a client's required design.

Appointments can be made from Monday to Friday to view the jewellery which is on display here in Pall Mall, while a comprehensive catalogue of all our stock can be found on our newly revamped website at www.humphrey-butler.com. This does not just cover the more glamorous and extravagant end of the market; we are able to deal with requests at all levels at consistently competitive rates. I say it every year but we provide signet rings, gold chains, penknives, tiepins, a variety of different cufflinks and silverware, so we can nearly always find a solution for those looking for presents to mark a specific occasion. Whatever you are after, please just ask us. We will do our very best to help.

PREVIOUS PAGE
Antique cushion-shaped emerald and diamond domed cocktail ring, the central emerald enclosed in a diamond cascade mount

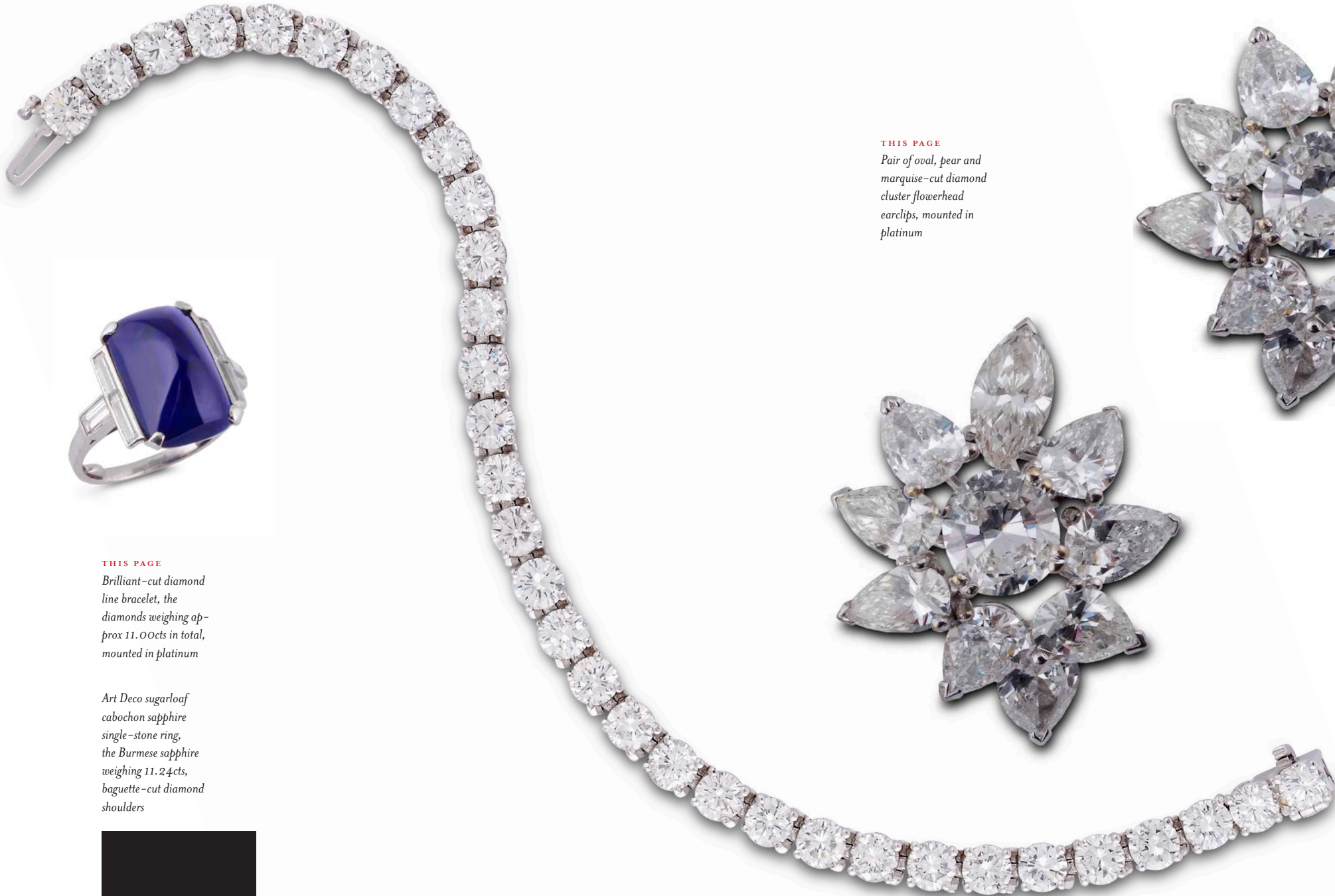
THIS PAGE
Edwardian diamond shield-shaped bombé panel ring



FRONT COVER
AND THIS PAGE

Edwardian diamond
tiara of collet, leaf
and garland design,
in silver and gold





THIS PAGE

Brilliant-cut diamond line bracelet, the diamonds weighing approx 11.00cts in total, mounted in platinum

Art Deco sugarloaf cabochon sapphire single-stone ring, the Burmese sapphire weighing 11.24cts, baguette-cut diamond shoulders



THIS PAGE

Pair of oval, pear and marquise-cut diamond cluster flowerhead earclips, mounted in platinum





THIS PAGE
Antique emerald and diamond Coptic cross pendant with arrowhead points, mounted in silver and gold



THIS PAGE
Set of three gem-set line bracelets mounted in 18ct white gold, in square-cut sapphires, rubies and emeralds



OPPOSITE
*Edwardian diamond
and pearl openwork
stylised heart pendant,
French, on pearl
and diamond chain*



THIS PAGE
*Fancy intense
yellow diamond and
emerald ring, the central
navette-cut diamond
weighing 1.36ct in
baguette-cut emerald
crossover mount*



THIS PAGE

Edwardian enamel and silver snake bracelet, the green enamel scaled body with ruby eyes, in fitted case

Fancy intense yellow radiant-cut diamond single-stone ring of 12.33cts with trilliant-cut diamond shoulders



THIS PAGE

Diamond three-stone ring, set with a central cushion-shaped diamond of 3.86cts flanked by two circular-cut diamonds weighing 2.35 and 1.99cts

Art Deco diamond and gem-set panel ring, the central cushion-shaped diamond with calibré-cut emerald and sapphire points, in platinum and gold





THIS PAGE
Pair of diamond
and platinum wirework
stylised flowerhead
spray earclips

Emerald-cut diamond
single-stone ring,
the central diamond
weighing 2.90cts,
D colour,
Internally Flawless



OPPOSITE
Stainless steel
"Happy Sport" watch
by Chopard, limited
Christmas edition



THIS PAGE

Art Deco cabochon emerald and diamond cocktail ring, the central emerald set in a diamond and platinum bombé honeycomb mount



THIS PAGE

Pair of emerald and diamond leafscroll earclips mounted by Cartier



Emerald and diamond three-stone ring, the square-cut emerald weighing 1.49ct flanked by two old mine-cut diamonds

THIS PAGE

*Edwardian diamond
wreath pendant
suspending a pear-
shaped diamond
weighing 2.19cts*



THIS PAGE

*Lady's navette, baguette
and brilliant-cut
diamond cocktail watch
by Boucheron*



THIS PAGE

Oval-cut single-stone ring, the diamond weighing 4.03cts, G colour, SI1 clarity

Edwardian diamond triple tassel pendant with ribbon loop top



THIS PAGE

Pair of diamond drop ear-pendants, each bar and collet chain suspending a cushion-shaped diamond weighing 2.49ct and 2.62ct respectively

Victorian graduated circular-cut diamond collet necklace mounted in silver and gold





THIS PAGE
Brilliant and navette-cut diamond cascade tassel necklace by Kutchinsky



THIS PAGE
Pair of brilliant and navette-cut diamond cascade tassel ear-pendants by Kutchinsky



Edwardian sapphire and diamond pierced rectangular panel ring



THIS PAGE

Cushion-shaped sapphire single-stone ring, the sapphire weighing 14.17cts with baguette and brilliant-cut diamond three-stone shoulders to the platinum hoop



Pear-shaped diamond crossover ring, the two central diamonds weighing 1.46ct and 1.43ct, diamond shoulders to the platinum hoop



THIS PAGE

Edwardian sapphire and diamond line bracelet, mounted in silver and gold

Pair of antique diamond flowerhead cluster earrings, mounted in silver and gold





THIS PAGE
Pair of diamond single-stone earstuds, the brilliant-cut diamonds weighing 1.90ct and 1.87ct mounted in 18ct white gold

Brilliant-cut diamond single-stone ring, the diamond weighing 3.29cts



Pavé-set diamond bombé cocktail ring mounted in platinum



THIS PAGE
Belle Epoque diamond open circle pendant by JE Caldwell with florette detail, tassel terminal and a single button pearl to the centre



OPPOSITE
Pair of pavé-set
diamond stylised spider's
web ear-pendants
mounted in 18ct
white gold

THIS PAGE
Pair of Victorian
diamond star cluster
brooches, mounted
in silver and gold



THIS PAGE
*Pair of Art Deco coral,
diamond and enamel
chandelier ear-pendants*

OPPOSITE
*Antique coral and
diamond corsage spray
brooch of flower and leaf
design in silver and gold*



THIS PAGE
*Art Deco diamond
and platinum cocktail
ring, the scrolled buckle
mount applied with a
pavé-set diamond panel*





THIS PAGE

Antique natural pearl and diamond bow brooch, mounted in silver and gold, in fitted case by Plante and Bannister

Antique diamond necklace designed as a series of graduated diamond trefoils, suspending a single tassel, mounted in silver and gold



THIS PAGE

Pair of early Victorian diamond chandelier ear-pendants each suspending a pear-shaped diamond cluster, with tassel detail, mounted in silver and gold



Victorian diamond flower and leaf spray brooch, the two cushion-shaped diamond flowerheads mounted en tremblant in silver and gold



THIS PAGE
Pair of diamond three-leaf clover earclips by Oscar Heyman, mounted in platinum



Diamond openwork necklace of heart and scroll design, the wirework mount applied with a series of openwork foliate heart motifs with diamond collet spray detail, mounted in white gold



THIS PAGE
Art Deco calibre-cut ruby and baguette-cut diamond roof ring of tiered design, mounted in platinum



Art Deco diamond cocktail ring of bombé design, pavé-set diamond fan-shaped shoulders to the platinum hoop, stamped by Wolfers



Art Deco sapphire and diamond pierced panel bracelet, circa 1925





THIS PAGE

Edwardian pearl and diamond wreath pendant, mounted in silver and gold, in fitted case

Edwardian diamond and sapphire ring of florette cluster design, diamond-set shoulders to the plain gold hoop

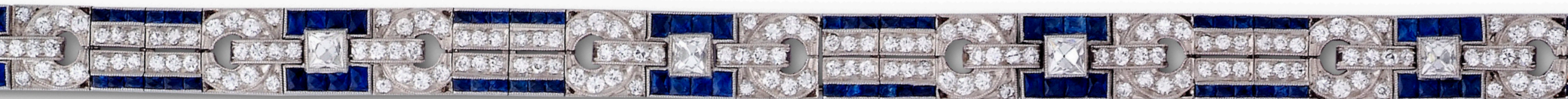
Edwardian sapphire and diamond target cluster ring, with later gold hoop



THIS PAGE

Belle Epoque diamond, natural pearl and gem-set necklace, mounted in platinum and gold

Art Deco sapphire and diamond bracelet designed as a series of brilliant and scissor-cut diamond buckle links with French cut sapphire detail, mounted in platinum





THIS PAGE
 Yellow gold and gem-set ribbon bow necklace with cabochon emerald and ruby points and embellished with diamond bombé clusters, signed by Boucheron

Cushion-shaped pink tourmaline ring of 6.40cts, with baguette-cut diamond single-stone shoulders to the plain platinum hoop



THIS PAGE
 Pair of gold turbo shell ear-pendants by Lalaounis

18ct yellow gold woven mesh wide band bracelet, Italian



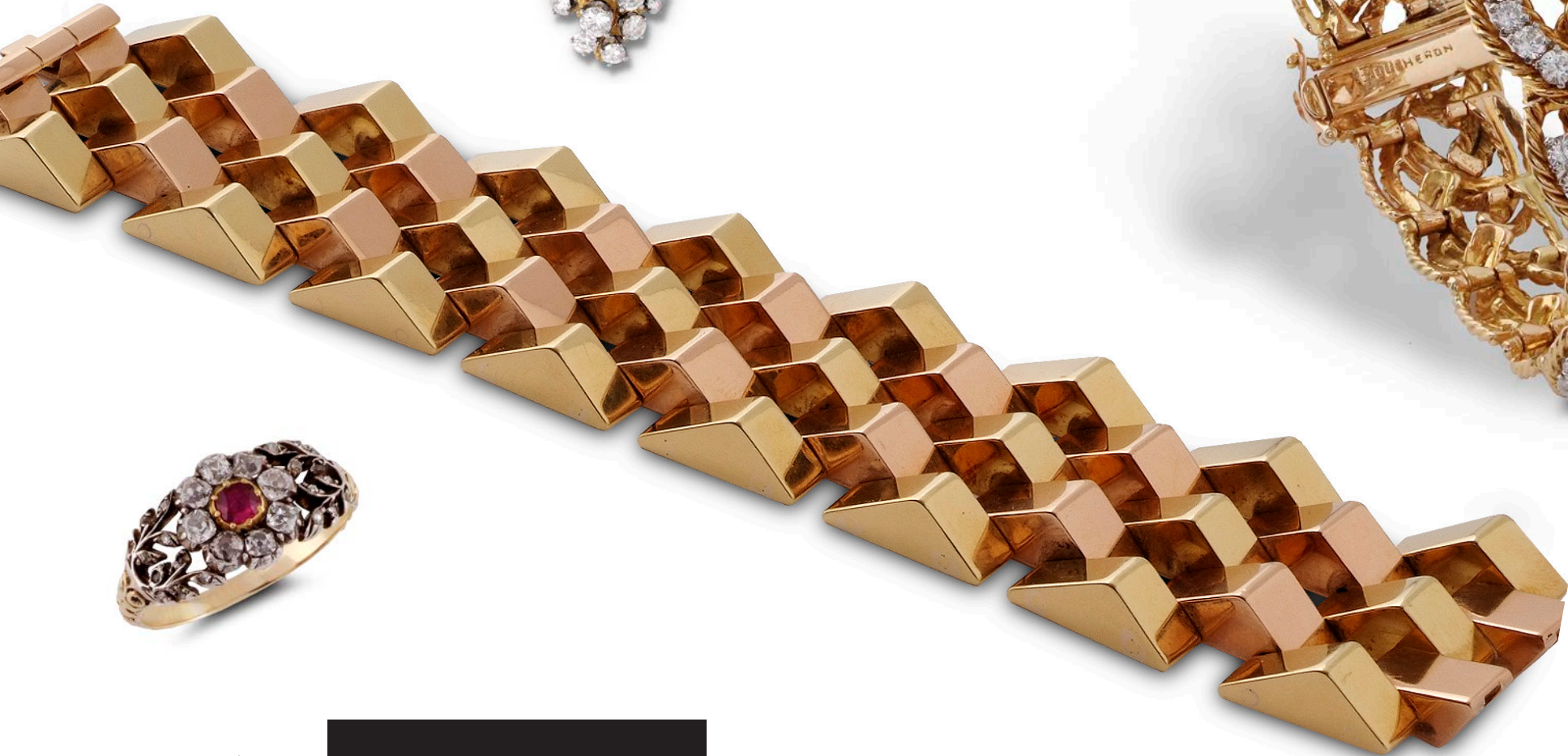
Cushion-cut pink Burma sapphire ring of 4.04cts with stepped baguette-cut diamond shoulders to the plain hoop

THIS PAGE

Brilliant-cut diamond
and 18ct gold openwork
pierced floral spray
brooch in the form
of a foxglove

Two-coloured 18ct
gold tank track bracelet,
Austrian

Georgian ruby
and diamond
floral cluster ring
with leaf shoulders
to the gold mount



THIS PAGE

Brilliant-cut diamond
and 18ct gold plaited
"Tresse" bracelet
by Boucheron



THIS PAGE
Edwardian peridot,
diamond and pearl tassel
pendant, in fitted case
by JH Williams



THIS PAGE
Rectangular aquamarine
ring of 19.52cts with
marquise-cut diamond
shoulders to the white
gold hoop



THIS PAGE
Pair of aquamarine
and diamond earrings,
each pear-shaped
aquamarine drop
weighing approx.
9.00cts suspended
from a diamond
ten-stone chain



OPPOSITE
Victorian diamond
pierced circular cluster
centrepiece mounted in
silver and gold

THIS PAGE
Gold laurel wreath
tiara, hinged to the
centre, circa 1905

Art Deco glass and
diamond buddha jabot
pin by Lacroche

THIS PAGE

Gentleman's gold mechanical Cellini wristwatch by Rolex, black dial with Arabic numerals



Gentleman's gold automatic vintage Date-just wristwatch by Rolex, champagne baton dial with date and central seconds hand, 1965



Gentleman's rose gold mechanical Gondola wristwatch by Patek Philippe, frosted rose dial with applied Arabic numerals and subsidiary seconds



THIS PAGE

Lady's gold watch by Chopard, the square white dial with Roman chapters, plain gold hands and cabochon winder to the gold brickwork bracelet

THIS PAGE

Edwardian gold and platinum twin snake ring, the engraved bodies with pear-shaped diamond heads and ruby eyes



Two-coloured gold openwork wirework bangle by Cartier



Antique diamond and enamel bracelet designed as six openwork floral wreaths, each set to the centre with a brilliant-cut diamond bound in white enamel, French



THIS PAGE

Gentleman's white gold mechanical wristwatch by Audemars Piguet, silvered dial with subsidiary seconds and with visible movement



Gentleman's gold mechanical Calatrava wristwatch by Patek Philippe, white Roman dial with subsidiary seconds and hobnail bezel



White gold quartz chronograph Tank Americaine wristwatch by Cartier, silvered Roman dial with date and stopwatch dials



THIS PAGE

Diamond and enamel sailfish brooch, with blue enamel sail and black and blue enamel fins, single ruby eye, mounted in platinum

Pavé-set diamond salmon brooch with ruby eye and enamelled fins



THIS PAGE

Victorian diamond coaching horse stickpin mounted in silver and gold



THIS PAGE

Pavé-set diamond and demantoid garnet pheasant brooch with cabochon ruby eye, mounted in platinum and gold

Pair of enamel, gold and diamond cufflinks, each shell disc set with a single diamond collet to the centre

A pair of Edwardian diamond, mother of pearl, gold and platinum square panel cufflinks



THIS PAGE AND OPPOSITE

Reverse crystal and gold bracelet by Raymond Yard, composed of five Essex crystal circular panels depicting five different songbirds, the gold links between of birds nest and nesting box design



THIS PAGE

Cabochon amethyst and gold bracelet, the gold cut-cornered rectangular openwork links alternately set with five square cabochon amethysts, French



Large amethyst single-stone ring mounted in gold, set with an oval-cut amethyst weighing approx. 50.00cts



Rectangular green tourmaline single-stone ring with diamond-set foldover shoulders to the white gold hoop

THIS PAGE

Black onyx and diamond stylised Cadillac brooch, with baguette-cut diamond windows, brilliant-cut diamond wheels and square-cut diamond base, mounted in gold

Multicoloured sapphire, spinel and diamond three-row cuff bracelet mounted in white gold



THIS PAGE

*Gold and coral toi-
et-moi cocktail ring,
the 18ct gold hinged
crossover mount of
openwork mesh design,
square-cut coral terminals
by Donald Claflin
for Tiffany*

**BACK COVER
AND PAGE 48**

*Brilliant-cut diamond
and 18ct gold plaited
"Tresse" bracelet
by Boucheron*



HUMPHREY BUTLER LTD
40/41 PALL MALL, LONDON SW1Y 5JG
HUMPHREY@HUMPHREYBUTLER.COM
TELEPHONE +44 (0)20 7839 3193
FAX +44 (0)20 7930 5943

WWW.HUMPHREYBUTLER.COM

WWW.HUMPHREYBUTLER.COM



HUMPHREY BUTLER

Agents & Dealers in Fine Jewellery

2010/2011

