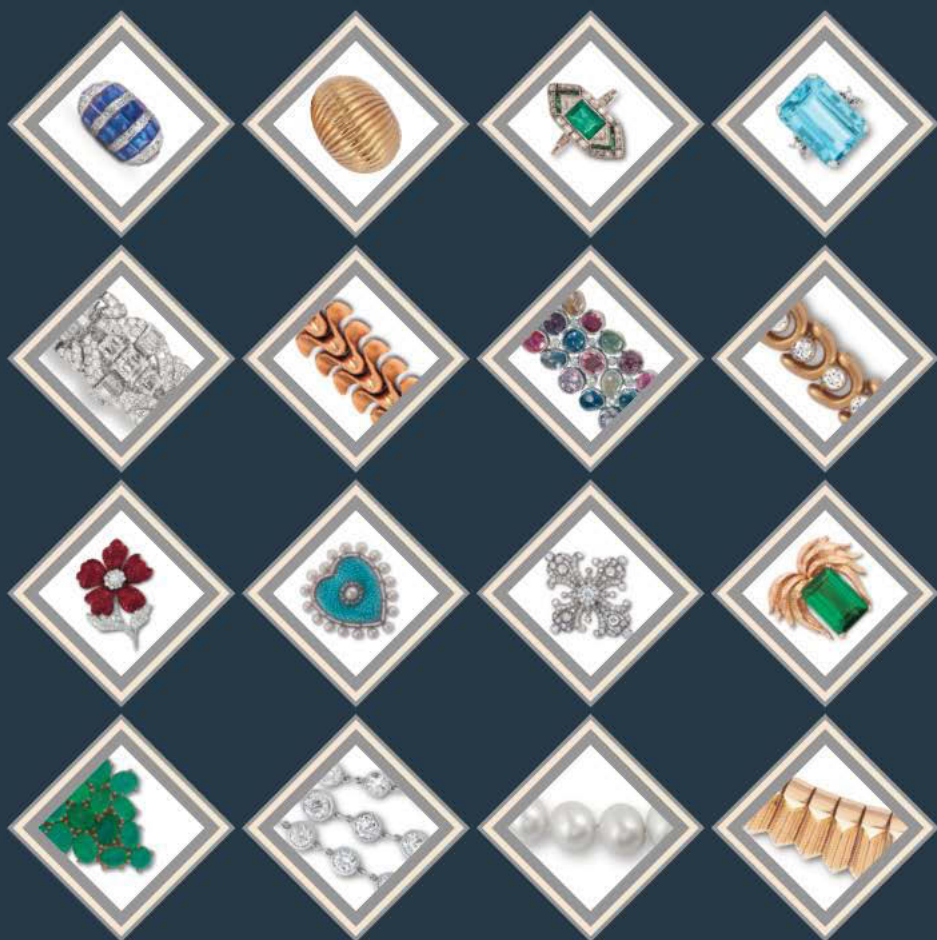


HUMPHREY BUTLER

AGENTS & DEALERS IN FINE JEWELLERY





H U M P H R E Y B U T L E R

AGENTS AND DEALERS IN FINE JEWELLERY



Selected Fine Jewellery 2007



Art Deco sapphire and diamond bombe cocktail ring mounted in platinum

Preceding page:

Engraved gold butterfly brooch, English, 19th Century

Victorian blister pearl and rose-cut diamond goose brooch with ruby eye

H U M P H R E Y B U T L E R

Eight years on from our first brochure, I am delighted to present our largest range of period and contemporary jewellery to date. In that time, the company has consolidated its position as a market leader in advising those who want to acquire or dispose of fine jewellery of all prices and periods, from the late 18th century to the present day.

Our service has been tailored to be of benefit to both private clients and professional advisers by providing a high level of expertise, discretion and a viable alternative to public auction where sale opportunities are becoming more limited. We offer valuations for current market, insurance and probate purposes together with impartial advice on related tax planning issues.

We also advise on repair work, cleaning, re-stringing, engraving and the different problems posed by security and storage, while the addition of Clare Faulkner to our team gives us a qualified designer to help with re-working old family jewellery.

Equally, we are happy to assist potential buyers and search for specific items and particular stones. Appointments can be made to view the jewellery shown here at our offices, while a comprehensive catalogue of all the current stock can be found on our website at www.humphreybutler.com. This does not just cover the more extravagant end of the market, as we are able to deal with requests at all levels at consistently competitive rates. We provide signet rings, gold chains, a variety of different cufflinks and silverware, and we can nearly always find a solution for those looking for presents to mark any occasion. Whatever you are looking for, please just ask us. We will do our very best to help.



EARRINGS





1. *Pair of bronze and white pearl and diamond flowerhead cluster earrings*
2. *Pair of sapphire and diamond floral cluster earstuds*
3. *Pair of cabochon emerald and diamond circular cluster earrings*
4. *Pair of ribbed gold mollusc earclips by Cartier, Paris*



5



6



7



8

5. Pair of aquamarine and diamond pierced rectangular cluster ear-pendants with diamond trefoil tops
6. Pair of antique diamond double floral cluster ear-pendants
7. Pair of antique diamond openwork chandelier ear-pendants of foliate design
8. Pair of moonstone drop ear-pendants with diamond leaf and collet mounts



9



10

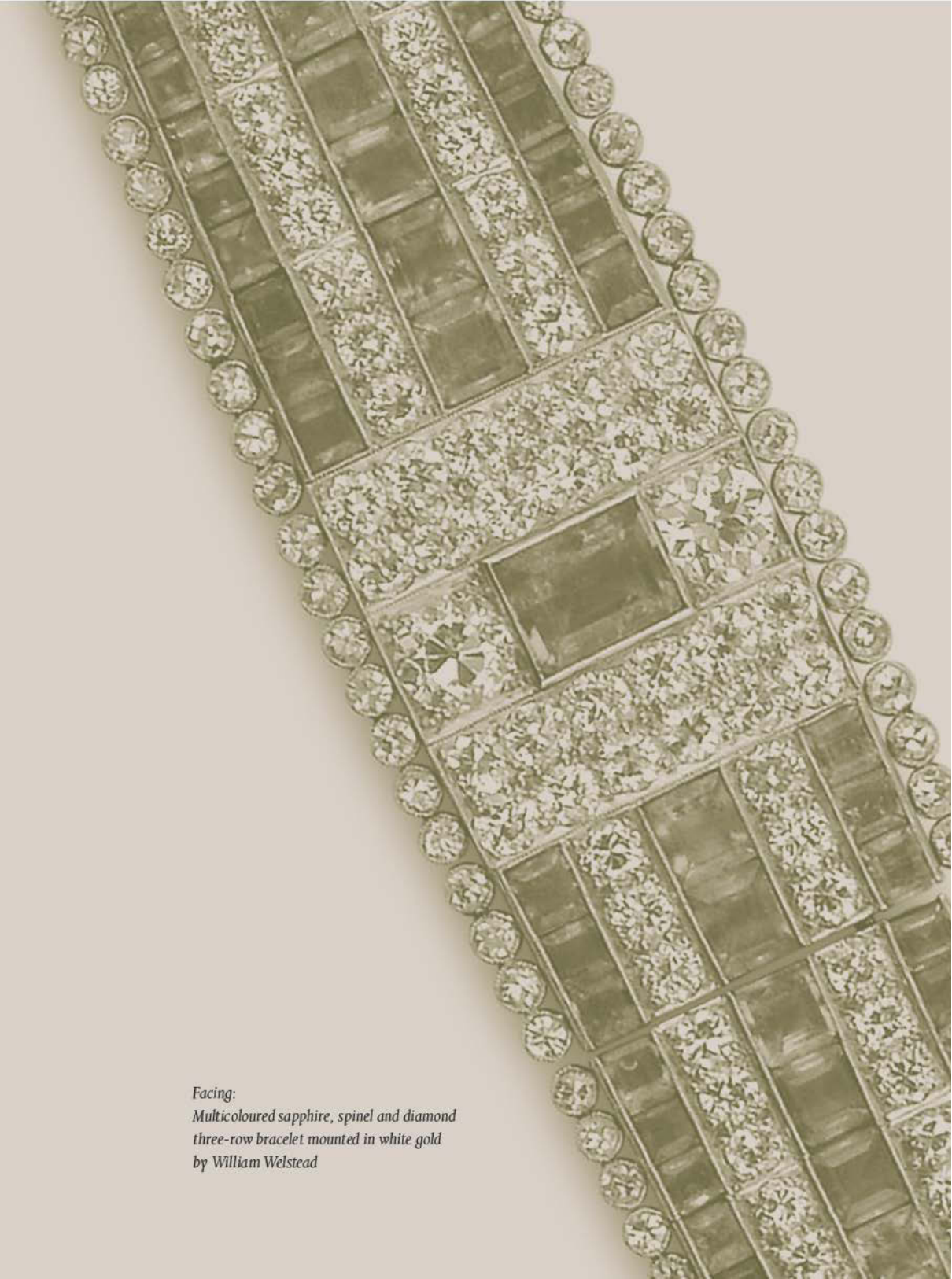


11

9. Pair of briolette-cut aquamarine drop earrings, each suspended from a diamond-set longchain
10. Pair of diamond and black onyx baton and open circle ear-pendants
11. Pair of aquamarine tear-drop earrings, each suspended from an Edwardian diamond mount



12. Pair of fluted pink tourmaline drop earrings, each suspended from a purple and pink spinel chain with diamond detail
13. Pair of multi-coloured sapphire grape cluster ear-pendants with diamond-set french wire mounts
14. Pair of pink tourmaline and diamond ear pendants, each tourmaline and diamond wedge-shaped top suspending a large pink tourmaline drop, the two drops weighing 63.28cts in total



*Facing:
Multicoloured sapphire, spinel and diamond
three-row bracelet mounted in white gold
by William Welstead*

BRACELETS





15



16



17

15. Brilliant-cut diamond three-row flexible bracelet with four openwork panels, each set with a navette-cut diamond to the centre
16. Lady's Art Deco diamond cocktail watch with pierced panel link bracelet
17. Brilliant-cut diamond line bracelet mounted in platinum



18



19

18. Art Deco emerald and diamond tapering five-row bracelet with diamond edging

19. Art Deco diamond strapwork bracelet

20



21



20. 18ct gold armadillo link bracelet
21. 18ct two-coloured gold escalator link bracelet



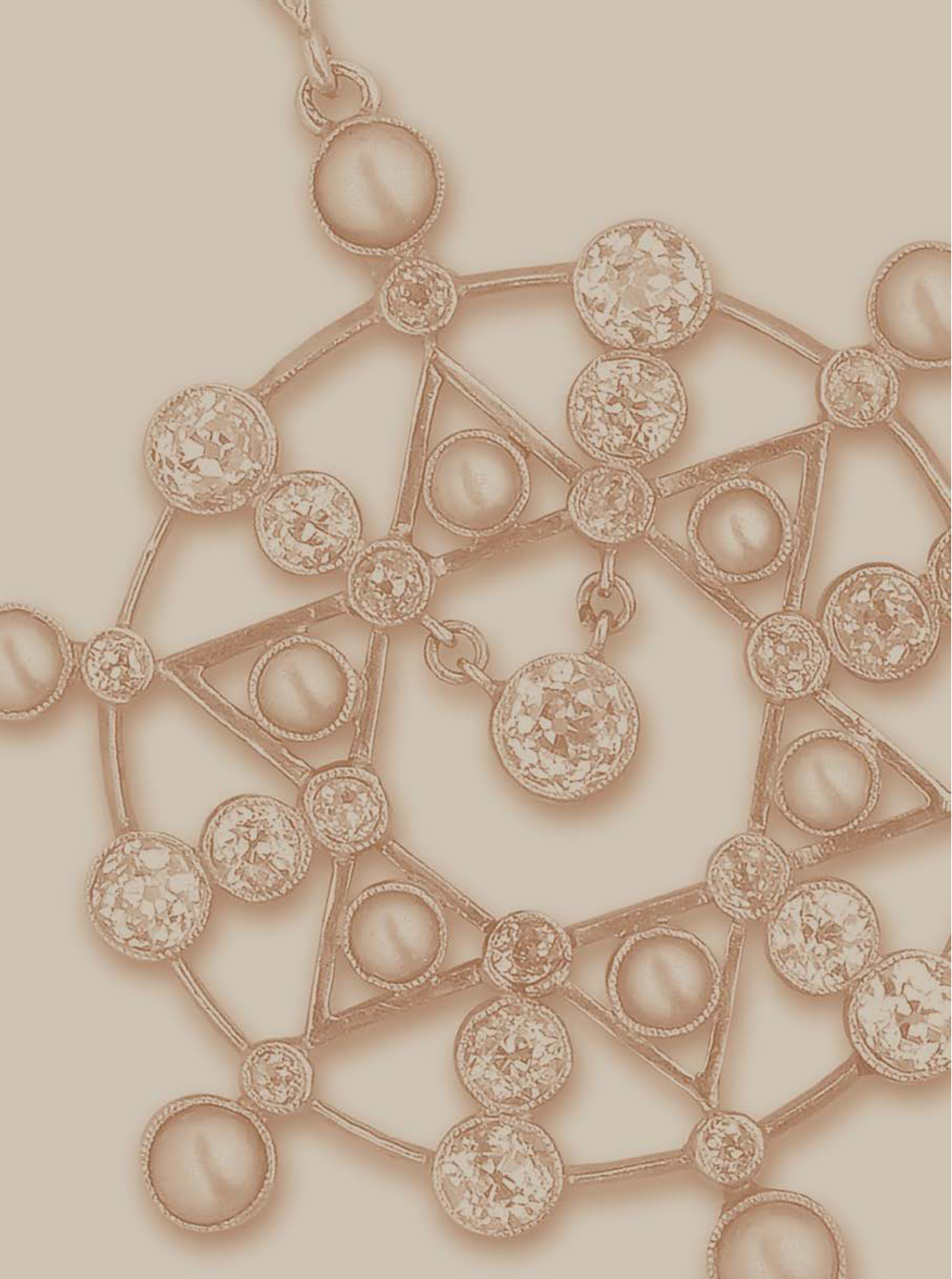
22



23

22. Gold and diamond stirrup link bracelet set with 31 brilliant-cut diamonds

23. Edwardian ruby and diamond openwork panel bracelet





NECKLACES & PENDANTS



24. 18ct gold fringe necklace in the Egyptian style, French



25. 18ct gold mesh collar with open circle link intersections



26. South Sea pearl single-strand necklace strung with 30 pearls graduating from 15.5mm to 11.50mm



27. Graduated rectangular aquamarine necklace forming two bracelets



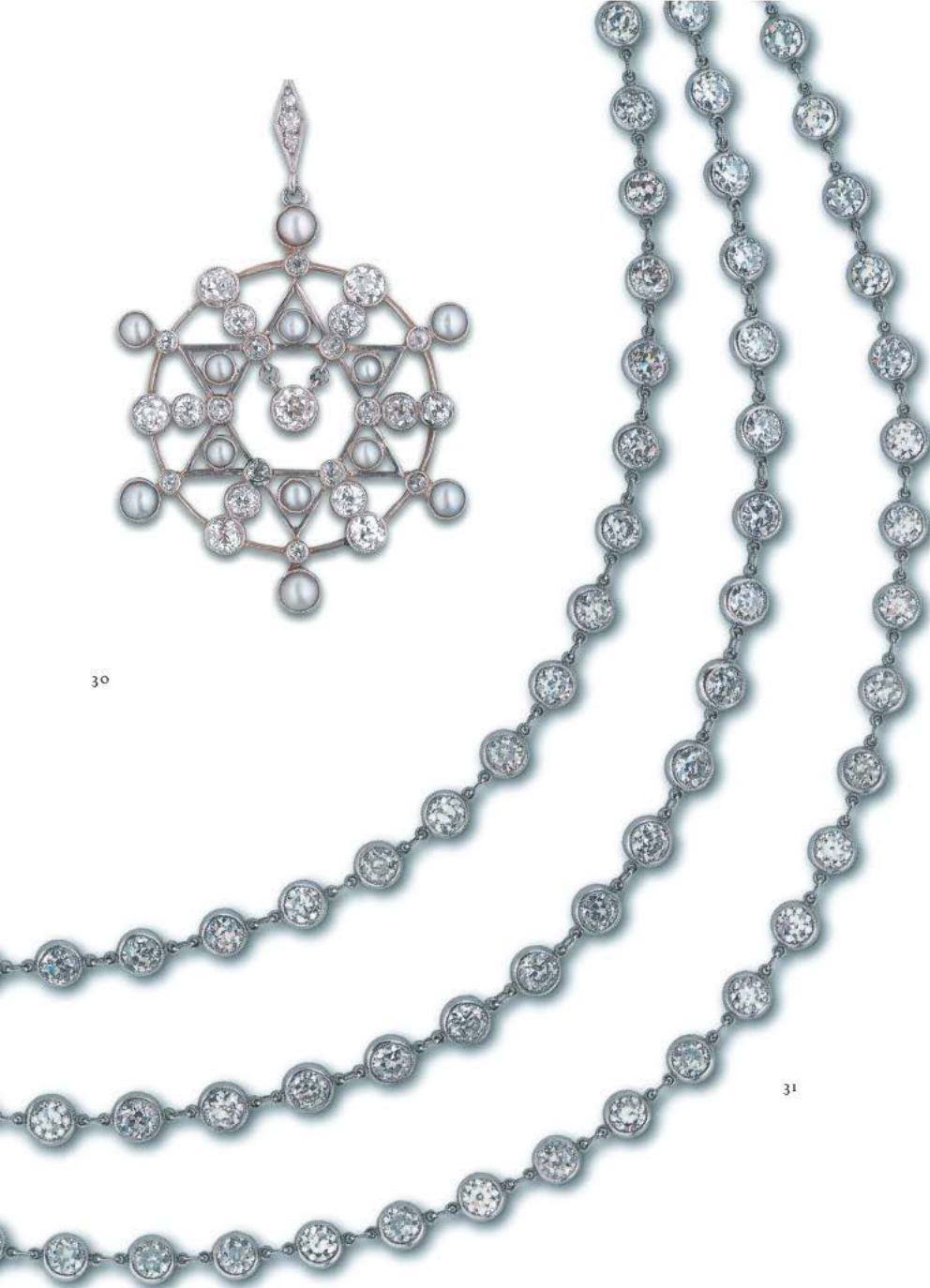
28. *Graduated cushion-shaped diamond line necklace mounted in platinum, with small diamond spacers*



29. *Diamond twisted rope necklace suspending a fringe of graduated pear-shaped diamonds*



30



31

30. Edwardian pearl and diamond openwork Star of David pendant of snowflake design mounted in gold
31. Brilliant-cut diamond longchain mounted in platinum containing approximately 30cts of diamonds



32. Belle Époque seed pearl and diamond octagonal panel pendant with diamond wrap-over points



33. *Edwardian diamond lacework pierced bib necklace mounted in platinum*



34. Large pear-shaped aquamarine drop weighing 49.09cts with diamond bow top on a diamond-set 18ct gold neckchain

S A U T O I R





35. Art Deco diamond and emerald sautoir, consisting of four diamond bracelets forming a necklace and separate pendant brooch section



Facing: Art Deco emerald and diamond open frame clip brooch, in fitted case by Collingwood

BROOCHES



36



37



36. *Antique diamond heart and collet openwork spray brooch*

37. *Contemporary pave-set sapphire & diamond dragonfly brooch*



38



39



40

38. Multi-coloured sapphire and diamond floral spray brooch by Cartier, 1940's
39. Carved rose quartz and diamond lily spray brooch
40. Large invisibly-set ruby and diamond flower brooch



41



42

41. Brilliant and baguette-cut diamond knotted ribbon clip brooch
42. Large antique diamond star cluster brooch, in fitted case



43



44

43. Georgian diamond Coptic cross brooch mounted in silver and gold, in fitted case by Collingwood
44. Antique diamond and moonstone openwork lozenge-shaped brooch pendant mounted in gold



Facing: Calibre-cut ruby and diamond ribbon marquise panel ring mounted in yellow gold

RINGS DIAMONDS OBJETS





45



46



47

45. *Edwardian rectangular sapphire and diamond panel ring mounted in platinum*

46. *Art Deco diamond panel ring, the central cushion-shaped diamond weighing approx 1.20cts, mounted in platinum*

47. *Art Deco sapphire and diamond bombe cocktail ring mounted in platinum*



48



49



50

48. Art Deco calibre-cut sapphire and diamond alternate section bombe cocktail ring mounted in platinum
49. Art Deco diamond panel ring with rectangular-cut diamond centre
50. Antique sapphire and diamond cluster ring of cruciform design mounted in gold



51



52



53

- 51. *Art Deco emerald and diamond stylised hexagonal panel ring*
- 52. *Cushion -shaped citrine of 11.59cts set in a Belle Époque platinum and diamond mount*
- 53. *Rectangular-cut aquamarine single-stone ring with diamond scroll shoulders, the aquamarine weighing 20.12cts*



54



55

54. Ruby and diamond three-stone ring mounted in gold, the ruby weighting 3.07cts

55. Important Burmese cushion-shaped ruby single-stone ring with baguette-cut diamond shoulders, the ruby weighing 5.55cts

D I A M O N D S



56



57



58



59



60

- 56. Unmounted emerald-cut diamond weighing 1.04 cts, J colour VS2 clarity
- 57. Unmounted cushion-shaped diamond weighing 1.63 cts, G colour SI1 clarity
- 58. Unmounted brilliant-cut diamond weighing 1.63 cts, F colour VS1 clarity
- 59. Unmounted cushion-shaped diamond weighing 3 cts, I colour SI1 clarity
- 60. Unmounted cushion-shaped diamond of 3.43 cts, H colour VVS1 clarity

O B J E T S



61



62

61. Art Deco gold and black enamel striped powder compact with diamond push-piece, by Cartier

62. Pair of 18ct gold snaffle cufflinks by Cartier



With his unique way of looking at unusual stones, William Welstead has become a leading force in London's contemporary jewellery scene in recent years, combining colour, texture and lustre in uncluttered 22ct gold wirework settings to make simple but exceptional jewels.

William is a great advocate of the less exalted gemstone – spinel, tourmaline, zircon – giving them clarity in restrained designs. He finds beauty in the unconventional, using Indian rose-cut diamonds to enhance the intense colour of polished gem pebbles and making wearable pieces with more than a nod to the great jewels of the Nizams of Hyderabad.

Like the creator, this is jewellery with its own distinct relaxed charm, and we are delighted to offer a range for those who look more to the contemporary than the traditional.

A Baroque emerald bead sautoir with faceted diamond beads between

WILLIAM
WELSTEAD



63



64



65



63. A pair of emerald pebble three-stone ear-pendants with faceted diamond spacers

64. A pair of multi-coloured cushion-shaped Burmese zircon collet earrings

65. A red spinel pendant cross mounted in 22ct gold



66



67

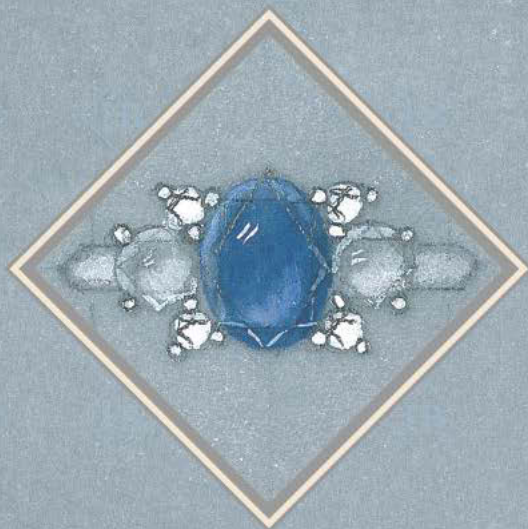


69



68

66. An emerald cabochon Bacchus pendant mounted in 22ct gold
67. A cushion-shaped pink Burmese sapphire single-stone ring, 4.04cts, mounted in 22ct gold
68. A pink spinel lotus cluster ring mounted in 22ct gold
69. A large cushion-shaped pink spinel single-stone ring, 9.58cts, mounted in 22ct gold



*Oval-cut sapphire ring with brilliant-cut diamond three-stone shoulders
to the 1&t white gold hoop*

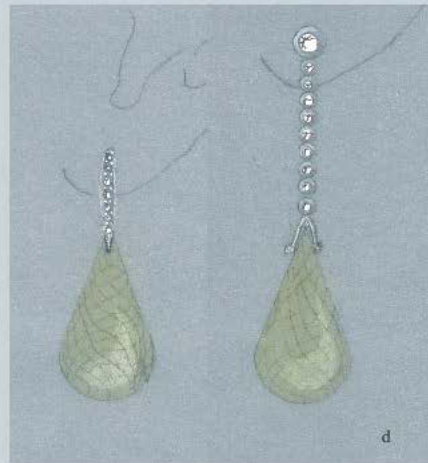
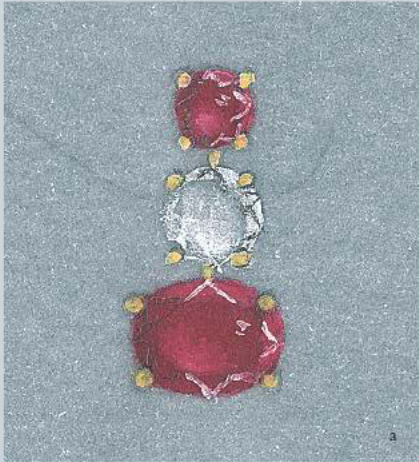


CONTEMPORARY DESIGN & REDESIGN

Clare Faulkner joined the firm in late 2006.

A graduate of the Gemological Institute of America in New York, she then spent two years working within the manufacturing arm of Graff Diamonds, consolidating her knowledge of gemstones and developing a passion for design.

Prior to starting with us, Clare furthered her GIA studies by qualifying in contemporary jewellery design. Through her innovative ideas and technical draughtsmanship, the company can now offer a bespoke service in terms of either re-modelling an inherited family piece or creating something entirely individual to order.



- a. Re-design for a client's ruby and diamond ring to a ruby and diamond claw-set earring
- b. Re-design of a client's pair of antique emerald and diamond earrings
- c. Octagonal-cut Burmese sapphire ring with pave-set diamond shoulders to the platinum hoop
- d. Earring designs for a pair of briolette-cut lemon quartz drops weighing 38.70 cts



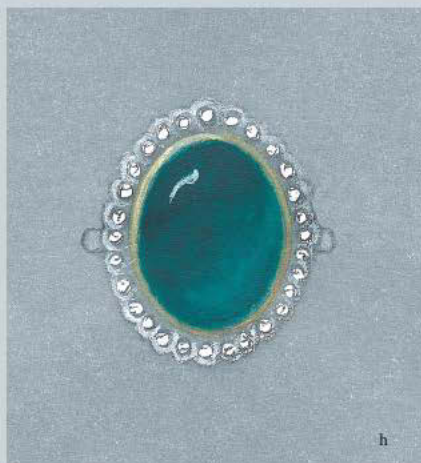
e



f

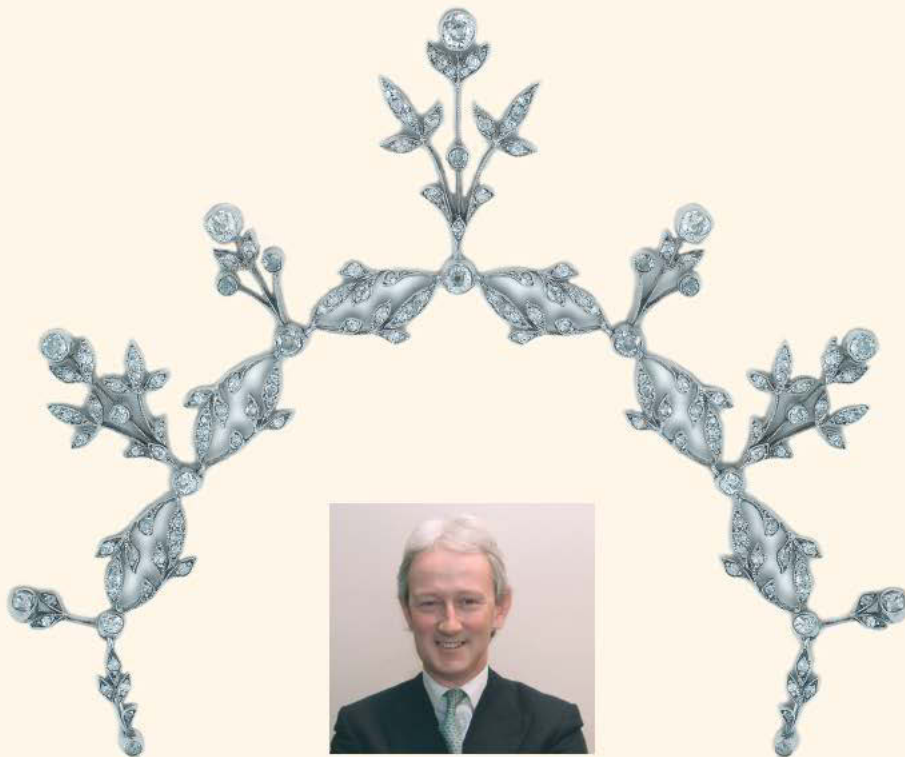


g



h

- e. Pear-shaped peridot drop of 23.23cts mounted as a pendant in a pave-set tsavorite garnet surround on a gold chain with diamond and tsavorite detail
- f. Earring designs for a pair of briolette-cut pink tourmalines
- g. Diamond and emerald cruciform pendant mounted in 18ct white gold
- h. Cabochon emerald and diamond cluster ring, the emerald in a micro-set diamond surround, mounted in gold and platinum



HUMPHREY BUTLER LTD

LONDON
58 JERMYN STREET
LONDON SW1Y 6LX
TELEPHONE (44) 207 629 0739
FAX (44) 207 629 5548

NEW YORK
19 EAST 66TH STREET
NEW YORK NY 10021
TELEPHONE (1) 212 772 8083
FAX (1) 212 772 8186

WWW.HUMPHREYBUTLER.COM

EMAIL humphrey@humphreybutler.com

A MEMBER OF THE DICKINSON GROUP

Above:
Edwardian diamond and platinum tiara/necklace
of leaf and collet design

*There are many things in life
that are more important than money.*

And they all cost money.

Fred Allen



Diamond cocktail watch by Baume & Mercier

Back cover:

An Art Deco aquamarine and diamond clip brooch



HUMPHREY BUTLER LTD

58, Jermyn Street, London SW1Y 6LX

Telephone 020 7629 0739

Mobile 07785 734 509

Fax 020 629 5548

humphrey@humphreybutler.com

www.humphreybutler.com

A Member of the Dickinson Group of Companies