

# HUMPHREY BUTLER

*Agents & Dealers in Fine Jewellery*



2022 - 2023

2022 - 2023

# HUMPHREY BUTLER

*Agents & Dealers in Fine Jewellery*



HUMPHREY BUTLER LTD

40/41 PALL MALL, LONDON SW1Y 5JG

+44 (0)20 7839 3193

INFO@HUMPHREYBUTLER.COM

HUMPHREYBUTLER.COM

---

**J**EWELLERY IS OFTEN CONSIDERED A SAFE HAVEN IN TIMES OF TURMOIL but we are not immune to a spot of inflation ourselves and the 169 jewels contained in this brochure total our largest offering to date. Better still - and we say this with a hint of pride - they represent perhaps the best collection we have ever put together. Among the highlights inside you will find some truly spectacular pieces; a wonderfully rare Georgian diamond necklace (no. 14), a jaw-dropping pair of early Victorian diamond chandelier earrings (no. 104), an eye-watering but feather-light 19th century diamond cluster bracelet (no. 122) and what we can confidently put forward as the finest pair of antique pearl earrings available for sale in London (no. 71). All are proof, if proof were needed, that the loveliness of things of beauty does not fade, but only increases with time. Those of you planning your outfit for the Coronation: look no further!

On the coloured stone front, we have a particularly strong showing in emeralds, whose popularity has grown and grown over the last few years. The ring shown on the front cover is an exceptional example; small and subtle but entirely untreated, an emerald of this colour and quality is vanishingly rare. You will find more wonderful Colombian stones on pages 20-25 including two beautifully made Art Deco panel rings which are the height of 1920's chic. In the blue corner, we are showing two fabulous pairs of Ceylon sapphire earrings, one a highly wearable pair of studs (no. 52) and then some gorgeous drops (no. 140) salvaged with a pendant (no. 148) from a much less wearable brooch mount.

In terms of mixing the old and new, we are never averse to re-mounting old stones in contemporary settings and three old stones have received a wonderful makeover at the hand of our old sparring partner William Welstead who has a formidable touch when it comes to reinvigorating old material. The Burmese ruby of 2.37cts (no. 26), the rich Colombian emerald of 4.33cts (no. 35), and the cushion-shaped E colour diamond (no. 73) have all benefitted hugely from his exquisite workmanship.

No collection would be considered complete without including the Cartier name and we have two eminently wearable diamond bracelets carrying the prized signature, one a gorgeous triangular link which oozes Art Deco style and the other a charmingly simple rectangular link (no. 6 and no. 70). But as always, we aim to provide something to suit every taste and budget (so long as



your taste coincides with ours!). For instance you will find some enchanting gold and diamond pendants on pages 38, 58 & 69 including a 'must' for any cricket enthusiast, numerous pairs of diamond studs (do ask us if those you see here don't quite fit as we keep a stock of stones ready to be mounted to your specifications) and some sweet brooches on pages 59 & 64 for the more discerning poultry fancier. We hope you enjoy browsing through these treasures as much as we have enjoyed putting them together and if you are searching for something particular that you can't seem to find here, do please get in touch. We are always happy to help with the hunt for the perfect present.

As has traditionally been the case, the jewellery market remains remarkably robust in the face of trying financial weather. If you happen to have pieces gathering dust and would like our advice without any obligation to sell, just let us know. We have enjoyed a number of successes on behalf of clients over the past year at all ends of the market, providing a discreet alternative to the expense and delay of auction and achieving prices well beyond initial expectations.

We look forward to seeing you here in Pall Mall soon and we hope, while flicking through these pages, you will remember the exhortation of our enchanting Georgian gem-set clip brooch (no. 139); however troublesome the times, VOUS LE MERITEZ! That said, the husband who receives the cufflinks (no.165) on the last page might raise a quizzical eyebrow.

ABOVE  
FROM LEFT

Lily Heit,  
Humphrey Butler,  
Willa Harris  
and Bobby  
Leigh-Pemberton

#### COVER

1. Antique Colombian emerald and old mine-cut diamond cluster ring, the octagonal emerald weighing 2.31cts

#### REVIOUS PAGE

2. Diamond and enamel horse and jockey brooch, mounted in white and yellow gold

# ELEGANCE IS THE ONLY BEAUTY THAT NEVER FADES

— AUDREY HEPBURN



#### THIS PAGE

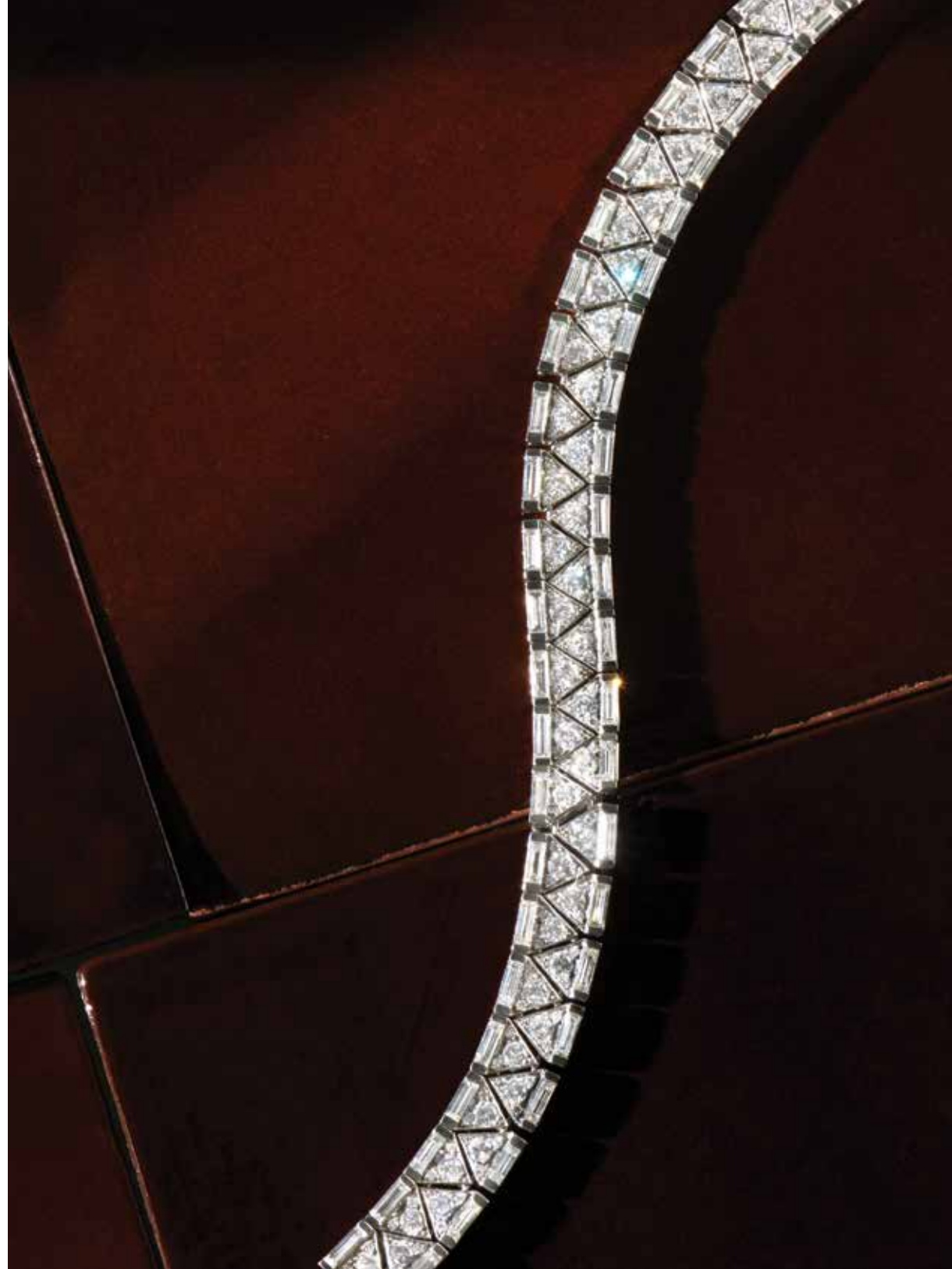
3. Emerald-cut diamond weighing 4.74cts, I colour, VVS2 clarity

4. Brilliant-cut diamond wave design bar brooch

5. Diamond single-stone ring, the emerald-cut diamond weighing 1.98ct, J colour, VVS2 clarity

#### OPPOSITE PAGE

6. Art Deco diamond triangular link trellis bracelet by Cartier Paris, mounted in platinum





**OPPOSITE PAGE**

7. Diamond single-stone ring, the cushion-shaped diamond weighing 3.01cts, D colour, SI1 clarity, mounted in platinum



**THIS PAGE**

8. Art Deco circular and rose-cut diamond openwork clip brooch

9. Pair of old mine-cut diamond openwork ear-pendants with trefoil tops

10. Pair of baguette and brilliant-cut diamond bell-shaped ear-pendants

OPPOSITE PAGE

14. Important  
Georgian old  
mine-cut diamond  
garland necklace,  
mounted in silver



THIS PAGE

11. Pair of rose and  
brilliant-cut diamond  
flowerhead earstuds

12. Diamond floral cluster  
ring, the central diamond  
weighing approx. 1.20ct,  
mounted in platinum,  
French

13. Pair of Art Deco  
old mine-cut diamond  
button cufflinks





**OPPOSITE PAGE**

15. Emerald-cut diamond  
weighing 5.21cts, I colour,  
VVS2 clarity



**THIS PAGE**

16. Sapphire and  
navette and pear-shaped  
diamond bracelet

17. Sapphire and  
diamond three-stone  
ring, the octagonal-cut  
sapphire weighing 2.37cts,  
mounted in platinum

18. Sapphire and  
diamond cocktail ring,  
the cushion-shaped  
sapphire weighing 4.37cts,  
mounted in 18ct white gold

OPPOSITE PAGE

23. Calibré ruby and brilliant-cut diamond crossover cocktail ring, mounted in yellow and white gold, Italian



THIS PAGE

19. Pair of diamond collet earstuds of target design, the old mine-cut diamonds weighing approx. 0.35ct each

20. Art Deco pavé-set brilliant and baguette-cut diamond boule ring

21. Pair of old mine-cut diamond earstuds weighing 1.59ct and 1.49ct, I colour, SI1 and SI2 clarity respectively, mounted in 18ct white gold

22. Art Deco diamond two-stone ring by J. E. Caldwell, the old mine-cut diamonds weighing approx. 1.80ct each, mounted in platinum





OPPOSITE PAGE

24. Pair of old mine-cut and pear-shaped diamond chandelier ear-pendants, mounted in platinum



THIS PAGE

25. Ruby and diamond leaf cluster clip brooch by René Kern, with pair of earclips en suite, mounted in 18ct white gold

26. Burmese ruby and diamond ring, the cushion-shaped ruby weighing 2.37cts, mounted in platinum

27. Ruby and diamond three-stone ring, the oval-shaped ruby weighing approx. 0.90ct, mounted in platinum

OPPOSITE PAGE

32. Victorian old mine-cut diamond graduated pierced panel necklace, mounted in silver and gold



THIS PAGE

28. Victorian old mine-cut diamond swallow brooch with ruby eye, mounted in silver and gold

29. Pair of diamond open lattice-work ear-pendants, mounted in platinum

30. Antique old mine-cut diamond star cluster brooch, mounted in silver and gold

31. Art Deco old mine and baguette-cut diamond octagonal plaque ring, mounted in platinum





**OPPOSITE PAGE**

33. Colombian emerald and Asscher-cut diamond three-stone ring, the square-cut emerald weighing 4.01cts, the diamonds weighing 2.25cts and 1.86ct



**THIS PAGE**

34. Colombian emerald and diamond ring, the step-cut emerald weighing 7.17cts, mounted in platinum and gold

35. Colombian emerald and diamond cluster ring, the oval-cut emerald weighing 4.33cts, mounted in 18ct gold

36. Emerald single-stone ring, the step-cut emerald weighing approx. 0.90ct, with tapered baguette-cut diamond shoulders, mounted in platinum

37. Victorian step-cut emerald five-stone carved half-hoop ring, mounted in gold



**THIS PAGE**

38. Pair of emerald and diamond circular cluster earstuds, mounted in platinum and 18ct gold

39. Antique Colombian emerald and diamond cluster ring, the rectangular-cut emerald weighing approx. 1.00ct, mounted in silver and gold

40. Step-cut emerald and diamond square cluster ring

41. Victorian emerald and diamond carved half-hoop five-stone ring, mounted in gold

**OPPOSITE PAGE**

42. Colombian emerald single-stone ring, the cushion-shaped emerald weighing 5.43cts, with diamond split shoulders to the platinum mount





OPPOSITE PAGE

43. Art Deco  
emerald and diamond  
octagonal panel ring,  
mounted in platinum



THIS PAGE

44. Pair of jade,  
black onyx and diamond  
drop ear-pendants

45. Circular-cut  
emerald and navette and  
baguette-cut diamond  
ballerina cluster ring

46. Emerald and  
diamond twin shield  
cluster ring, mounted in  
platinum, French



**THIS PAGE**

47. Pair of diamond and black onyx box-link ear-pendants, mounted in platinum

48. Edwardian diamond single-stone ring, the collet-set diamond weighing approx. 2.00cts, mounted in platinum

49. Art Deco hexagonal black onyx, old mine-cut diamond and calibré emerald ring, mounted in platinum

50. Pair of brilliant and baguette-cut diamond square panel earclips, mounted in platinum

**OPPOSITE PAGE**

51. Pair of Art Deco vari-cut diamond triangular clip brooches, mounted in platinum





**OPPOSITE PAGE**

52. Pair of Ceylon sapphire and diamond earrings, the cushion-shaped sapphires weighing 4.17cts and 5.16cts



**THIS PAGE**

53. Art Deco old mine-cut diamond and calibré sapphire three-stone ring, mounted in platinum

54. Burmese sapphire and diamond target cluster ring, the circular-cut sapphire weighing 2.37cts, mounted in platinum

55. Ceylon sapphire and diamond target cluster ring, the octagonal sapphire weighing approx. 3.00cts, mounted in platinum

56. Art Deco rectangular and calibré sapphire and baguette and brilliant-cut diamond half-hoop ring

OPPOSITE PAGE

61. Art Deco diamond cocktail ring, the navette-shaped diamond weighing 5.13cts, M colour, SI clarity, within a diamond and calibré sapphire gallery



THIS PAGE

57. Sapphire and navette-cut diamond cluster ring, the circular-cut sapphire weighing approx. 1.75ct

58. Pair of Edwardian diamond pierced wagon wheel earstuds

59. Cushion-shaped sapphire and old mine-cut diamond cluster ring, mounted in gold

60. Diamond single-stone ring, the navette-cut diamond weighing approx. 1.60ct, sapphire shoulders to the platinum mount







**OPPOSITE PAGE**

62. Pair of natural pearl and old mine-cut diamond cluster earstuds, the pearls measuring approx. 8.50 and 8.30mm, mounted in silver and gold



**THIS PAGE**  
63. Georgian rose and old mine-cut diamond St Esprit brooch with pink diamond eye, mounted in silver and gold

64. Natural pearl and rose-cut diamond crossover ring, mounted in platinum

65. Antique old mine-cut diamond star cluster brooch, mounted in silver and gold



OPPOSITE PAGE

70. Art Deco single-cut diamond openwork buckle link bracelet by Cartier London, mounted in platinum



THIS PAGE

66. Diamond single-stone pendant in halo surround, the brilliant-cut diamond weighing approx. 0.50ct, mounted in 18ct white gold

67. Edwardian diamond mesh coin purse with calibré ruby frame and gold chain suspension

68. Old mine-cut diamond and calibré ruby pendant cross, mounted in platinum and gold

69. Antique pavé-set diamond pendant cross, mounted in platinum





**OPPOSITE PAGE**

71. Highly important pair of antique natural pearl and diamond drop earrings, the pearls measuring 12.2-12.9 x 21.0-22.0mm



**THIS PAGE**

72. Old mine-cut diamond bow necklet

73. Old mine-cut diamond cluster ring, the central diamond weighing 2.05cts, E colour, IF clarity, mounted in platinum

74. Cushion-shaped diamond three-stone ring, the central diamond weighing approx. 1.80ct, the shoulders weighing approx. 0.75ct each, mounted in platinum

75. Old mine-cut diamond openwork trefoil cluster ring, mounted in gold and platinum, French

OPPOSITE PAGE

80. Art Deco calibre  
ruby and old mine-cut  
diamond Greek Key  
openwork bracelet,  
mounted in platinum  
and gold, French



THIS PAGE

76. Victorian red guilloché  
enamel and diamond heart  
pendant, mounted in gold

77. Edwardian red  
spinel and diamond target  
cluster ring, mounted  
in platinum and gold

78. Edwardian diamond,  
ruby and gold cricket bat  
and wicket pendant

79. Rose-cut diamond  
fox mask ring with ruby eyes,  
mounted in silver and gold





OPPOSITE PAGE

81. Edwardian old mine and pear-shaped diamond cascade pendant with ribbon bow top, mounted in silver and gold



THIS PAGE

82. Antique cabochon garnet trefoil locket pendant with diamond detail, mounted in gold

83. Mid-19th century garnet bracelet with a pair of cluster earrings en suite, mounted in all gold

# THOU ART THE FAIREST AND MOST PRECIOUS JEWEL...

— SHAKESPEARE, SONNET 131



#### THIS PAGE

84. Pair of old mine-cut diamond earstuds weighing 0.39ct and 0.37ct, mounted in platinum

85. Old mine-cut diamond pendant cross with calibr  sapphire detail



#### OPPOSITE PAGE

86. Victorian amethyst drop pendant overlaid with an entwined diamond snake, mounted in silver and gold





OPPOSITE PAGE

87. Aquamarine single-stone ring, the rectangular-cut aquamarine weighing approx. 11.00cts, with stepped baguette-cut diamond shoulders



THIS PAGE

88. Aquamarine, diamond and black enamel pendant, the oval aquamarine weighing approx. 25.00cts, mounted in platinum

89. Rectangular morganite and diamond cluster ring with black onyx detail

90. Aquamarine cocktail ring with ruby shoulders, the step-cut aquamarine weighing approx. 20.00cts, mounted in platinum

OPPOSITE PAGE

95. Textured 18ct gold  
railway track bracelet,  
French



THIS PAGE

91. Pair of antique  
pink topaz tear-drop  
ear-pendants,  
mounted in gold

92. Pink topaz and  
diamond three-stone ring,  
the circular-cut topaz  
weighing approx. 2.25cts,  
mounted in gold

93. Pink sapphire and old  
mine-cut diamond cluster  
ring, mounted in gold

94. Antique cushion-  
shaped pink tourmaline  
and rose-cut diamond  
cluster ring, mounted  
in platinum and gold







OPPOSITE PAGE

96. Citrine and diamond rectangular panel ring, mounted in platinum and gold



THIS PAGE

97. Victorian cabochon garnet and gold ropework bracelet with locket drop

98. 18ct gold flattened curb link watch chain, with T-bar pendant, 16"

99. Pair of diamond and gold lioness earclips by Carrera y Carrera



**OPPOSITE PAGE**

*103. Victorian old mine-cut diamond sunburst cluster brooch, mounted in silver and gold*

**THIS PAGE**

*100. Victorian half-pearl and diamond star cluster necklace, mounted in gold*

*101. Pair of old mine-cut diamond single-stone earstuds, the diamonds weighing 0.85ct in total, mounted in 18ct yellow gold*

*102. Edwardian natural pearl and old mine-cut diamond scroll and collet ring, mounted in gold*





OPPOSITE PAGE

104. Pair of impressive antique old mine-cut and pear-shaped diamond chandelier ear-pendants, mounted in silver and gold



THIS PAGE

105. Old mine-cut diamond flowerhead cluster ring, mounted in gold, French

106. 18ct yellow gold and pavé-set diamond leaf motif necklace

107. Antique diamond five-stone half-hoop ring, mounted in gold

**OPPOSITE PAGE**

111. Diamond single-stone ring, the cushion-shaped diamond weighing 1.51ct, K colour, SI1 clarity, mounted in 18ct rose gold



**THIS PAGE**

108. Pair of cultured pearl and diamond flowerhead earclips, mounted in all gold

109. Textured gold ribbed open link necklace, 16"

110. 18ct three-colour gold Russian wedding bangle





OPPOSITE PAGE

112. Natural pearl and old mine-cut diamond cluster pendant, the pearl measuring approx. 6.60mm, mounted in silver and gold



THIS PAGE

113. Pair of antique old mine-cut diamond flowerhead cluster earstuds, mounted in silver and gold

114. Late 19th century rose-cut diamond and seed pearl open circle brooch, mounted in silver and gold

115. Edwardian pearl and old mine-cut diamond twin hoop ring, mounted in gold

116. Early Victorian old mine-cut diamond rose brooch, mounted in silver and gold

117. Victorian half-pearl five-stone half-hoop ring with rose-cut diamond points, mounted in gold

OPPOSITE PAGE

122. Fine antique old mine-cut diamond cluster bracelet, mounted in silver and gold, the central diamonds each weighing approx. 2.50cts



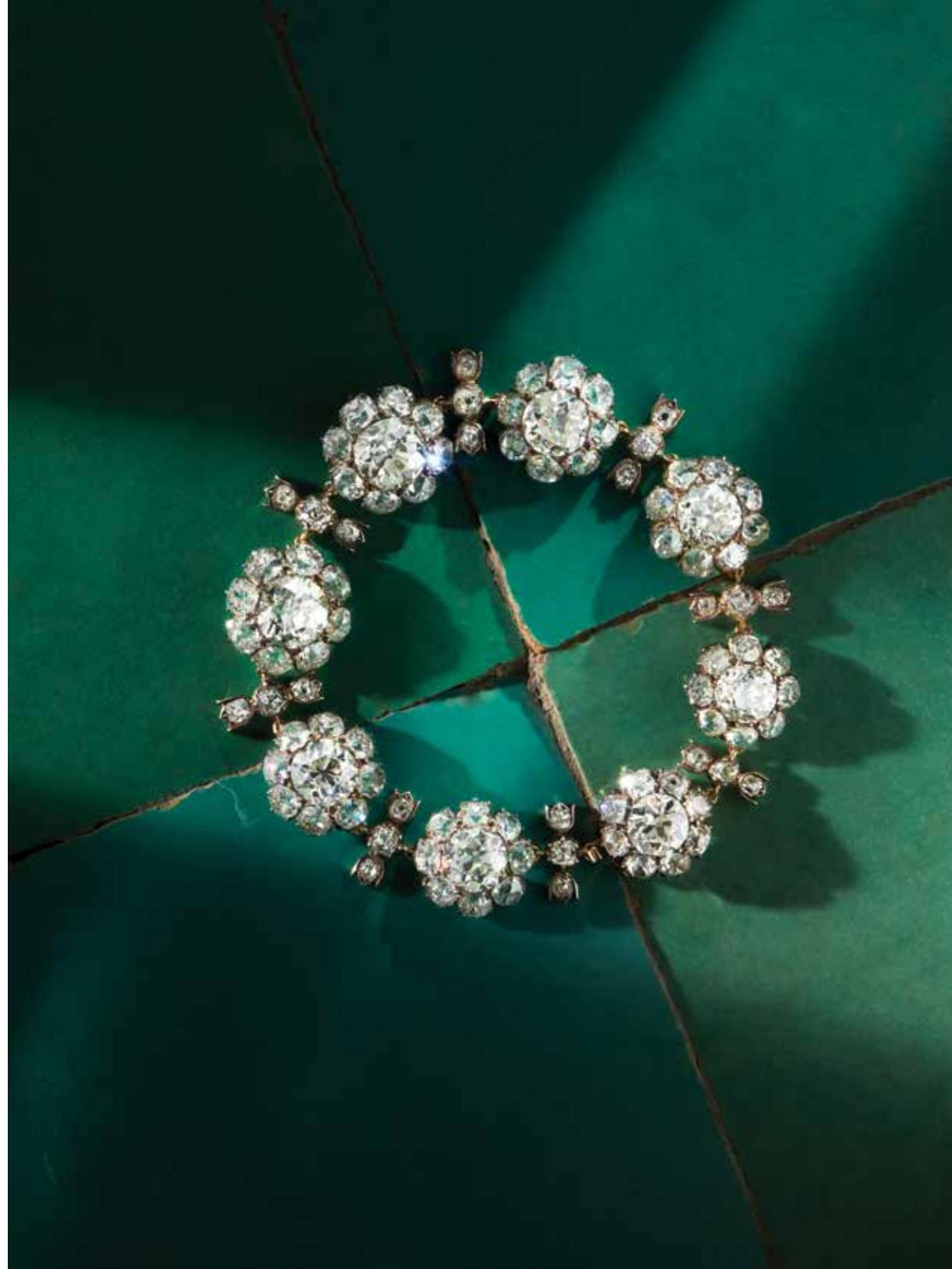
THIS PAGE

118. Old mine-cut diamond circular cluster ring, mounted in silver and gold

119. Georgian old mine-cut diamond circular button ring, mounted in silver and gold

120. Victorian old mine-cut diamond eight-stone cluster ring, mounted in silver and gold

121. Antique old mine-cut diamond scrolled openwork pendant, mounted in silver and gold





**OPPOSITE PAGE**

123. Antique diamond three-stone ring, the central cushion-shaped diamond weighing 2.37cts, I colour, SI1 clarity, the two pear-shaped diamonds weighing 1.25 and 1.21cts, J colour, SI2 and I1 clarity respectively, mounted in silver and gold



**THIS PAGE**

124. Gold and brilliant-cut diamond knotted ribbon brooch
125. 18ct gold wirework cockerel clip brooch by Chaumet with sapphire eye
126. 18ct gold bird brooch by Boucheron with ruby eye

OPPOSITE PAGE

130. Oval peridot  
and 18ct textured yellow  
gold floral bangle



THIS PAGE

127. Peridot and diamond  
circular rosette pendant,  
mounted in 15ct yellow gold,  
with pearl-set neckchain

128. Edwardian green  
tourmaline and diamond  
circular cluster ring,  
mounted in silver and gold

129. Peridot and rose-cut  
diamond flowerhead brooch  
pendant, mounted in gold







**OPPOSITE PAGE**  
131. Pair of peridot and old mine-cut diamond girandole ear-pendants, mounted in blackened silver and gold



**THIS PAGE**  
132. Victorian turquoise and diamond oval cluster ring, mounted in gold  
133. Edwardian peridot, pearl and pink topaz trellis-work necklace, mounted in 15ct gold  
134. Art Nouveau, blue guilloché enamel, diamond and gold circular locket necklace



**THIS PAGE**

135. Belle Epoque kite-shaped citrine, pearl and enamel pendant, mounted in gold

136. Antique cushion-shaped yellow and white zircon sunburst cluster pendant, mounted in silver and gold

137. Antique rose-cut diamond, blister pearl and red enamel cock and hen bar brooch, mounted in silver and gold, Russian

138. Victorian amethyst and diamond oval cluster brooch, mounted in silver and gold



**OPPOSITE PAGE**

139. Exquisite Georgian diamond, enamel and gem-set heart-shaped clip brooch, mounted in silver and gold





**OPPOSITE PAGE**  
 140. Pair of Ceylon sapphire and diamond ear-pendants, the cushion-shaped sapphires weighing 6.20cts and 5.73cts, mounted in silver and gold



**THIS PAGE**  
 141. Antique old mine-cut diamond pendant cross, mounted in silver and gold  
 142. Victorian gold octagonal locket with diamond scrolled detail, reverse monogrammed 'ET', gold box-link necklace  
 143. Victorian gold, emerald and diamond bombe locket pendant with ropework border on gold snake-pattern necklace

OPPOSITE PAGE

148. Antique Ceylon sapphire and old mine-cut diamond pendant, the oval sapphire weighing 7.20cts, mounted in silver and gold



THIS PAGE

144. Victorian amethyst and diamond heart pendant with ribbon bow top, mounted in silver and gold

145. Pair of circular-cut sapphire and diamond hexafoil cluster earstuds, mounted in 9ct gold

146. Cushion-shaped sapphire and old mine-cut diamond eternity ring, mounted in gold

147. Pair of faceted amethyst chainlink cufflinks, mounted in gold





OPPOSITE PAGE

149. 18ct yellow gold  
curb chain necklace,  
Italian, 18"



THIS PAGE

- 150. 14ct gold openwork  
oval link chain, 23"
- 151. 9ct gold curb link  
watch chain, 17"
- 152. 9ct gold nautical  
link necklace, 15"
- 153. Pair of 18ct yellow  
gold entwined 'C' motif  
hoop earrings by Cartier

OPPOSITE PAGE

158. 18ct gold tank  
track bracelet, French



THIS PAGE

154. 14ct gold flexible  
brick pattern bracelet

155. 18ct rose and yellow  
gold buckle bracelet

156. 18ct gold 'Maillon  
Panthère' bracelet by Cartier

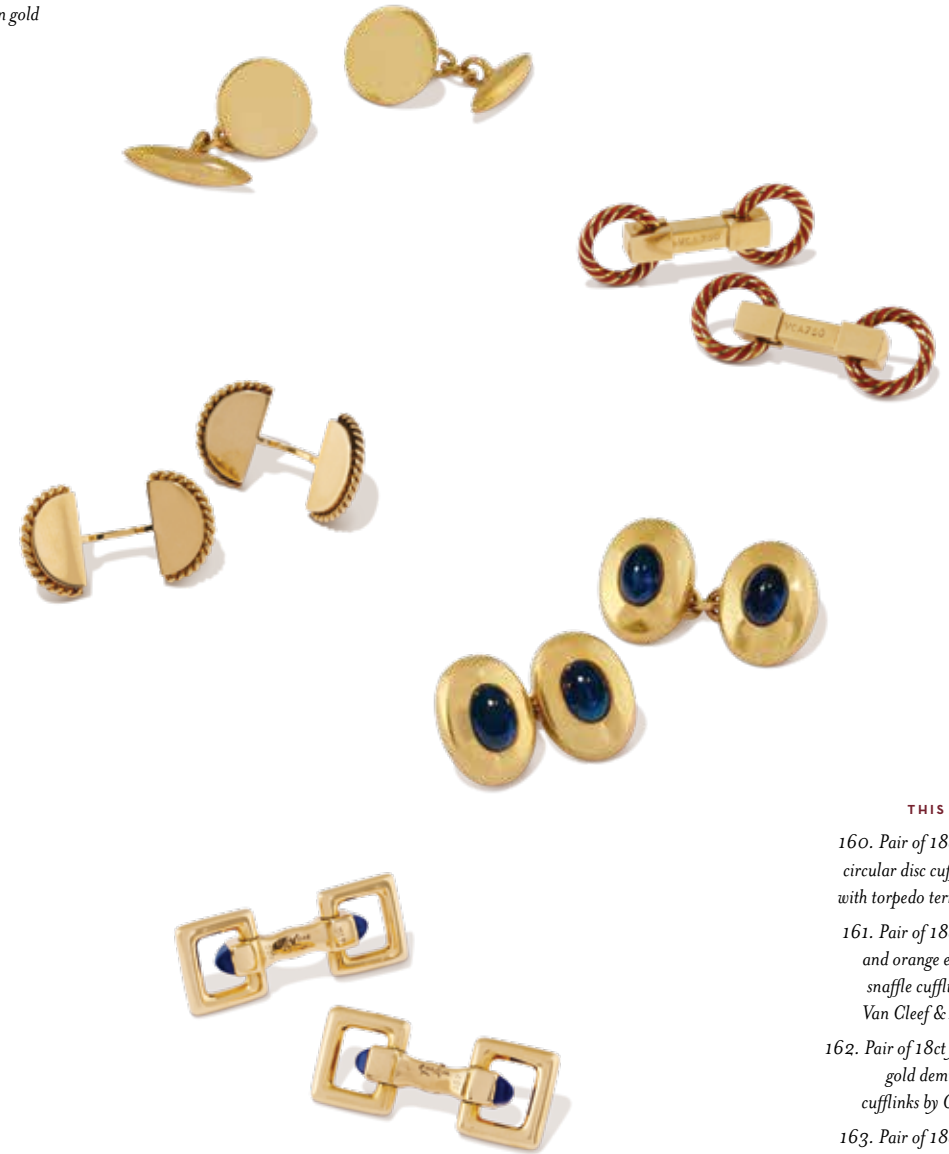
157. Lady's 18ct gold  
cocktail watch by Cartier





OPPOSITE PAGE

159. Victorian ruby and diamond oval cluster ring, the cushion-shaped ruby weighing 1.10ct, mounted in gold



THIS PAGE

160. Pair of 18ct gold circular disc cufflinks, with torpedo terminals

161. Pair of 18ct gold and orange enamel snaffle cufflinks by Van Cleef & Arpels

162. Pair of 18ct yellow gold demi-lune cufflinks by Cartier

163. Pair of 18ct gold and cabochon sapphire oval cufflinks

164. Pair of 18ct gold stirrup cufflinks by Cartier with lapis lazuli points

BACK COVER

169. Pair of contemporary 18ct gold and mother-of-pearl star earclips



THIS PAGE

165. Pair of Victorian 18ct gold and enamel oval cufflinks depicting the vices of women, gambling and drink

166. Victorian Essex crystal reverse intaglio steeple-chase stickpin, mounted in gold

167. Old mine-cut diamond seven-stone circular cluster stickpin

168. Pair of Edwardian 18ct gold and enamel fox mask cufflinks

ART DIRECTION - PRISCILLE NEEFS | CREATIVE IMAGERY LEO BIEBER | PHOTOGRAPHY PRUDENCE CUMING



WITH GRATEFUL THANKS TO RETROUVIUS FOR SUPPLYING OUR BACKGROUNDS





HUMPHREY BUTLER LTD

40/41 PALL MALL, LONDON SW1Y 5JG

+44 (0)20 7839 3193 - [HUMPHREY@HUMPHREYBUTLER.COM](mailto:HUMPHREY@HUMPHREYBUTLER.COM)

[HUMPHREYBUTLER.COM](http://HUMPHREYBUTLER.COM)